

CURVES

C3600 R3

Lineshaft and Submersible Turbine Pump Curves

3600 RPM CURVES - 60 CYCLE PERFORMANCE

 **GOULDS**
WATER TECHNOLOGY
a xylem brand

INDEX – 60 CYCLE PERFORMANCE – 3600 RPM

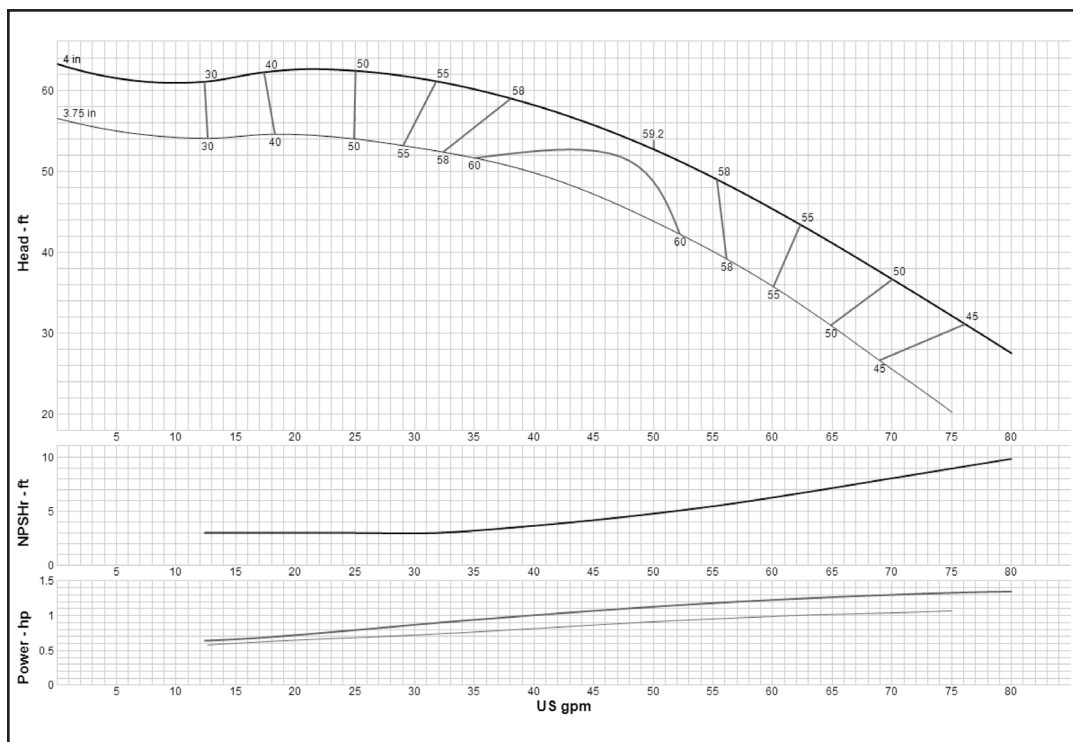
Model	RPM	Curve Number	Date Issued
5ALC	3550	E6205ACPC1	September 1, 2017
5CHC	3550	E6205CCPC2	July 1, 2014
5CLC	3550	E6205CFPC2	July 1, 2014
5RWAHC	3550	E6205WCPC2	September 1, 2017
5RWALC	3550	E6205WDPC2	July 1, 2014
5THC	3550	E6205TFPC1	July 1, 2014
5TLC	3550	E6205TEPC0	July 1, 2014
6CHC	3550	E6206CCPC2	September 1, 2017
6CLC	3550	E6206CFPC2	September 1, 2017
6DHHC	3550	E6206DCPCO	July 1, 2014
6DHHO	3550	E6206DDPC2	July 1, 2014
6DHLC	3550	E6206DEPCO	July 1, 2014
6DHLO	3550	E6206DFPC1	July 1, 2014
6RAHC	3550	E6206AAPC4	September 1, 2017
6RALC	3550	E6206ACPC4	September 1, 2017
7CHC	3550	E6207CCPC2	September 1, 2017
7CHO	3550	E6207CHPC0	July 1, 2014
7CLC	3550	E6207CFPC1	September 1, 2017
7CLO	3550	E6207CJPC0	July 1, 2014
7RAHC	3550	E6207RAPC1	September 1, 2017
7RALC	3550	E6207RBPC1	July 1, 2014
7THC	3550	E6207TFPC2	July 1, 2014
7TLC	3550	E6207TAPC2	July 1, 2014
7WAHC	3550	E6207WAPC1	September 1, 2017
7WALC	3550	E6207WBPCO	September 1, 2017
8FDHC	3550	E6208FDPC0	July 1, 2014
8FDHO	3550	E6208FEPC0	July 1, 2014
8FDLC	3550	E6208FFPC0	July 1, 2014
8FDLO	3550	E6208FGPC0	July 1, 2014
8RAHC	3550	E6208AAPC7	July 1, 2014
8RALC	3550	E6208ACPC5	July 1, 2014
8RJHC	3550	E6208RCPCO	July 1, 2014
8RJHO	3550	E6208RDPC1	July 1, 2014
8RJLC	3550	E6208REPC1	September 1, 2017
8RJLO	3550	E6208RFPC1	July 1, 2014
9RCHC	3550	E6209CCPC2	September 1, 2017
9RCHO	3550	E6409CHPC1	July 1, 2014
9RCLC	3550	E6209CFPC2	July 1, 2014
9RCLO	3550	E6409CJPC1	July 1, 2014
9THC	3550	E6209TEPC2	July 1, 2014
9TLC	3550	E6209TAPC2	July 1, 2014

INDEX – 60 CYCLE PERFORMANCE – 3600 RPM

Model	RPM	Curve Number	Date Issued
9WAHC	3550	E6209WAPCO	September 1, 2017
9WALC	3550	E6209WBPCO	July 1, 2014
10RAHC	3550	E6210RAPC1	September 1, 2017
10RAHXC	3550	E6210ABPC2	July 1, 2014
10RALC	3550	E6210RBPC1	September 1, 2017
10RJHC	3550	E6410RCPC1	September 1, 2017
10RJLC	3550	E6210REPC1	September 1, 2017
10RJLO	3550	E6210RFPC1	July 1, 2014
10RJMC	3550	E6210RGPC1	July 1, 2014
10RJMO	3550	E6210RHPC1	July 1, 2014
10WAHC	3550	E6210WAPC1	July 1, 2014
10WALC	3550	E6210WBPC2	July 1, 2014
11CLC	3550	E6211CFPC1	September 1, 2017
11CLO	3550	E6411CJPCO	July 1, 2014
11RAHC	3550	E6211RAPC1	July 1, 2014
11RAHXC	3550	E6211ABPC2	July 1, 2014
11RALC	3550	E6211RBPC1	July 1, 2014
11WAHC	3550	E6211WAPCO	July 1, 2014
11WALC	3550	E6211WBPCO	July 1, 2014
12WAHC	3550	E60412WAPCO	July 1, 2014
12WALC	3550	E60412WBPCO	July 1, 2014
13RAHC	3550	E6213RAPC1	July 1, 2014
13RAHXC	3550	E6213ABPC2	July 1, 2014
13RALC	3550	E6213RBPC1	July 1, 2014

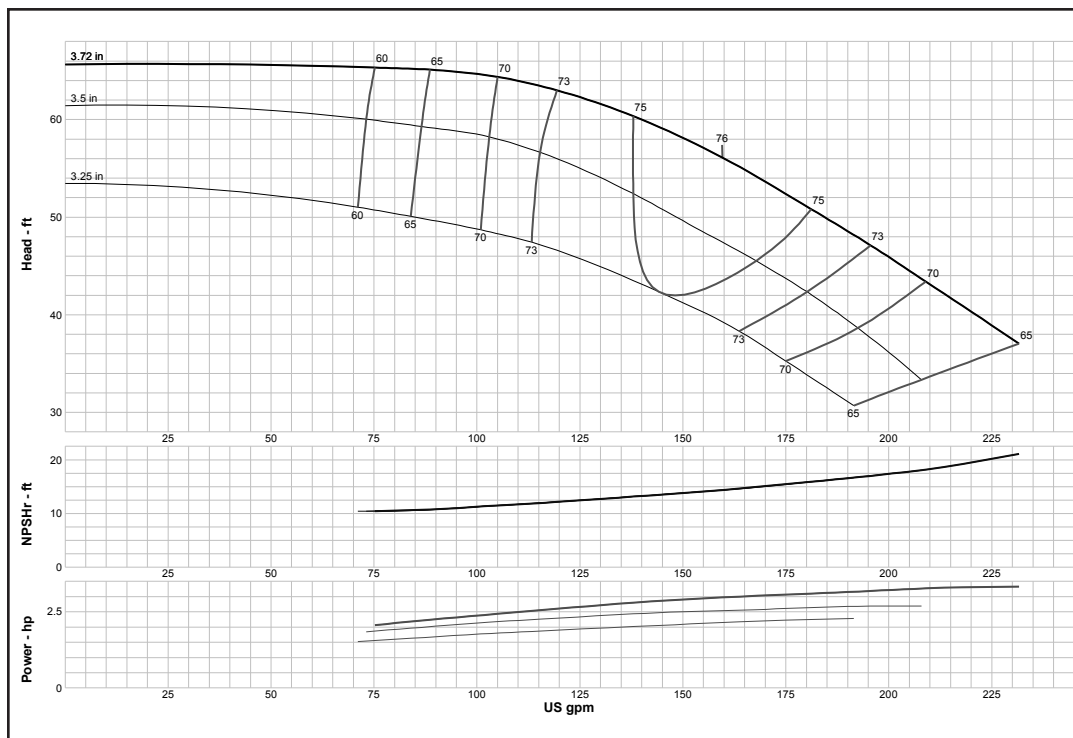
Turbine

MODEL 5ALC (Effective September 1, 2017)



Curve No. E6205ACPC1	
Model	5ALC
RPM	3550
EFFICIENCY CORRECTION	
1-STAGE	-4
2-STAGE	-3
3-STAGE	-1.5
4-STAGE	0
Impeller	ENCLOSED
Ns =	2187
K =	1.3
Bowl O. D.	5.20 in
Bowl Lateral	0.25
Max. PSI	480
Disch size	3", 4"
TURBINE OPERATIONS	
Lubbock, Texas	
BOWL PERFORMANCE CURVE BASED ON PUMPING CLEAR, NON-AERATED WATER. RATED POINT ONLY IS GUARANTEED. CURVES REPRESENT SINGLE STAGE PERFORMANCE BASED ON TEST OF MULTI-STAGE BOWL ASSEMBLY. EFFICIENCY CORRECTION APPLIES TO HEAD, FLOW AND HORSEPOWER FOR LESSER STAGES.	

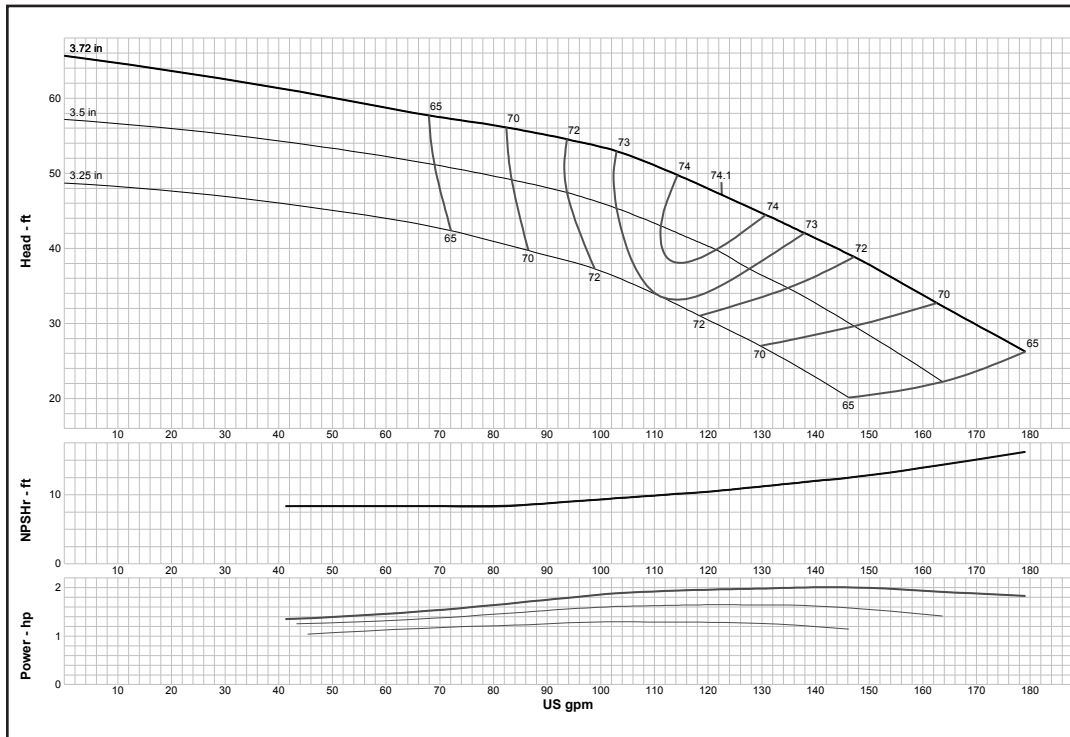
MODEL 5CHC (Effective July 1, 2014)



Curve No. E6205CCPC2	
Model	5CHC
RPM	3550
EFFICIENCY CORRECTION	
1-STAGE	-4
2-STAGE	-3
3-STAGE	-1.5
4-STAGE	0
Impeller	ENCLOSED
Ns =	2187
K =	1.3
Bowl O. D.	5.20 in
Bowl Lateral	0.25
Max. PSI	480
Disch size	3", 4"
TURBINE OPERATIONS	
Lubbock, Texas	
BOWL PERFORMANCE CURVE BASED ON PUMPING CLEAR, NON-AERATED WATER. RATED POINT ONLY IS GUARANTEED. CURVES REPRESENT SINGLE STAGE PERFORMANCE BASED ON TEST OF MULTI-STAGE BOWL ASSEMBLY. EFFICIENCY CORRECTION APPLIES TO HEAD, FLOW AND HORSEPOWER FOR LESSER STAGES.	

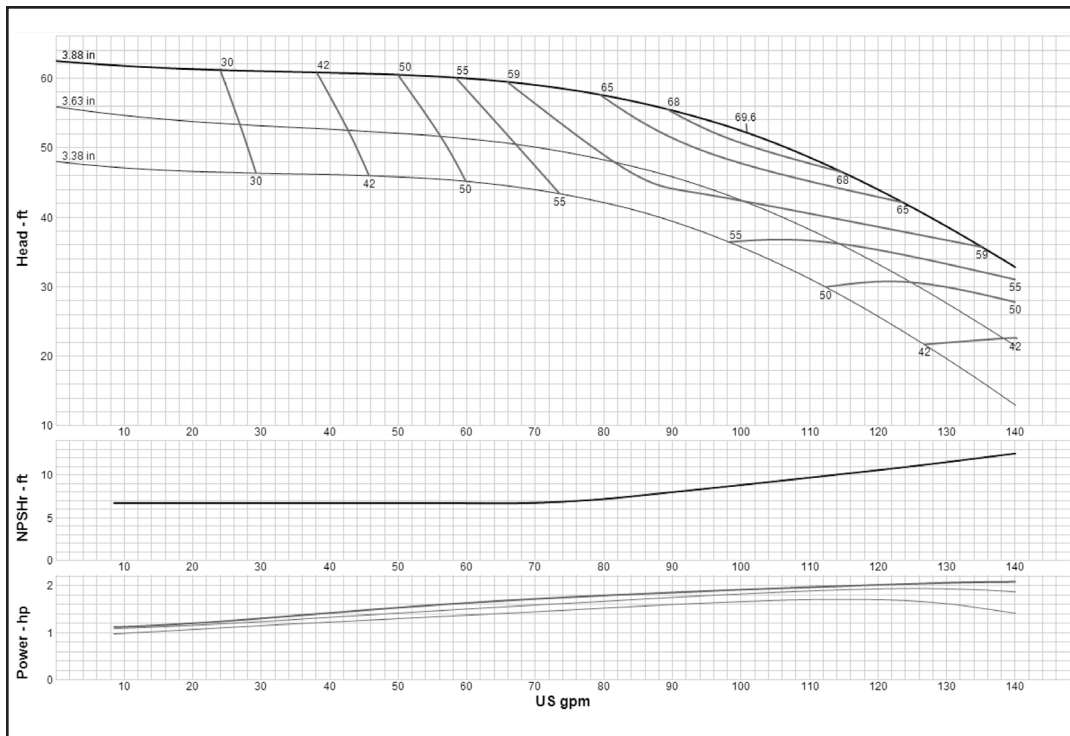
Turbine

MODEL 5CLC (Effective July 1, 2014)



Curve No. E6205CFPC2	
Model	5CLC
RPM	3550
EFFICIENCY CORRECTION	
1-STAGE	-4
2-STAGE	-3
3-STAGE	-1.5
4-STAGE	0
Impeller	ENCLOSED
Ns =	2184
K =	1.4
Bowl O. D.	5.20 in
Bowl Lateral	0.25
Max. PSI	480
Disch size	3", 4"
TURBINE OPERATIONS	
Lubbock, Texas	
BOWL PERFORMANCE CURVE BASED ON PUMPING CLEAR, NON-AERATED WATER. RATED POINT ONLY IS GUARANTEED. CURVES REPRESENT SINGLE STAGE PERFORMANCE BASED ON TEST OF MULTI-STAGE BOWL ASSEMBLY. EFFICIENCY CORRECTION APPLIES TO HEAD, FLOW AND HORSEPOWER FOR LESSER STAGES.	

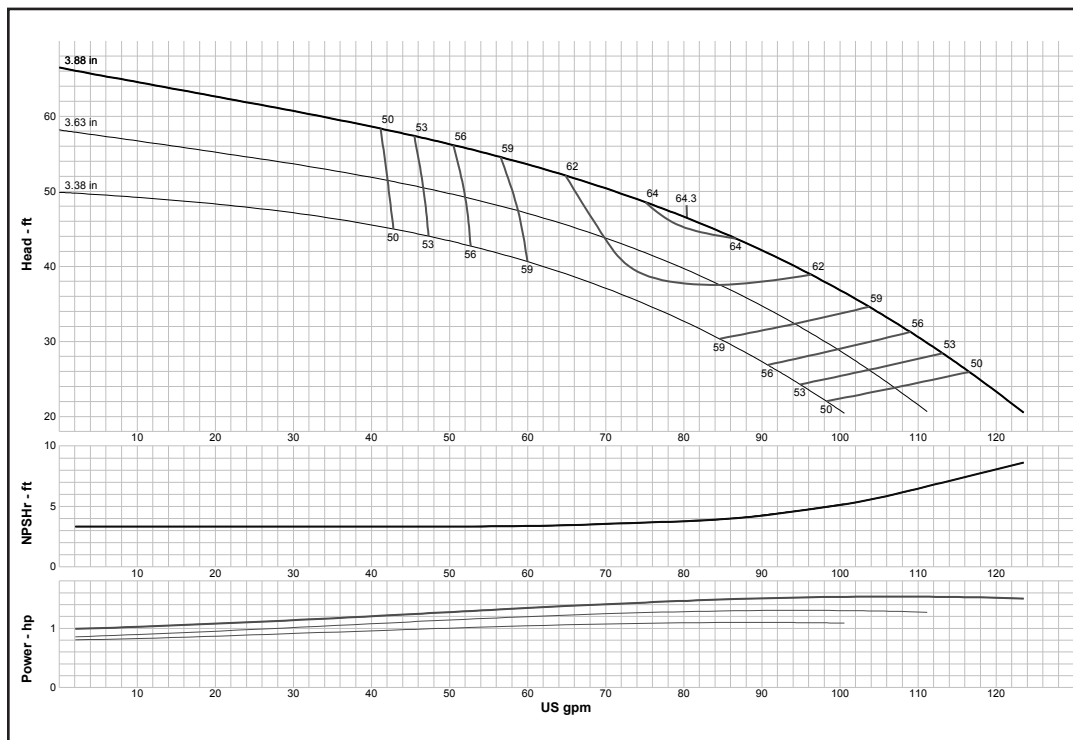
MODEL 5RWAHC (Effective September 1, 2017)



Curve No. E6205WCPC2	
Model	5RWAHC
RPM	3550
EFFICIENCY CORRECTION	
1-STAGE	-4
2-STAGE	-2
3-STAGE	-1
4-STAGE	0
Impeller	ENCLOSED
Ns =	1810
K =	1.3
Bowl O. D.	5.20 in
Bowl Lateral	0.5
Max. PSI	480
Disch size	3", 4"
TURBINE OPERATIONS	
Lubbock, Texas	
BOWL PERFORMANCE CURVE BASED ON PUMPING CLEAR, NON-AERATED WATER. RATED POINT ONLY IS GUARANTEED. CURVES REPRESENT SINGLE STAGE PERFORMANCE BASED ON TEST OF MULTI-STAGE BOWL ASSEMBLY. EFFICIENCY CORRECTION APPLIES TO HEAD, FLOW AND HORSEPOWER FOR LESSER STAGES.	

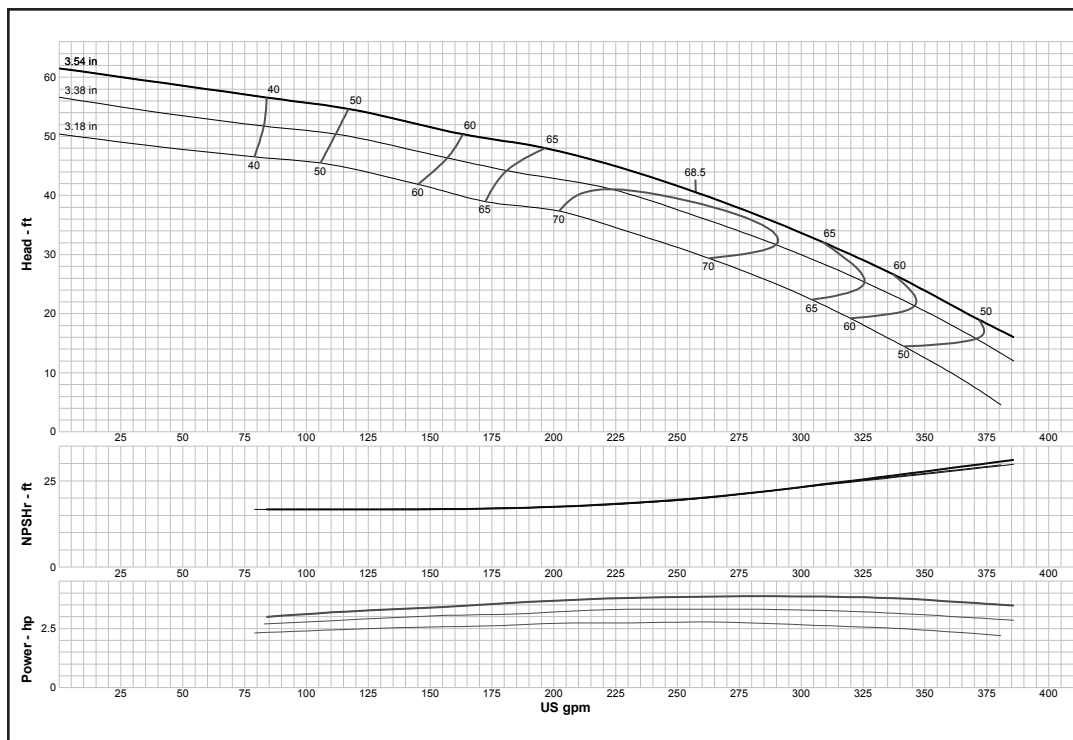
Turbine

MODEL 5RWALC (Effective July 1, 2014)



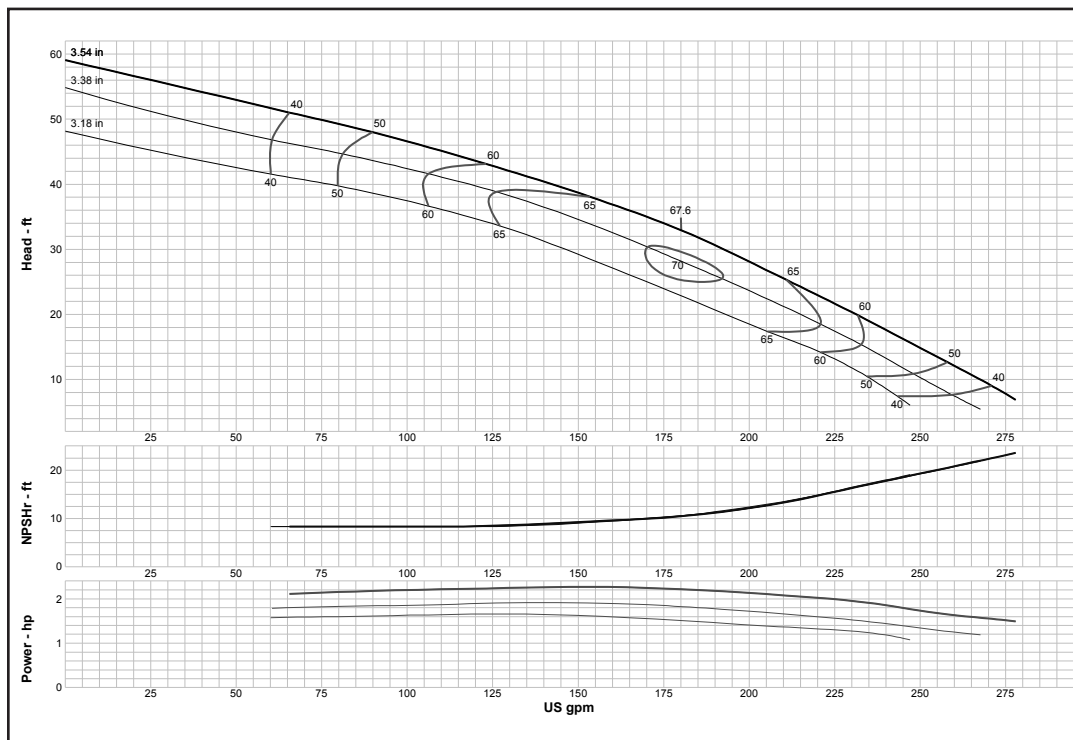
Curve No. E6205WDPC2	
Model	5RWALC
RPM	3550
EFFICIENCY CORRECTION	
1-STAGE	-4
2-STAGE	-2
3-STAGE	-1
4-STAGE	0
Impeller	ENCLOSED
Ns =	2000
K =	1.3
Bowl O. D.	5.20 in
Bowl Lateral	0.5
Max. PSI	480
Disch size	3", 4"
TURBINE OPERATIONS	
Lubbock, Texas	
BOWL PERFORMANCE CURVE BASED ON PUMPING CLEAR, NON-AERATED WATER. RATED POINT ONLY IS GUARANTEED. CURVES REPRESENT SINGLE STAGE PERFORMANCE BASED ON TEST OF MULTI-STAGE BOWL ASSEMBLY. EFFICIENCY CORRECTION APPLIES TO HEAD, FLOW AND HORSEPOWER FOR LESSER STAGES.	

MODEL 5THC (Effective July 1, 2014)



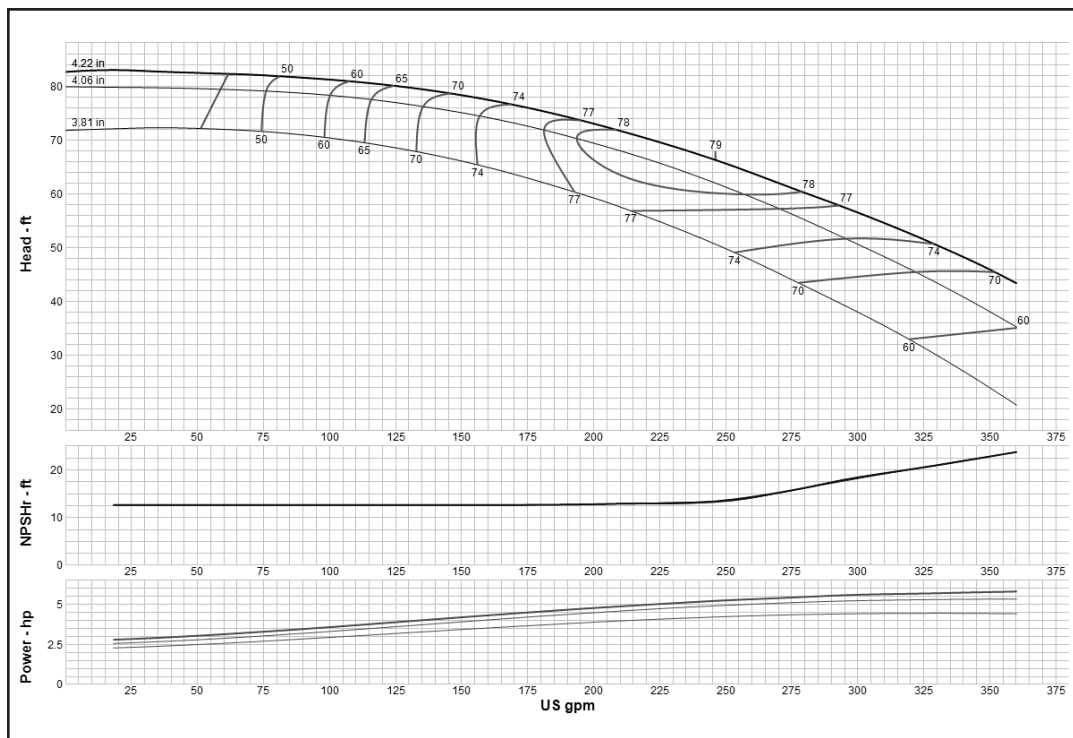
Curve No. E6205TFPC1	
Model	5THC
RPM	3550
EFFICIENCY CORRECTION	
1-STAGE	-3
2-STAGE	-2
3-STAGE	-1
4-STAGE	0
Impeller	ENCLOSED
Ns =	3395
K =	2.36
Bowl O. D.	5.20 in
Bowl Lateral	0.25
Max. PSI	480
Disch size	3", 4"
TURBINE OPERATIONS	
Lubbock, Texas	
BOWL PERFORMANCE CURVE BASED ON PUMPING CLEAR, NON-AERATED WATER. RATED POINT ONLY IS GUARANTEED. CURVES REPRESENT SINGLE STAGE PERFORMANCE BASED ON TEST OF MULTI-STAGE BOWL ASSEMBLY. EFFICIENCY CORRECTION APPLIES TO HEAD, FLOW AND HORSEPOWER FOR LESSER STAGES.	

MODEL 5TLC (Effective July 1, 2014)



Curve No. E6205TEPC0	
Model	5TLC
RPM	3550
EFFICIENCY CORRECTION	
1-STAGE	-3
2-STAGE	-2
3-STAGE	-0.5
4-STAGE	0
Impeller	ENCLOSED
Ns =	3314
K =	2.36
Bowl O. D.	5.20 in
Bowl Lateral	0.25
Max. PSI	480
Disch size	3", 4"
TURBINE OPERATIONS	
Lubbock, Texas	
BOWL PERFORMANCE CURVE BASED ON PUMPING CLEAR, NON-AERATED WATER. RATED POINT ONLY IS GUARANTEED. CURVES REPRESENT SINGLE STAGE PERFORMANCE BASED ON TEST OF MULTI-STAGE BOWL ASSEMBLY. EFFICIENCY CORRECTION APPLIES TO HEAD, FLOW AND HORSEPOWER FOR LESSER STAGES.	

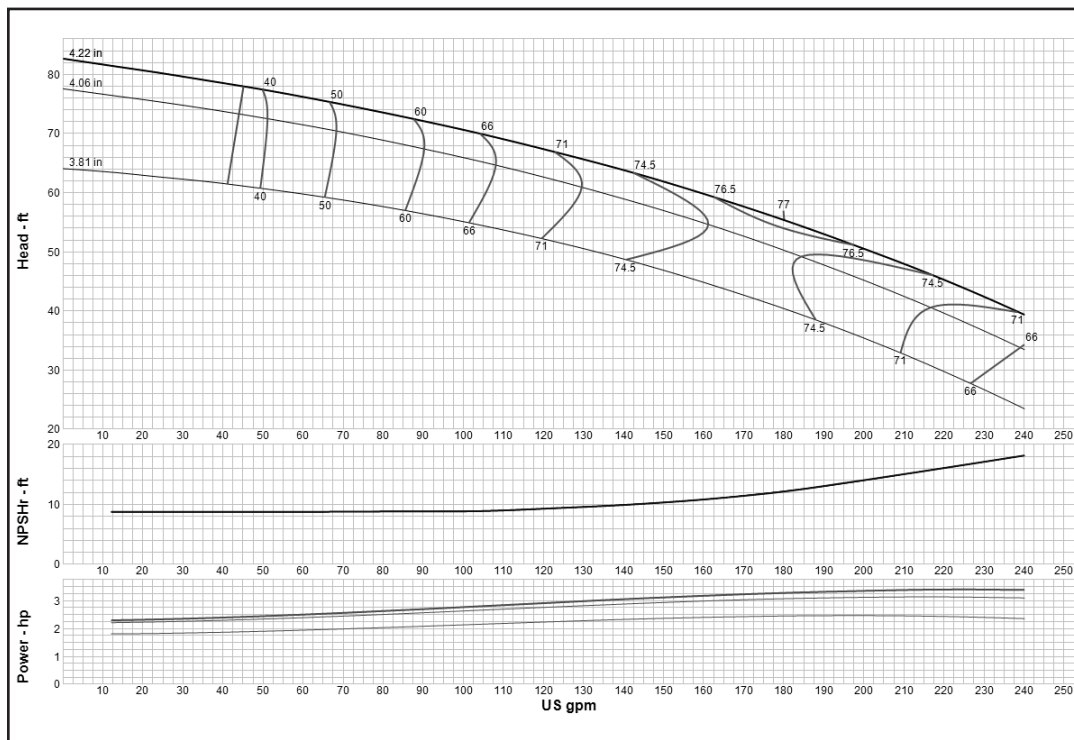
MODEL 6CHC (Effective September 1, 2017)



Curve No. E6206CCPC2	
Model	6CHC
RPM	3550
EFFICIENCY CORRECTION	
1-STAGE	-3
2-STAGE	-2
3-STAGE	-0.5
4-STAGE	0
Impeller	ENCLOSED
Ns =	2340
K =	2.1
Bowl O. D.	5.88 in
Bowl Lateral	0.25
Max. PSI	420
Disch size	3", 4"
TURBINE OPERATIONS	
Lubbock, Texas	
BOWL PERFORMANCE CURVE BASED ON PUMPING CLEAR, NON-AERATED WATER. RATED POINT ONLY IS GUARANTEED. CURVES REPRESENT SINGLE STAGE PERFORMANCE BASED ON TEST OF MULTI-STAGE BOWL ASSEMBLY. EFFICIENCY CORRECTION APPLIES TO HEAD, FLOW AND HORSEPOWER FOR LESSER STAGES.	

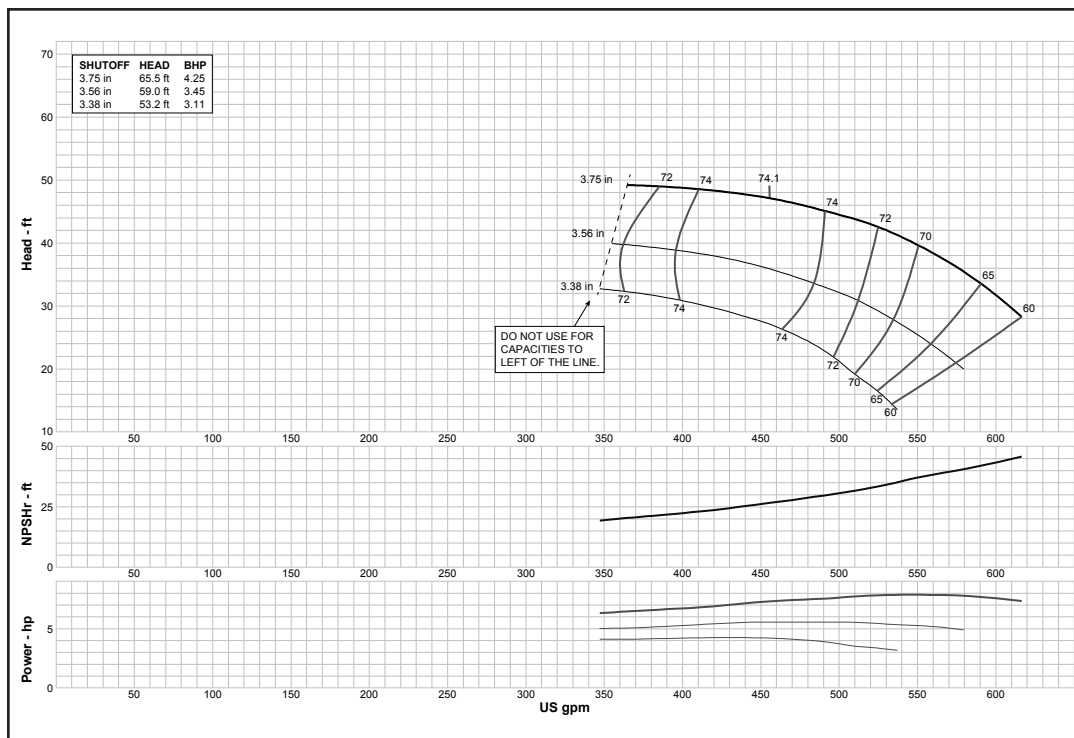
Turbine

MODEL 6CLC (Effective September 1, 2017)



Curve No. E6206CFPC2	
Model	6CLC
RPM	3550
EFFICIENCY CORRECTION	
1-STAGE	-3
2-STAGE	-2
3-STAGE	-0.5
4-STAGE	0
Impeller	ENCLOSED
Ns =	2292
K =	2.1
Bowl O. D.	5.88 in
Bowl Lateral	0.25
Max. PSI	420
Disch size	3", 4"
TURBINE OPERATIONS	
Lubbock, Texas	
BOWL PERFORMANCE CURVE BASED ON PUMPING CLEAR, NON-AERATED WATER. RATED POINT ONLY IS GUARANTEED. CURVES REPRESENT SINGLE STAGE PERFORMANCE BASED ON TEST OF MULTI-STAGE BOWL ASSEMBLY. EFFICIENCY CORRECTION APPLIES TO HEAD, FLOW AND HORSEPOWER FOR LESSER STAGES.	

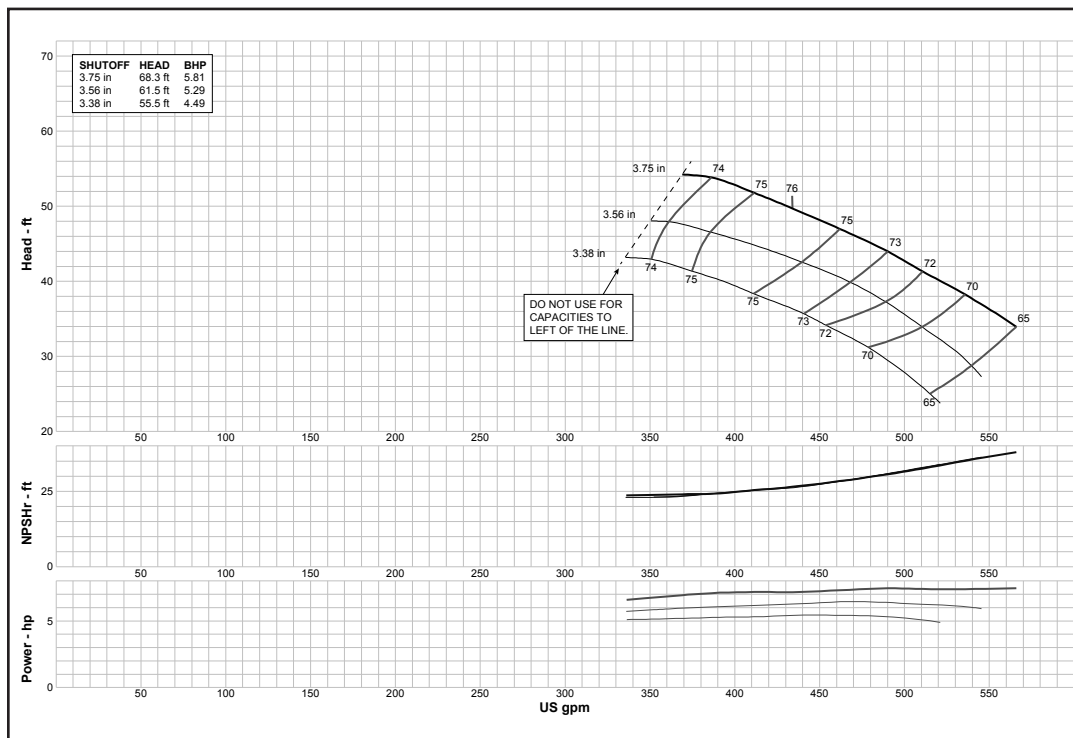
MODEL 6DHHC (Effective July 1, 2014)



Curve No. E6206DCPCO	
Model	6DHHC
RPM	3550
EFFICIENCY CORRECTION	
1-STAGE	-3
2-STAGE	-2
3-STAGE	-0.5
4-STAGE	0
Impeller	ENCLOSED
Ns =	3950
K =	5.6
Bowl O. D.	5.50 in
Bowl Lateral	0.56
Max. PSI	200
Disch size	3", 4"
TURBINE OPERATIONS	
Lubbock, Texas	
BOWL PERFORMANCE CURVE BASED ON PUMPING CLEAR, NON-AERATED WATER. RATED POINT ONLY IS GUARANTEED. CURVES REPRESENT SINGLE STAGE PERFORMANCE BASED ON TEST OF MULTI-STAGE BOWL ASSEMBLY. EFFICIENCY CORRECTION APPLIES TO HEAD, FLOW AND HORSEPOWER FOR LESSER STAGES.	

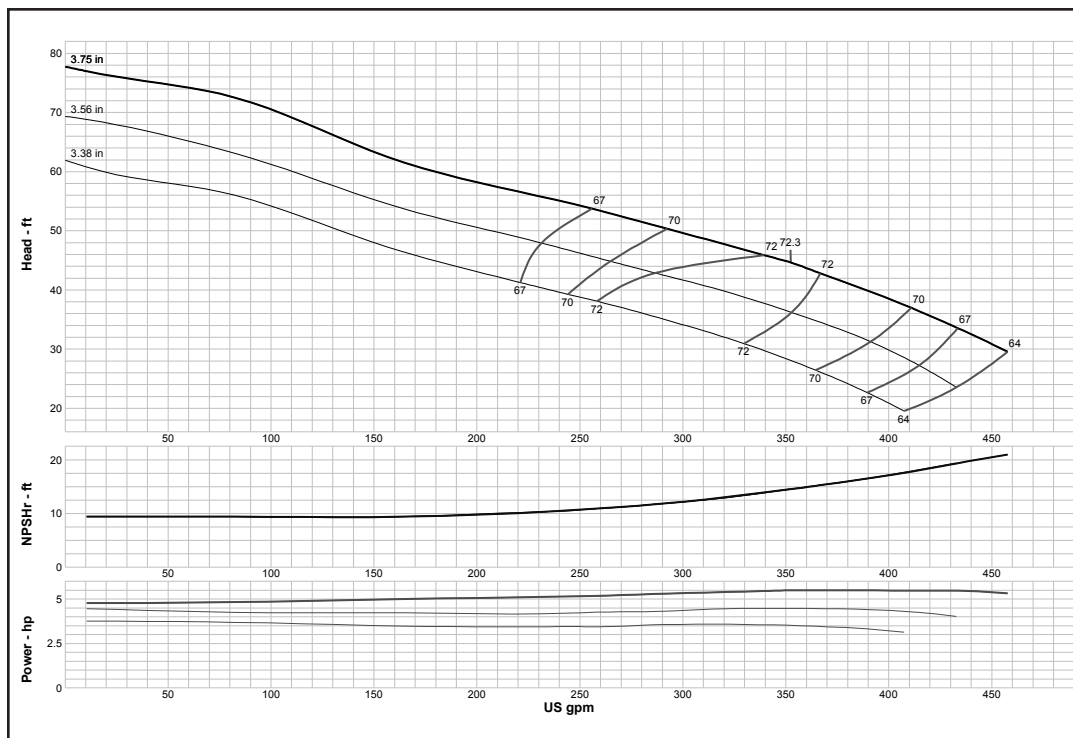
Turbine

MODEL 6DHHO (Effective July 1, 2014)



Curve No. E6206DDPC2	
Model	6DHHO
RPM	3550
EFFICIENCY CORRECTION	
1-STAGE	-3
2-STAGE	-2
3-STAGE	-1
4-STAGE	0
Impeller	OPEN
Ns =	3950
K =	5.6
Bowl O. D.	5.50 in
Bowl Lateral	0.56
Max. PSI	200
Disch size	3", 4"
TURBINE OPERATIONS	
Lubbock, Texas	
BOWL PERFORMANCE CURVE BASED ON PUMPING CLEAR, NON-AERATED WATER. RATED POINT ONLY IS GUARANTEED. CURVES REPRESENT SINGLE STAGE PERFORMANCE BASED ON TEST OF MULTI-STAGE BOWL ASSEMBLY. EFFICIENCY CORRECTION APPLIES TO HEAD, FLOW AND HORSEPOWER FOR LESSER STAGES.	

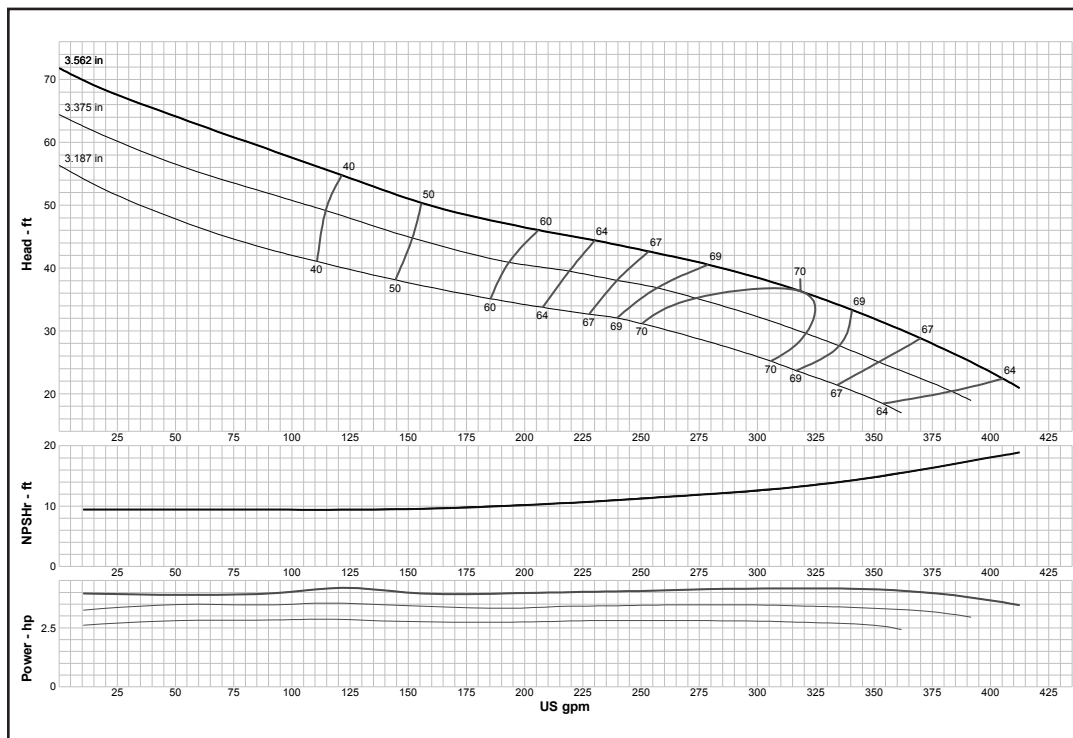
MODEL 6DHLC (Effective July 1, 2014)



Curve No. E6206DEPCO	
Model	6DHLC
RPM	3550
EFFICIENCY CORRECTION	
1-STAGE	-3
2-STAGE	-2
3-STAGE	-0.5
4-STAGE	0
Impeller	ENCLOSED
Ns =	4280
K =	5.6
Bowl O. D.	5.50 in
Bowl Lateral	0.56
Max. PSI	200
Disch size	3", 4"
TURBINE OPERATIONS	
Lubbock, Texas	
BOWL PERFORMANCE CURVE BASED ON PUMPING CLEAR, NON-AERATED WATER. RATED POINT ONLY IS GUARANTEED. CURVES REPRESENT SINGLE STAGE PERFORMANCE BASED ON TEST OF MULTI-STAGE BOWL ASSEMBLY. EFFICIENCY CORRECTION APPLIES TO HEAD, FLOW AND HORSEPOWER FOR LESSER STAGES.	

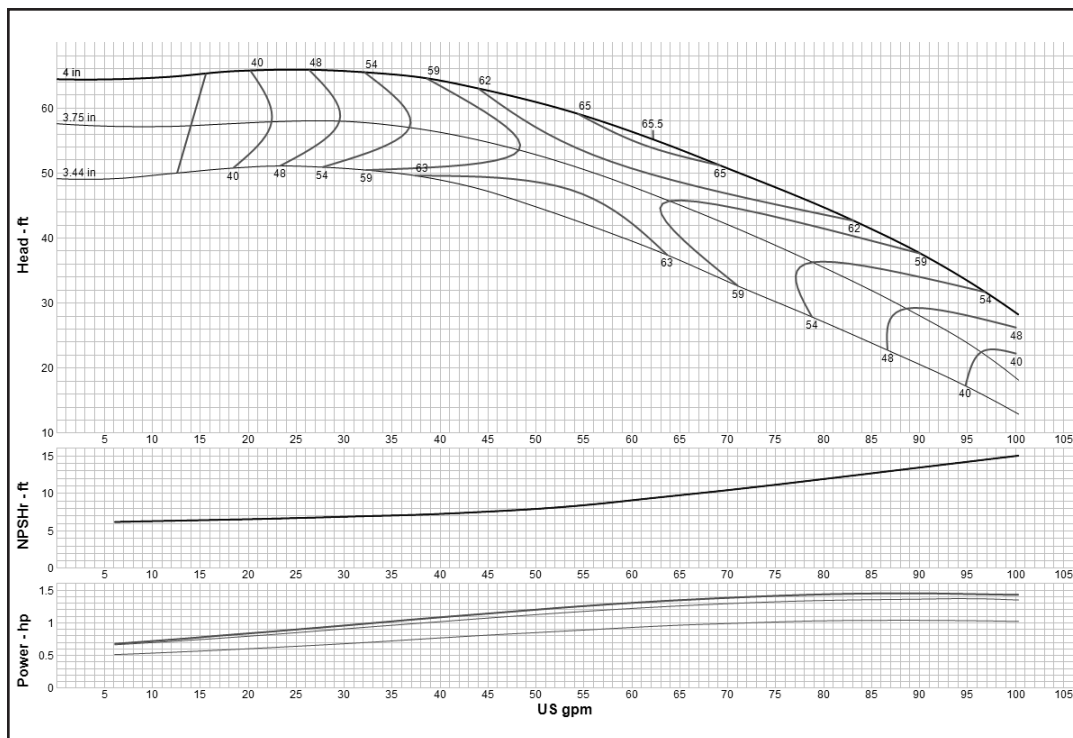
Turbine

MODEL 6DHLO (Effective July 1, 2014)



Curve No. E6206DFPC1	
Model	6DHLO
RPM	3550
EFFICIENCY CORRECTION	
1-STAGE	-3
2-STAGE	-2
3-STAGE	-1
4-STAGE	0
Impeller	OPEN
Ns =	4280
K =	5.6
Bowl O. D.	5.50 in
Bowl Lateral	0.56
Max. PSI	200
Disch size	3", 4"
TURBINE OPERATIONS	
Lubbock, Texas	
BOWL PERFORMANCE CURVE BASED ON PUMPING CLEAR, NON-AERATED WATER. RATED POINT ONLY IS GUARANTEED. CURVES REPRESENT SINGLE STAGE PERFORMANCE BASED ON TEST OF MULTI-STAGE BOWL ASSEMBLY. EFFICIENCY CORRECTION APPLIES TO HEAD, FLOW AND HORSEPOWER FOR LESSER STAGES.	

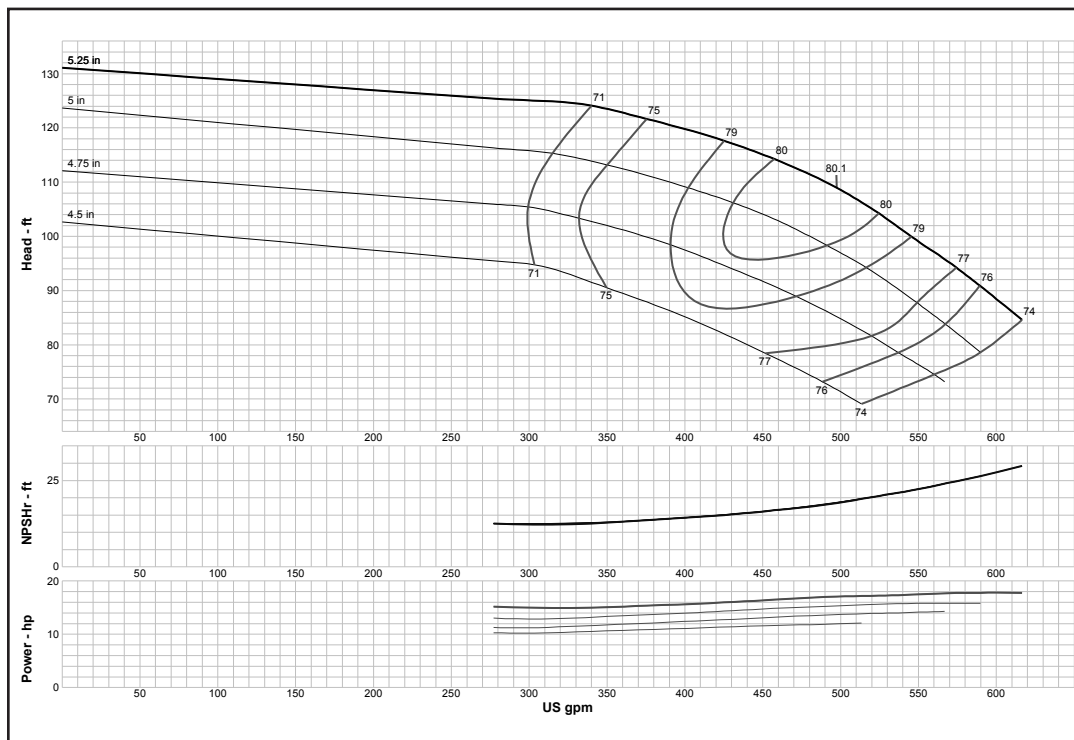
MODEL 6RAHC (Effective September 1, 2017)



Curve No. E6206AAPC4	
Model	6RAHC
RPM	3550
EFFICIENCY CORRECTION	
1-STAGE	-4
2-STAGE	-2
3-STAGE	-1
4-STAGE	0
Impeller	ENCLOSED
Ns =	1450
K =	1.18
Bowl O. D.	5.50 in
Bowl Lateral	0.25
Max. PSI	430
Disch size	3", 4"
TURBINE OPERATIONS	
Lubbock, Texas	
BOWL PERFORMANCE CURVE BASED ON PUMPING CLEAR, NON-AERATED WATER. RATED POINT ONLY IS GUARANTEED. CURVES REPRESENT SINGLE STAGE PERFORMANCE BASED ON TEST OF MULTI-STAGE BOWL ASSEMBLY. EFFICIENCY CORRECTION APPLIES TO HEAD, FLOW AND HORSEPOWER FOR LESSER STAGES.	

Turbine

MODEL 7CHO (Effective July 1, 2014)



Curve No. E6207CHPC0

Model 7CHO

RPM 3550

EFFICIENCY CORRECTION

1-STAGE	-2
2-STAGE	-1
3-STAGE	-0.5
4-STAGE	0

Impeller **OPEN**

Ns = **2300**

K = **3.8**

Bowl O. D. 7.13 in

Bowl Lateral 0.5

Max. PSI 415

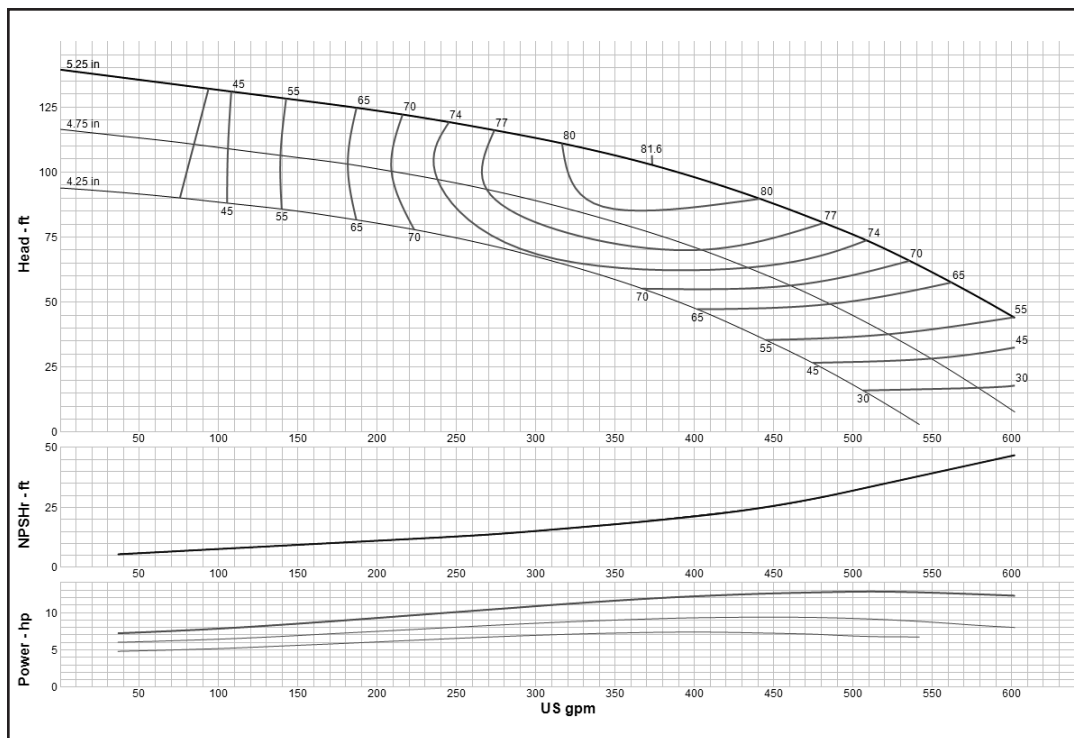
Disch size 4", 5", 6"

TURBINE OPERATIONS

Lubbock, Texas

BOWL PERFORMANCE CURVE BASED ON PUMPING CLEAR, NON-AERATED WATER. RATED POINT ONLY IS GUARANTEED. CURVES REPRESENT SINGLE STAGE PERFORMANCE BASED ON TEST OF MULTI-STAGE BOWL ASSEMBLY. EFFICIENCY CORRECTION APPLIES TO HEAD, FLOW AND HORSEPOWER FOR LESSER STAGES.

MODEL 7CLC (Effective September 1, 2017)



Curve No. E6207CFPC1

Model 7CLC

RPM 3550

EFFICIENCY CORRECTION

1-STAGE	-3
2-STAGE	-1
3-STAGE	0
4-STAGE	0

Impeller **ENCLOSED**

Ns = **2422**

K = **3.5**

Bowl O. D. 7.13 in

Bowl Lateral 0.5

Max. PSI 415

Disch size 4", 5", 6"

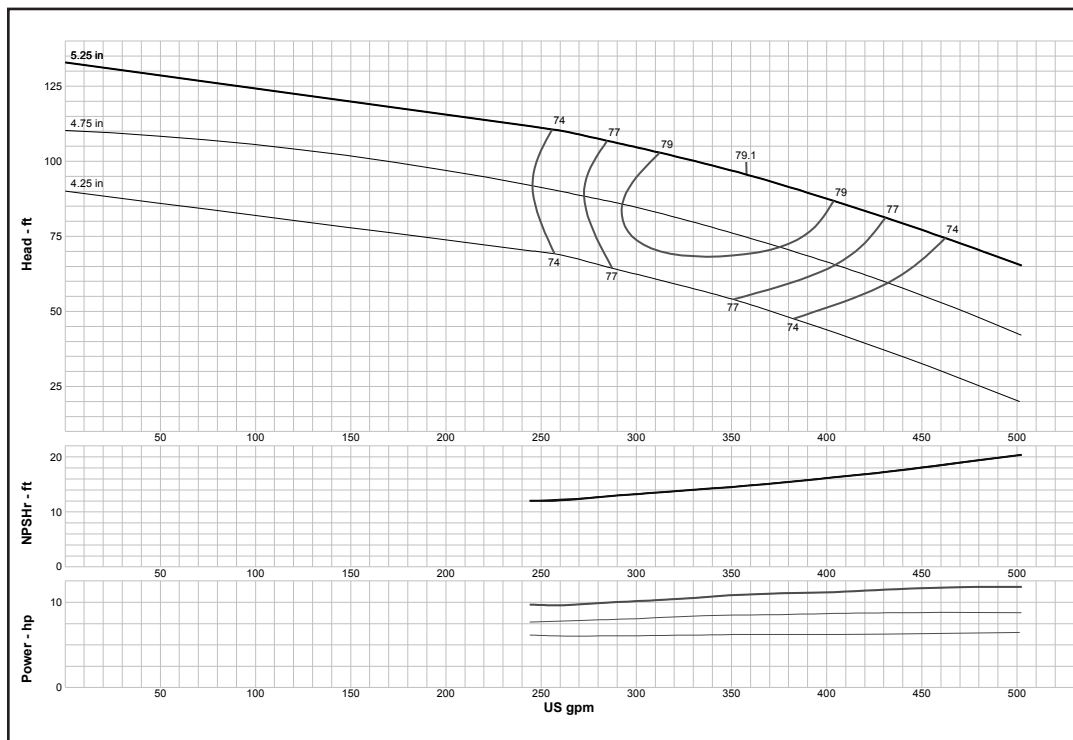
TURBINE OPERATIONS

Lubbock, Texas

BOWL PERFORMANCE CURVE BASED ON PUMPING CLEAR, NON-AERATED WATER. RATED POINT ONLY IS GUARANTEED. CURVES REPRESENT SINGLE STAGE PERFORMANCE BASED ON TEST OF MULTI-STAGE BOWL ASSEMBLY. EFFICIENCY CORRECTION APPLIES TO HEAD, FLOW AND HORSEPOWER FOR LESSER STAGES.

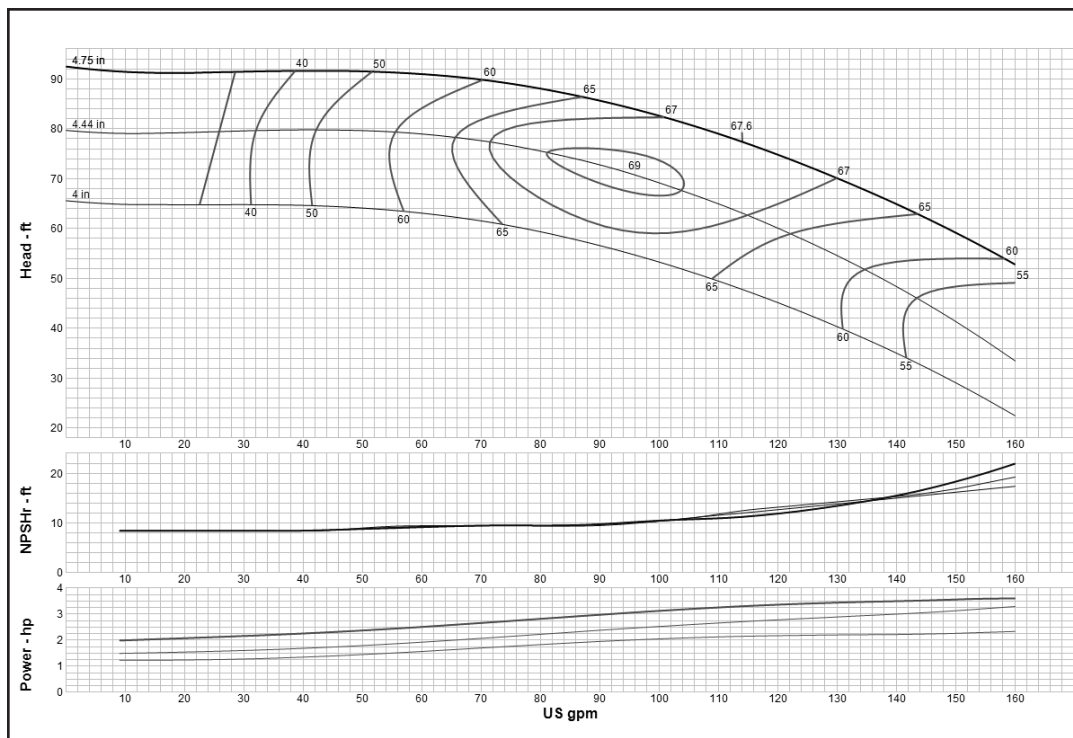
Turbine

MODEL 7CLO (Effective July 1, 2014)



Curve No. E6207CJPC0	
Model	7CLO
RPM	3550
EFFICIENCY CORRECTION	
1-STAGE	-2
2-STAGE	-1
3-STAGE	-0.5
4-STAGE	0
Impeller	OPEN
Ns =	2160
K =	3.8
Bowl O. D.	7.13 in
Bowl Lateral	0.5
Max. PSI	415
Disch size	4", 5", 6"
TURBINE OPERATIONS	
Lubbock, Texas	
BOWL PERFORMANCE CURVE BASED ON PUMPING CLEAR, NON-AERATED WATER. RATED POINT ONLY IS GUARANTEED. CURVES REPRESENT SINGLE STAGE PERFORMANCE BASED ON TEST OF MULTI-STAGE BOWL ASSEMBLY. EFFICIENCY CORRECTION APPLIES TO HEAD, FLOW AND HORSEPOWER FOR LESSER STAGES.	

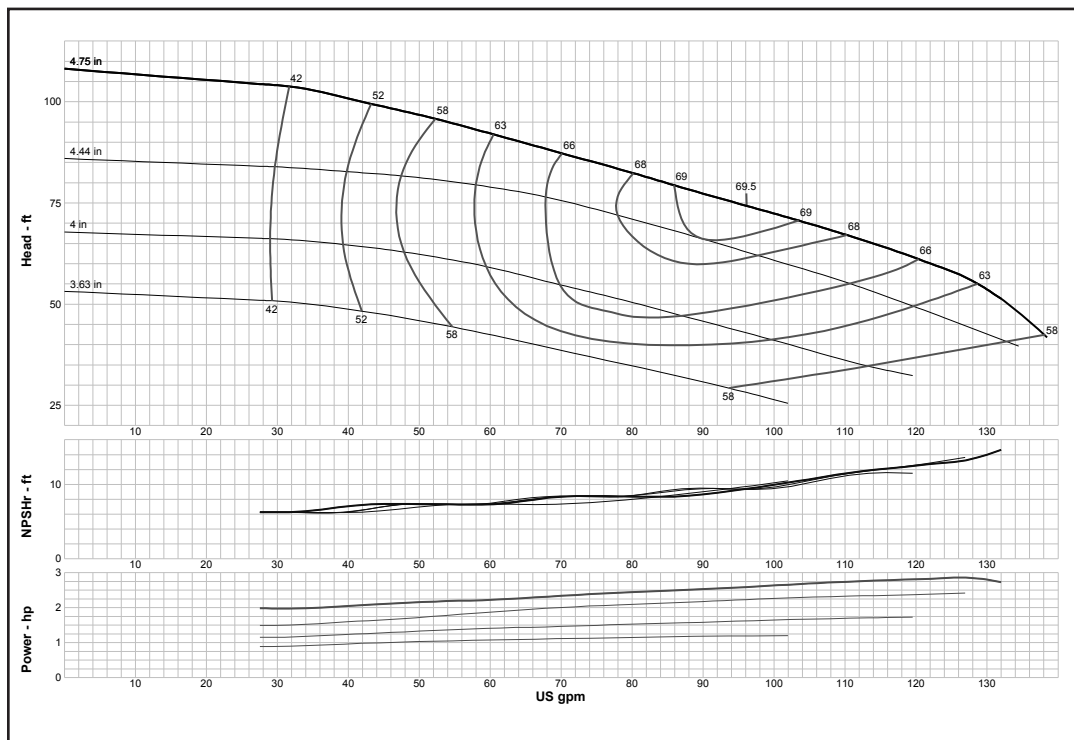
MODEL 7RAHC (Effective September 1, 2017)



Curve No. E6207RAPC1	
Model	7RAHC
RPM	3550
EFFICIENCY CORRECTION	
1-STAGE	-4
2-STAGE	-2
3-STAGE	-1
4-STAGE	0
Impeller	ENCLOSED
Ns =	1290
K =	1.61
Bowl O. D.	7.50 in
Bowl Lateral	0.25
Max. PSI	430
Disch size	3", 4"
TURBINE OPERATIONS	
Lubbock, Texas	
BOWL PERFORMANCE CURVE BASED ON PUMPING CLEAR, NON-AERATED WATER. RATED POINT ONLY IS GUARANTEED. CURVES REPRESENT SINGLE STAGE PERFORMANCE BASED ON TEST OF MULTI-STAGE BOWL ASSEMBLY. EFFICIENCY CORRECTION APPLIES TO HEAD, FLOW AND HORSEPOWER FOR LESSER STAGES.	

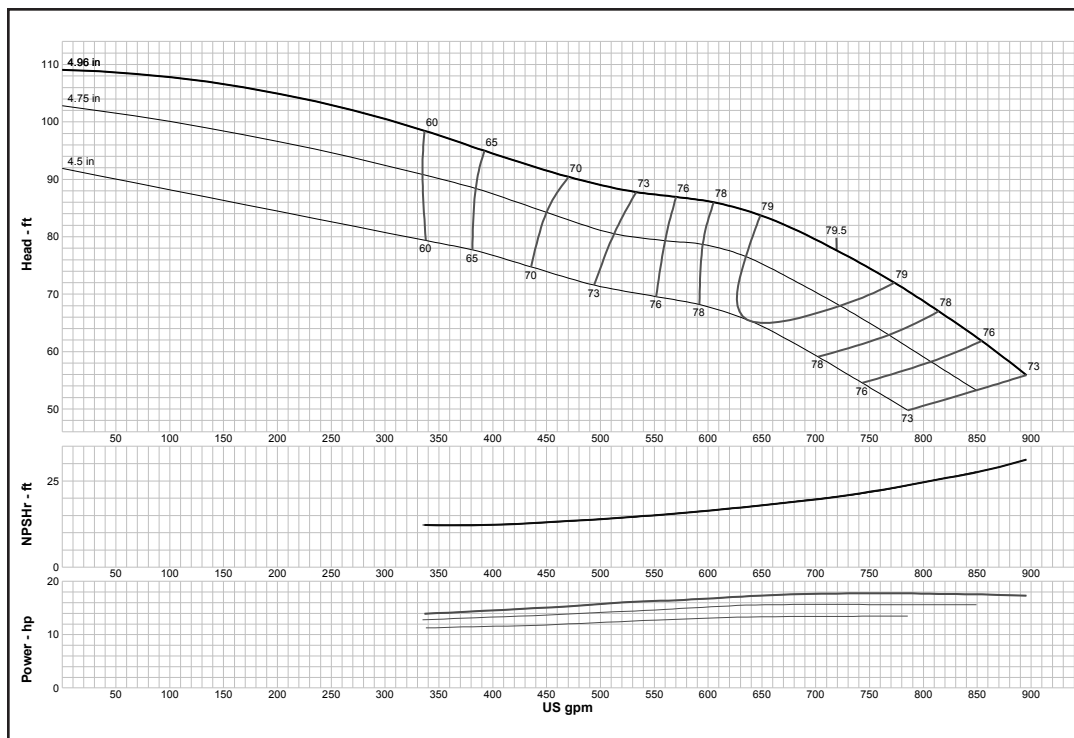
Turbine

MODEL 7RALC (Effective July 1, 2014)



Curve No. E6207RBPC1	
Model	7RALC
RPM	3550
EFFICIENCY CORRECTION	
1-STAGE	-4
2-STAGE	-2
3-STAGE	-1
4-STAGE	0
Impeller	ENCLOSED
Ns =	1325
K =	1.61
Bowl O. D.	7.50 in
Bowl Lateral	0.25
Max. PSI	430
Disch size	3", 4"
TURBINE OPERATIONS	
Lubbock, Texas	
BOWL PERFORMANCE CURVE BASED ON PUMPING CLEAR, NON-AERATED WATER. RATED POINT ONLY IS GUARANTEED. CURVES REPRESENT SINGLE STAGE PERFORMANCE BASED ON TEST OF MULTI-STAGE BOWL ASSEMBLY. EFFICIENCY CORRECTION APPLIES TO HEAD, FLOW AND HORSEPOWER FOR LESSER STAGES.	

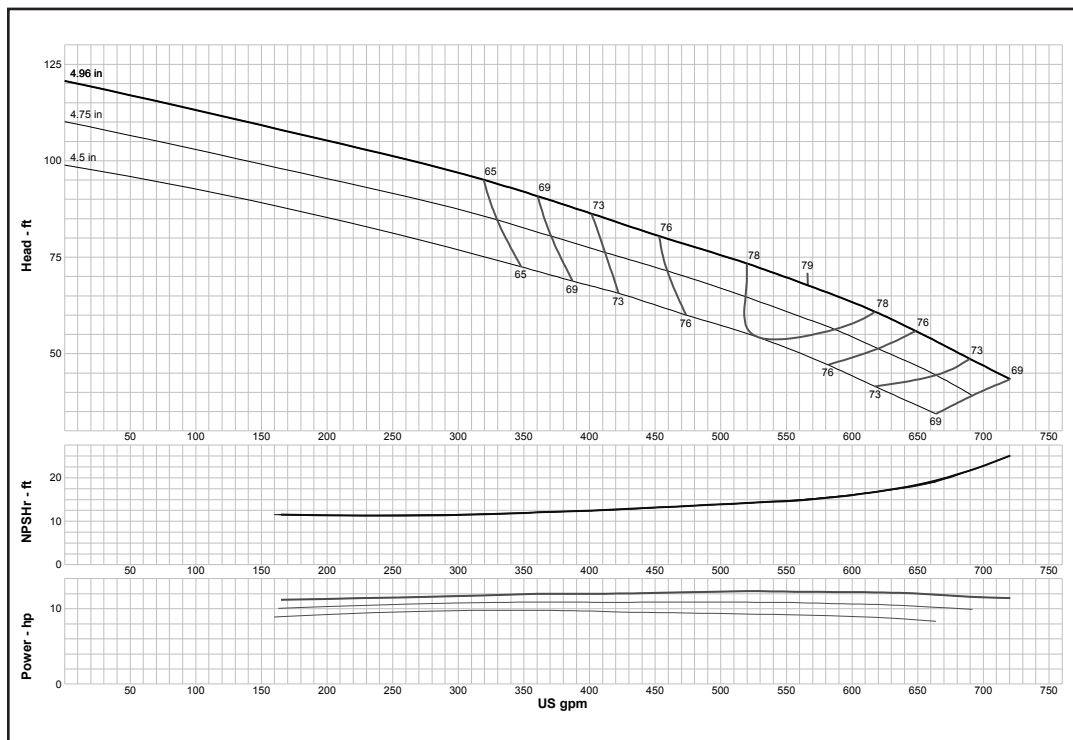
MODEL 7THC (Effective July 1, 2014)



Curve No. E6207TFPC2	
Model	7THC
RPM	3550
EFFICIENCY CORRECTION	
1-STAGE	-3
2-STAGE	-2
3-STAGE	-1
4-STAGE	0
Impeller	ENCLOSED
Ns =	3655
K =	4.56
Bowl O. D.	7.13 in
Bowl Lateral	0.38
Max. PSI	310
Disch size	5", 6"
TURBINE OPERATIONS	
Lubbock, Texas	
BOWL PERFORMANCE CURVE BASED ON PUMPING CLEAR, NON-AERATED WATER. RATED POINT ONLY IS GUARANTEED. CURVES REPRESENT SINGLE STAGE PERFORMANCE BASED ON TEST OF MULTI-STAGE BOWL ASSEMBLY. EFFICIENCY CORRECTION APPLIES TO HEAD, FLOW AND HORSEPOWER FOR LESSER STAGES.	

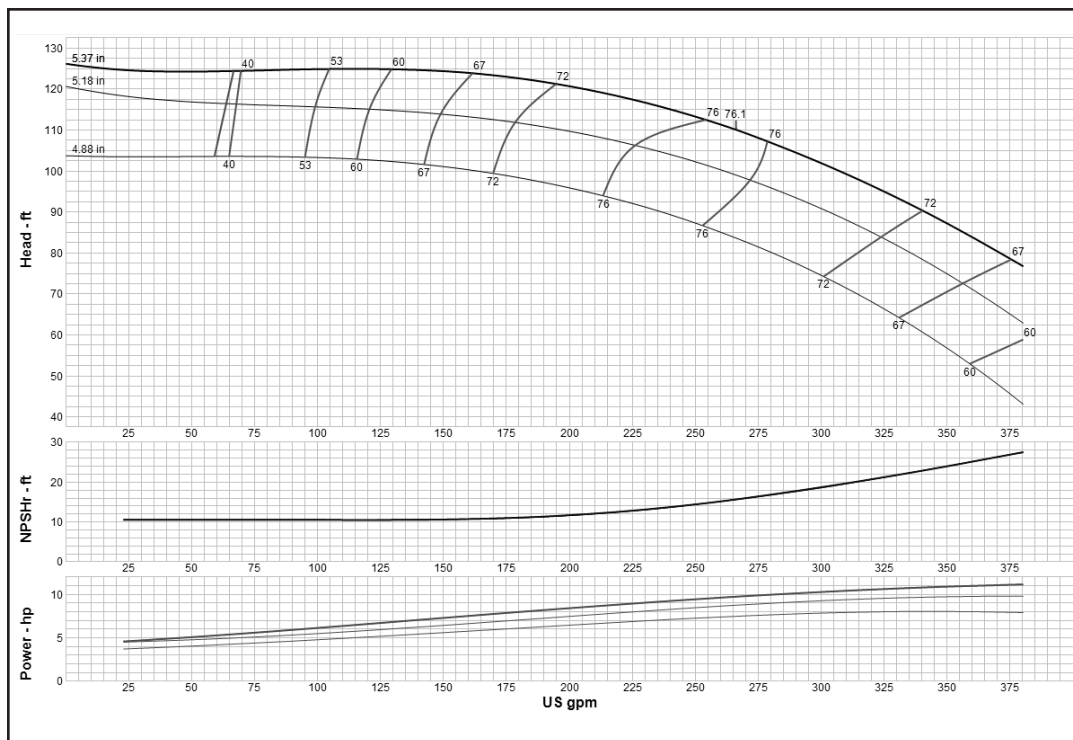
Turbine

MODEL 7TLC (Effective July 1, 2014)



Curve No. E6207TAPC2	
Model	7TLC
RPM	3550
EFFICIENCY CORRECTION	
1-STAGE	-3
2-STAGE	-2
3-STAGE	-1
4-STAGE	0
Impeller	ENCLOSED
Ns =	3575
K =	4.5
Bowl O. D.	7.13 in
Bowl Lateral	0.38
Max. PSI	310
Disch size	5", 6"
TURBINE OPERATIONS	
Lubbock, Texas	
BOWL PERFORMANCE CURVE BASED ON PUMPING CLEAR, NON-AERATED WATER. RATED POINT ONLY IS GUARANTEED. CURVES REPRESENT SINGLE STAGE PERFORMANCE BASED ON TEST OF MULTI-STAGE BOWL ASSEMBLY. EFFICIENCY CORRECTION APPLIES TO HEAD, FLOW AND HORSEPOWER FOR LESSER STAGES.	

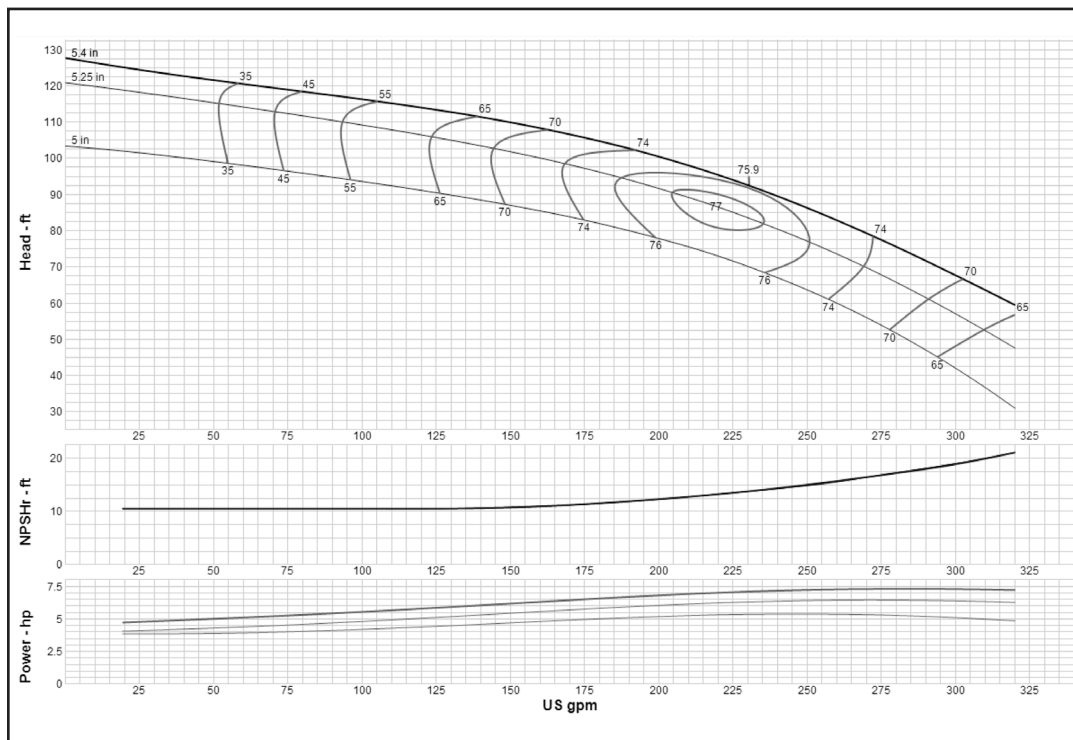
MODEL 7WAHC (Effective September 1, 2017)



Curve No. E6207WAPC1	
Model	7WAHC
RPM	3550
EFFICIENCY CORRECTION	
1-STAGE	-2
2-STAGE	-1
3-STAGE	-0.5
4-STAGE	0
Impeller	ENCLOSED
Ns =	1567
K =	2.63
Bowl O. D.	7.13 in
Bowl Lateral	0.5
Max. PSI	365
Disch size	4", 5", 6"
TURBINE OPERATIONS	
Lubbock, Texas	
BOWL PERFORMANCE CURVE BASED ON PUMPING CLEAR, NON-AERATED WATER. RATED POINT ONLY IS GUARANTEED. CURVES REPRESENT SINGLE STAGE PERFORMANCE BASED ON TEST OF MULTI-STAGE BOWL ASSEMBLY. EFFICIENCY CORRECTION APPLIES TO HEAD, FLOW AND HORSEPOWER FOR LESSER STAGES.	

Turbine

MODEL 7WALC (Effective September 1, 2017)



Curve No. E6207WBPCO

Model 7WALC

RPM 3550

EFFICIENCY CORRECTION

1-STAGE	-2
2-STAGE	-1
3-STAGE	-0.5
4-STAGE	0

Impeller ENCLOSED

Ns = 1655

K = 2.63

Bowl O. D. 7.13 in

Bowl Lateral 0.5

Max. PSI 365

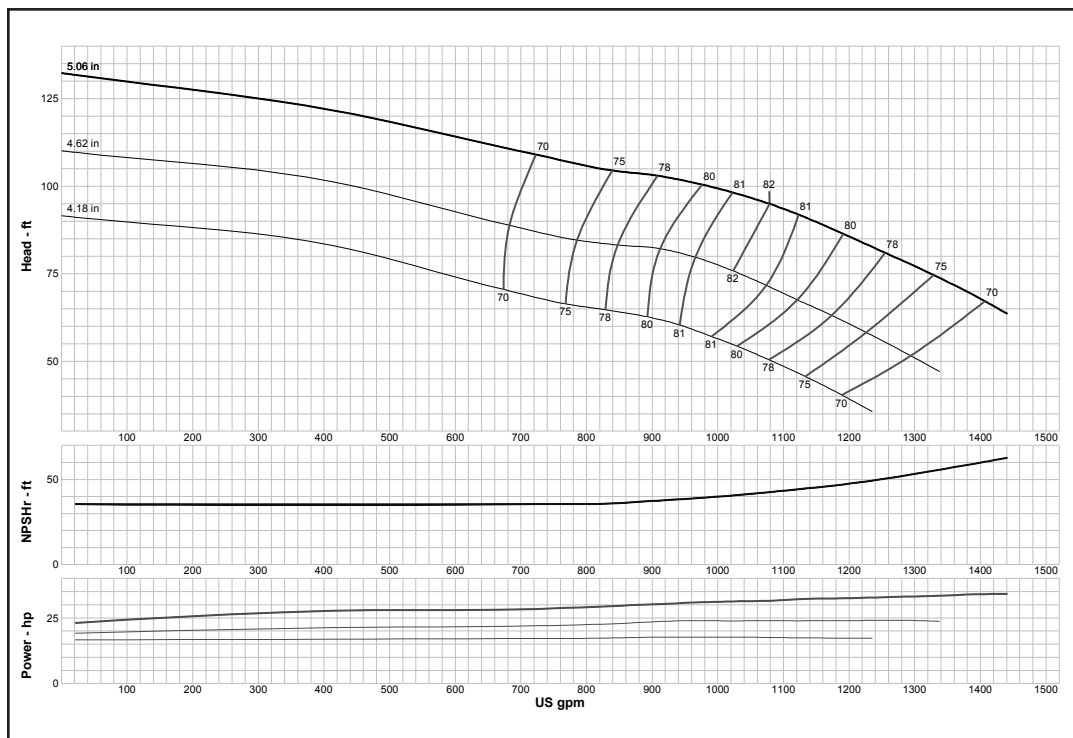
Disch size 4", 5", 6"

TURBINE OPERATIONS

Lubbock, Texas

BOWL PERFORMANCE CURVE BASED ON PUMPING CLEAR, NON-AERATED WATER. RATED POINT ONLY IS GUARANTEED. CURVES REPRESENT SINGLE STAGE PERFORMANCE BASED ON TEST OF MULTI-STAGE BOWL ASSEMBLY. EFFICIENCY CORRECTION APPLIES TO HEAD, FLOW AND HORSEPOWER FOR LESSER STAGES.

MODEL 8FDHC (Effective July 1, 2014)



Curve No. E6208FDPCO

Model 8FDHC

RPM 3550

EFFICIENCY CORRECTION

1-STAGE	-4
2-STAGE	-2
3-STAGE	-1
4-STAGE	0

Impeller ENCLOSED

Ns = 3850

K = 7.9

Bowl O. D. 7.31 in

Bowl Lateral 0.56

Max. PSI 400

Disch size 5", 6"

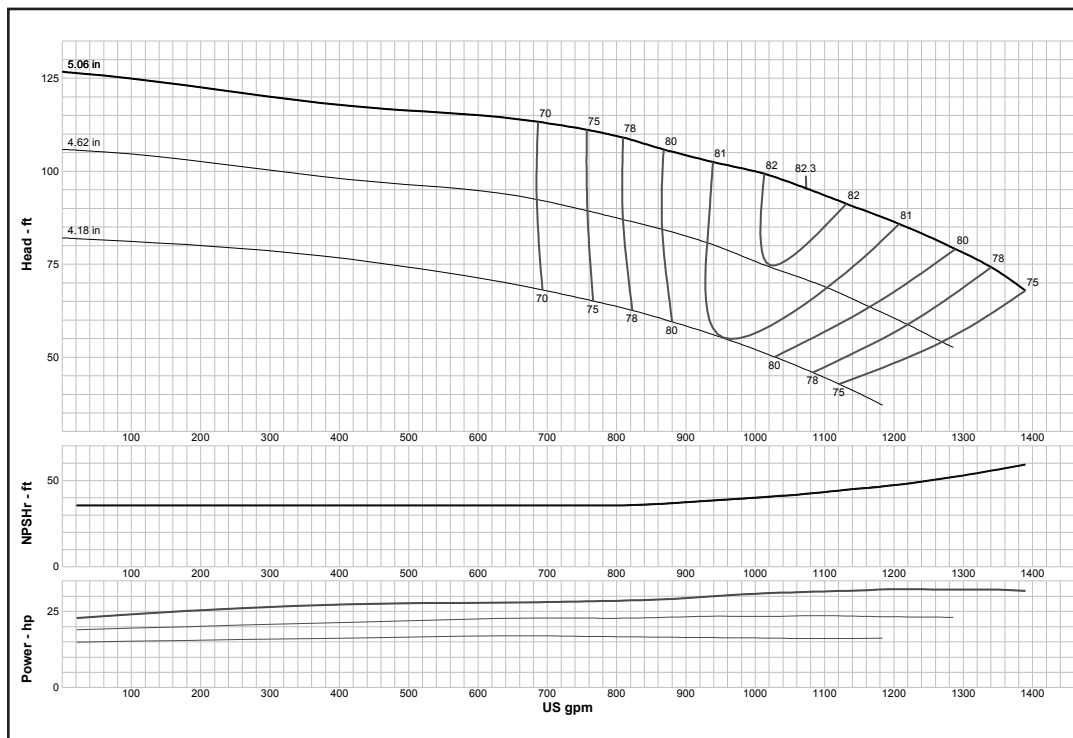
TURBINE OPERATIONS

Lubbock, Texas

BOWL PERFORMANCE CURVE BASED ON PUMPING CLEAR, NON-AERATED WATER. RATED POINT ONLY IS GUARANTEED. CURVES REPRESENT SINGLE STAGE PERFORMANCE BASED ON TEST OF MULTI-STAGE BOWL ASSEMBLY. EFFICIENCY CORRECTION APPLIES TO HEAD, FLOW AND HORSEPOWER FOR LESSER STAGES.

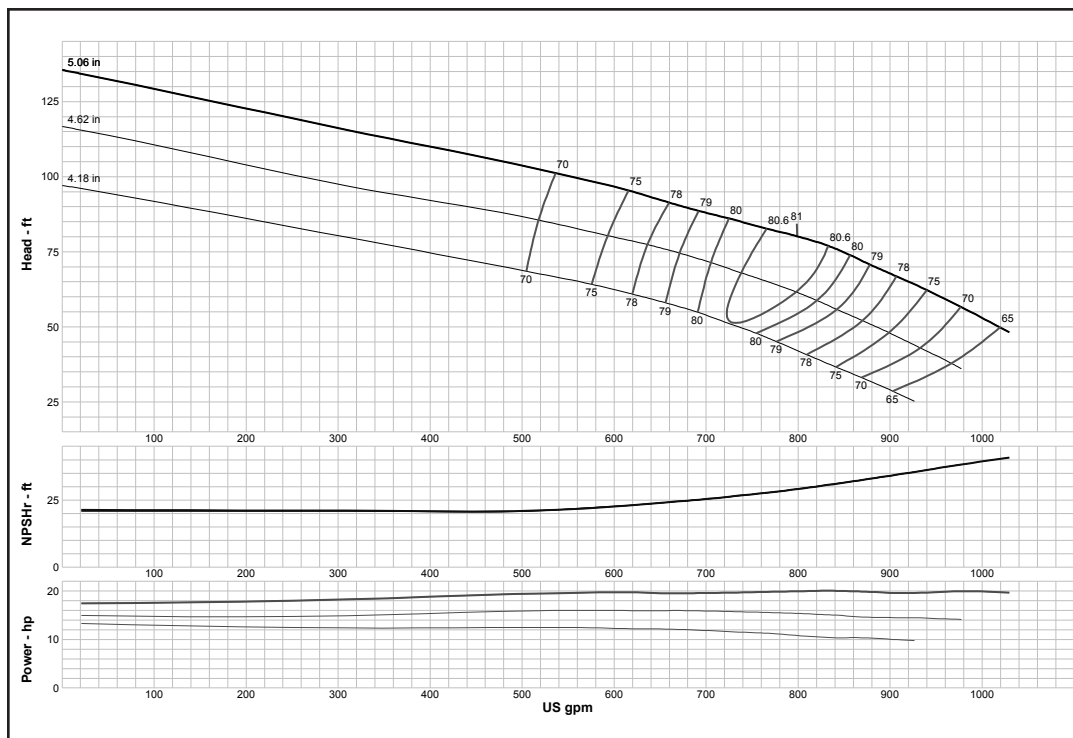
Turbine

MODEL 8FDHO (Effective July 1, 2014)



Curve No. E6208FEPC0	
Model	8FDHO
RPM	3550
EFFICIENCY CORRECTION	
1-STAGE	-3
2-STAGE	-1.5
3-STAGE	-1
4-STAGE	0
Impeller	OPEN
Ns =	3850
K =	9.9
Bowl O. D.	7.31 in
Bowl Lateral	0.56
Max. PSI	400
Disch size	5", 6"
TURBINE OPERATIONS	
Lubbock, Texas	
BOWL PERFORMANCE CURVE BASED ON PUMPING CLEAR, NON-AERATED WATER. RATED POINT ONLY IS GUARANTEED. CURVES REPRESENT SINGLE STAGE PERFORMANCE BASED ON TEST OF MULTI-STAGE BOWL ASSEMBLY. EFFICIENCY CORRECTION APPLIES TO HEAD, FLOW AND HORSEPOWER FOR LESSER STAGES.	

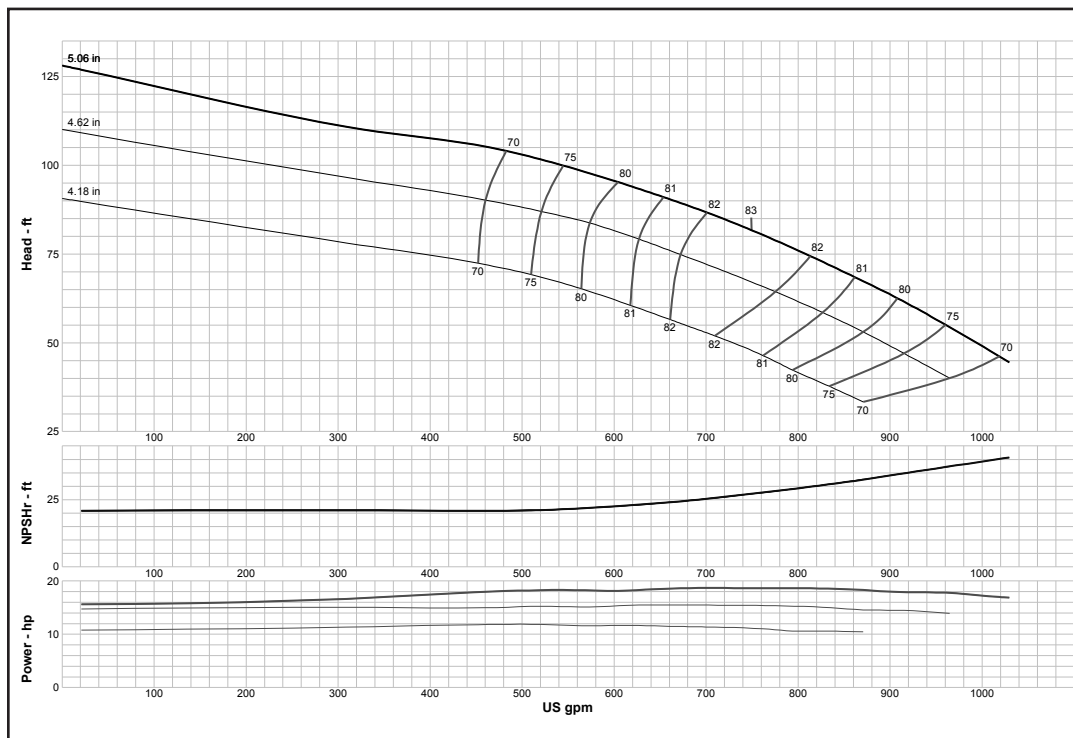
MODEL 8FDLC (Effective July 1, 2014)



Curve No. E6208FFPC0	
Model	8FDLC
RPM	3550
EFFICIENCY CORRECTION	
1-STAGE	-3
2-STAGE	-1.5
3-STAGE	-1
4-STAGE	0
Impeller	ENCLOSED
Ns =	3750
K =	7.9
Bowl O. D.	7.31 in
Bowl Lateral	0.56
Max. PSI	400
Disch size	5", 6"
TURBINE OPERATIONS	
Lubbock, Texas	
BOWL PERFORMANCE CURVE BASED ON PUMPING CLEAR, NON-AERATED WATER. RATED POINT ONLY IS GUARANTEED. CURVES REPRESENT SINGLE STAGE PERFORMANCE BASED ON TEST OF MULTI-STAGE BOWL ASSEMBLY. EFFICIENCY CORRECTION APPLIES TO HEAD, FLOW AND HORSEPOWER FOR LESSER STAGES.	

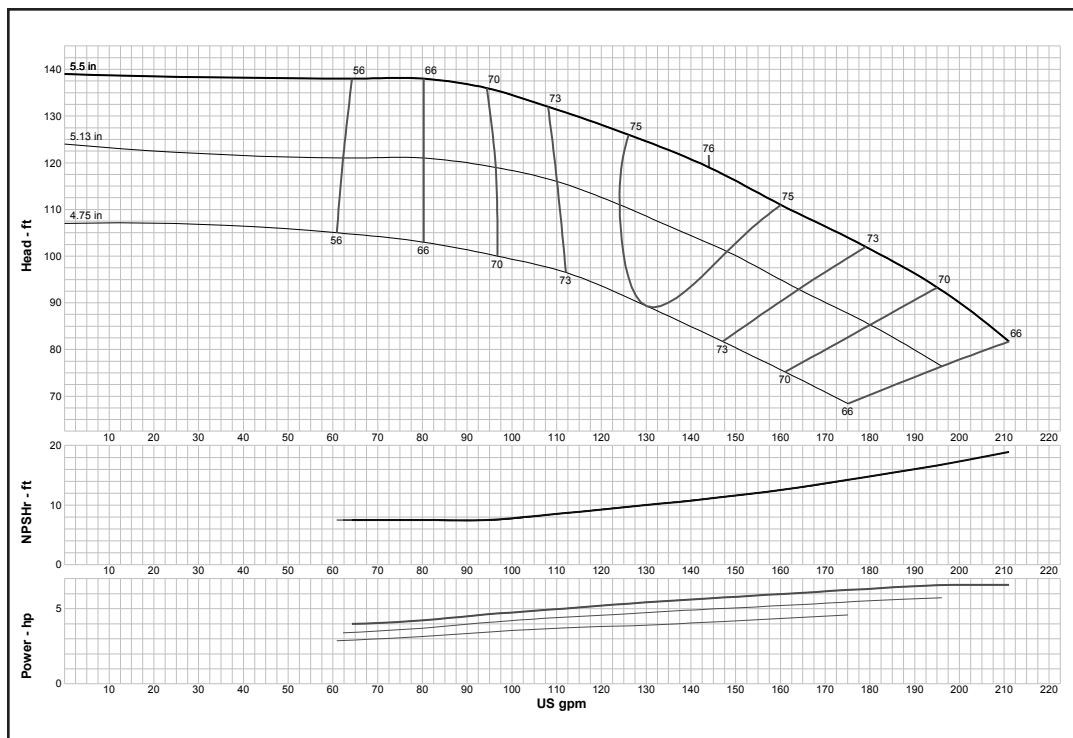
Turbine

MODEL 8FDLO (Effective July 1, 2014)



Curve No. E6208FGPC0	
Model	8FDLO
RPM	3550
EFFICIENCY CORRECTION	
1-STAGE	-3
2-STAGE	-1.5
3-STAGE	-1
4-STAGE	0
Impeller	OPEN
Ns =	3750
K =	9.9
Bowl O. D.	7.31 in
Bowl Lateral	0.56
Max. PSI	400
Disch size	5", 6"
TURBINE OPERATIONS	
Lubbock, Texas	
BOWL PERFORMANCE CURVE BASED ON PUMPING CLEAR, NON-AERATED WATER. RATED POINT ONLY IS GUARANTEED. CURVES REPRESENT SINGLE STAGE PERFORMANCE BASED ON TEST OF MULTI-STAGE BOWL ASSEMBLY. EFFICIENCY CORRECTION APPLIES TO HEAD, FLOW AND HORSEPOWER FOR LESSER STAGES.	

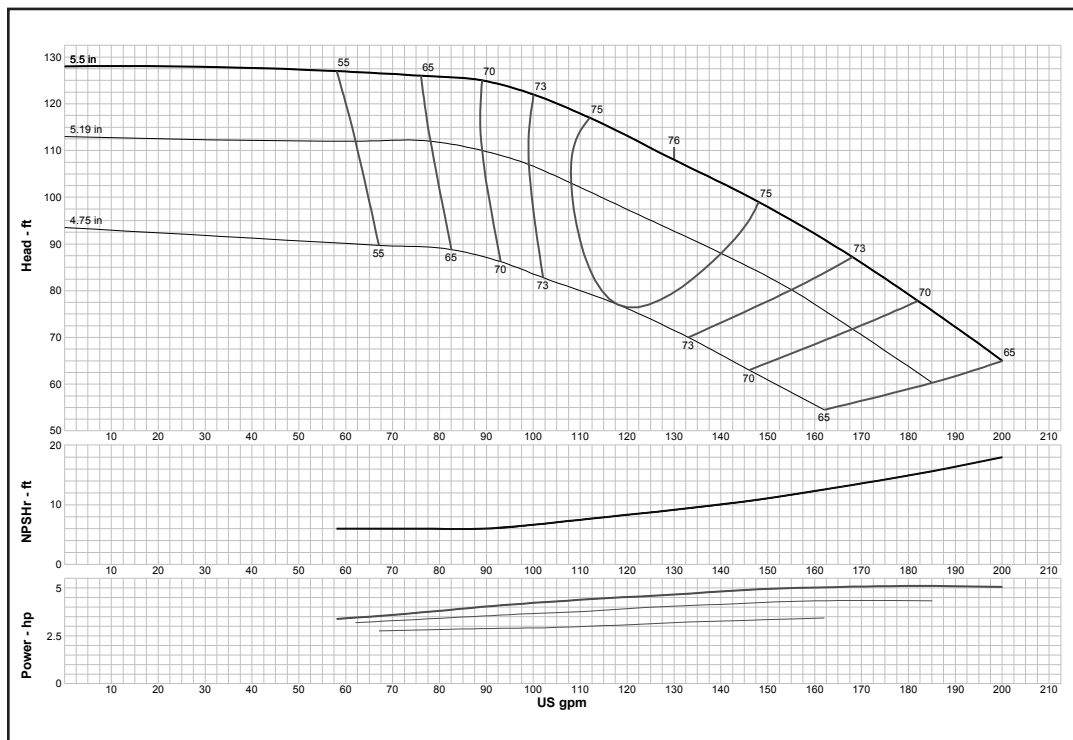
MODEL 8RAHC (Effective July 1, 2014)



Curve No. E6208AAPC7	
Model	8RAHC
RPM	3550
EFFICIENCY CORRECTION	
1-STAGE	-4
2-STAGE	-2
3-STAGE	-1
4-STAGE	0
Impeller	ENCLOSED
Ns =	1184
K =	2
Bowl O. D.	7.50 in
Bowl Lateral	0.25
Max. PSI	430
Disch size	4", 5", 6"
TURBINE OPERATIONS	
Lubbock, Texas	
BOWL PERFORMANCE CURVE BASED ON PUMPING CLEAR, NON-AERATED WATER. RATED POINT ONLY IS GUARANTEED. CURVES REPRESENT SINGLE STAGE PERFORMANCE BASED ON TEST OF MULTI-STAGE BOWL ASSEMBLY. EFFICIENCY CORRECTION APPLIES TO HEAD, FLOW AND HORSEPOWER FOR LESSER STAGES.	

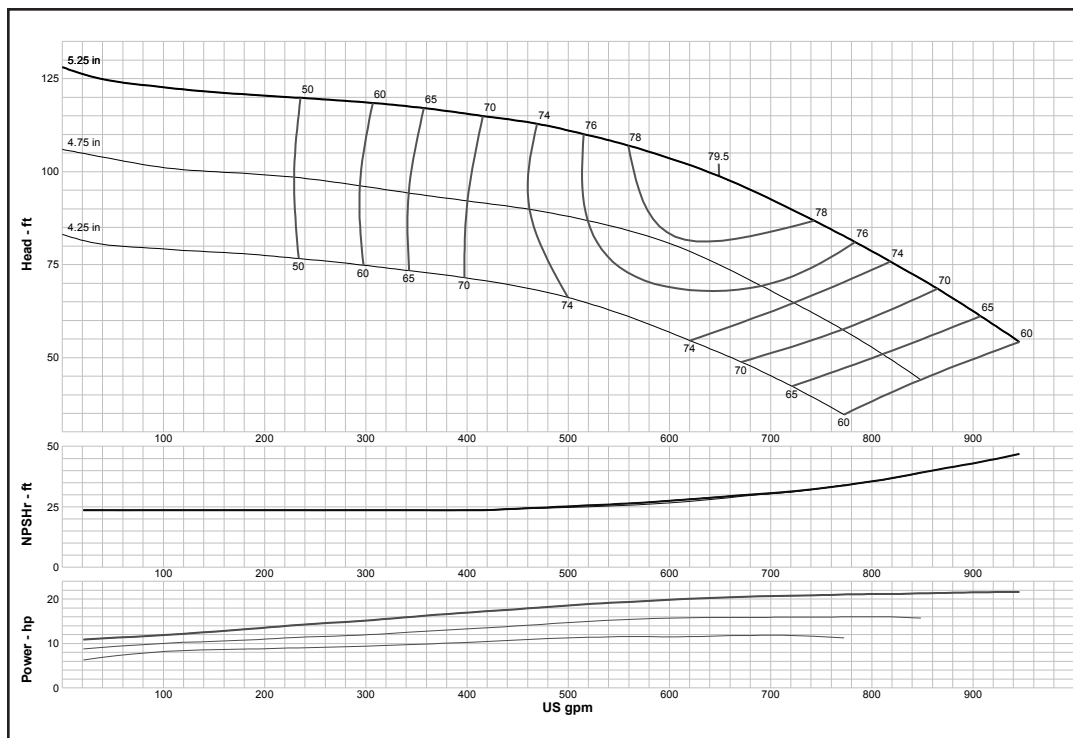
Turbine

MODEL 8RALC (Effective July 1, 2014)



Curve No. E6208ACPC5	
Model	8RALC
RPM	3550
EFFICIENCY CORRECTION	
1-STAGE	-4
2-STAGE	-2
3-STAGE	-1
4-STAGE	0
Impeller	ENCLOSED
Ns =	1208
K =	2
Bowl O. D.	7.50 in
Bowl Lateral	0.25
Max. PSI	430
Disch size	4", 5", 6"
TURBINE OPERATIONS	
Lubbock, Texas	
BOWL PERFORMANCE CURVE BASED ON PUMPING CLEAR, NON-AERATED WATER. RATED POINT ONLY IS GUARANTEED. CURVES REPRESENT SINGLE STAGE PERFORMANCE BASED ON TEST OF MULTI-STAGE BOWL ASSEMBLY. EFFICIENCY CORRECTION APPLIES TO HEAD, FLOW AND HORSEPOWER FOR LESSER STAGES.	

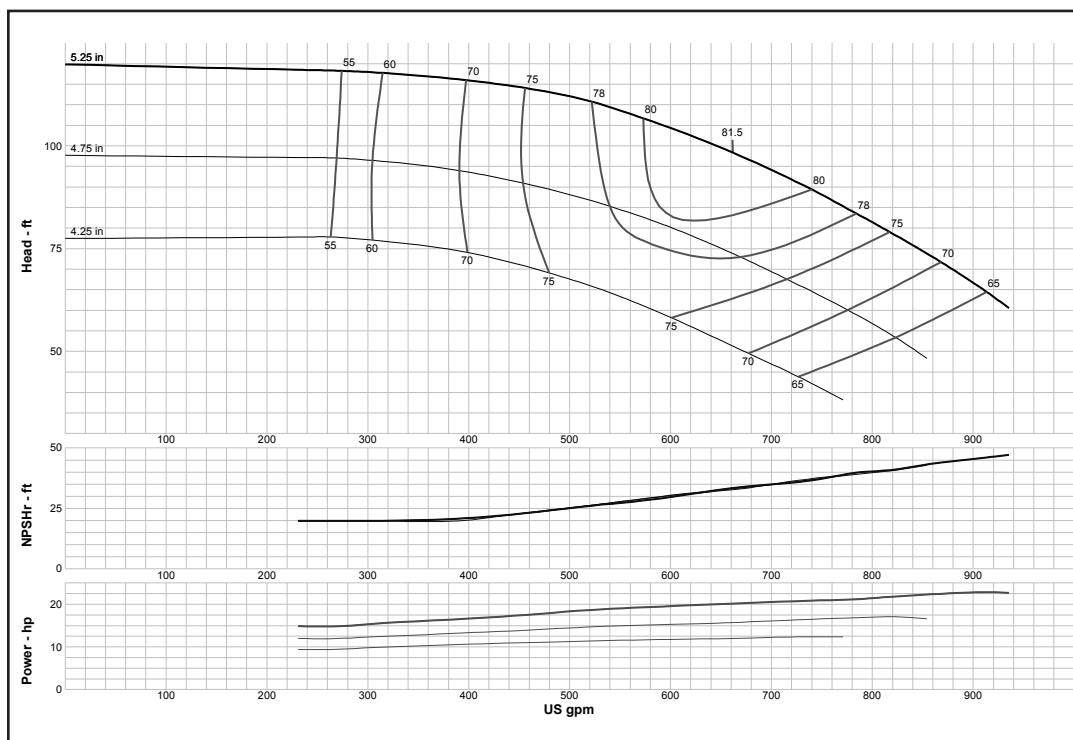
MODEL 8RJHC (Effective July 1, 2014)



Curve No. E6208RCPCO	
Model	8RJHC
RPM	3550
EFFICIENCY CORRECTION	
1-STAGE	0
2-STAGE	0
3-STAGE	0
4-STAGE	0
Impeller	ENCLOSED
Ns =	2849
K =	4
Bowl O. D.	7.50 in
Bowl Lateral	0.63
Max. PSI	425
Disch size	4", 5", 6"
TURBINE OPERATIONS	
Lubbock, Texas	
BOWL PERFORMANCE CURVE BASED ON PUMPING CLEAR, NON-AERATED WATER. RATED POINT ONLY IS GUARANTEED. CURVES REPRESENT SINGLE STAGE PERFORMANCE BASED ON TEST OF MULTI-STAGE BOWL ASSEMBLY. EFFICIENCY CORRECTION APPLIES TO HEAD, FLOW AND HORSEPOWER FOR LESSER STAGES.	

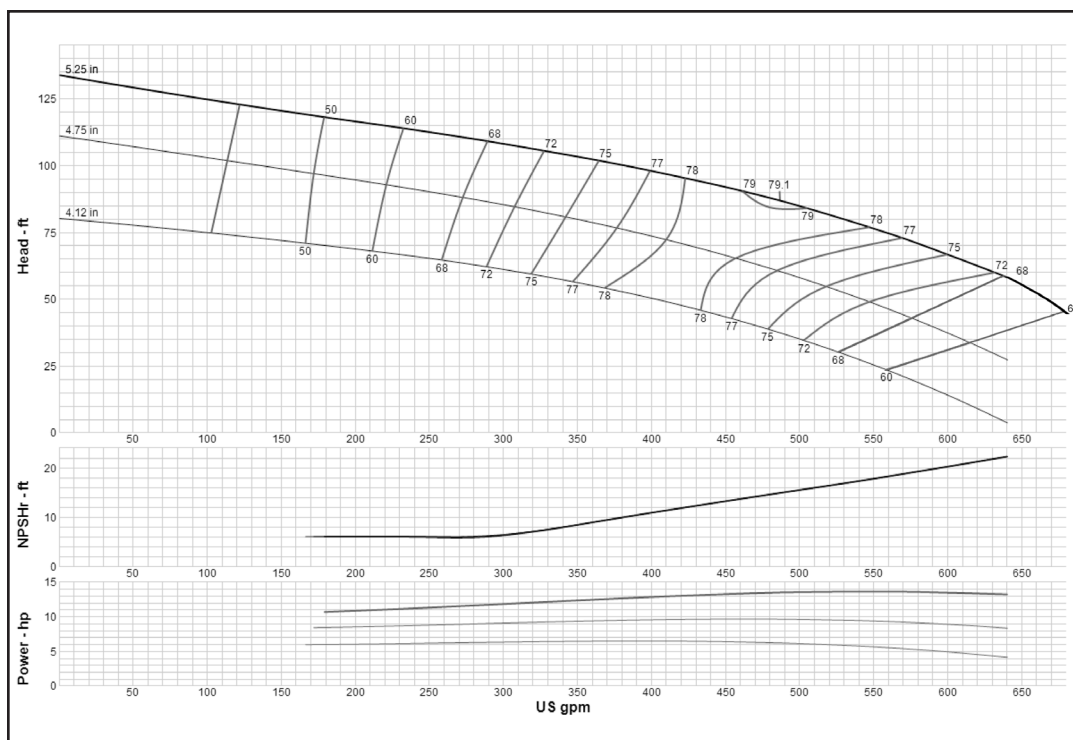
Turbine

MODEL 8RJHO (Effective July 1, 2014)



Curve No. E6208RDPC1	
Model	8RJHO
RPM	3550
EFFICIENCY CORRECTION	
1-STAGE	0
2-STAGE	0
3-STAGE	0
4-STAGE	0
Impeller	OPEN
Ns =	2825
K =	5.3
Bowl O. D.	7.50 in
Bowl Lateral	0.63
Max. PSI	425
Disch size	4", 5", 6"
TURBINE OPERATIONS	
Lubbock, Texas	
BOWL PERFORMANCE CURVE BASED ON PUMPING CLEAR, NON-AERATED WATER. RATED POINT ONLY IS GUARANTEED. CURVES REPRESENT SINGLE STAGE PERFORMANCE BASED ON TEST OF MULTI-STAGE BOWL ASSEMBLY. EFFICIENCY CORRECTION APPLIES TO HEAD, FLOW AND HORSEPOWER FOR LESSER STAGES.	

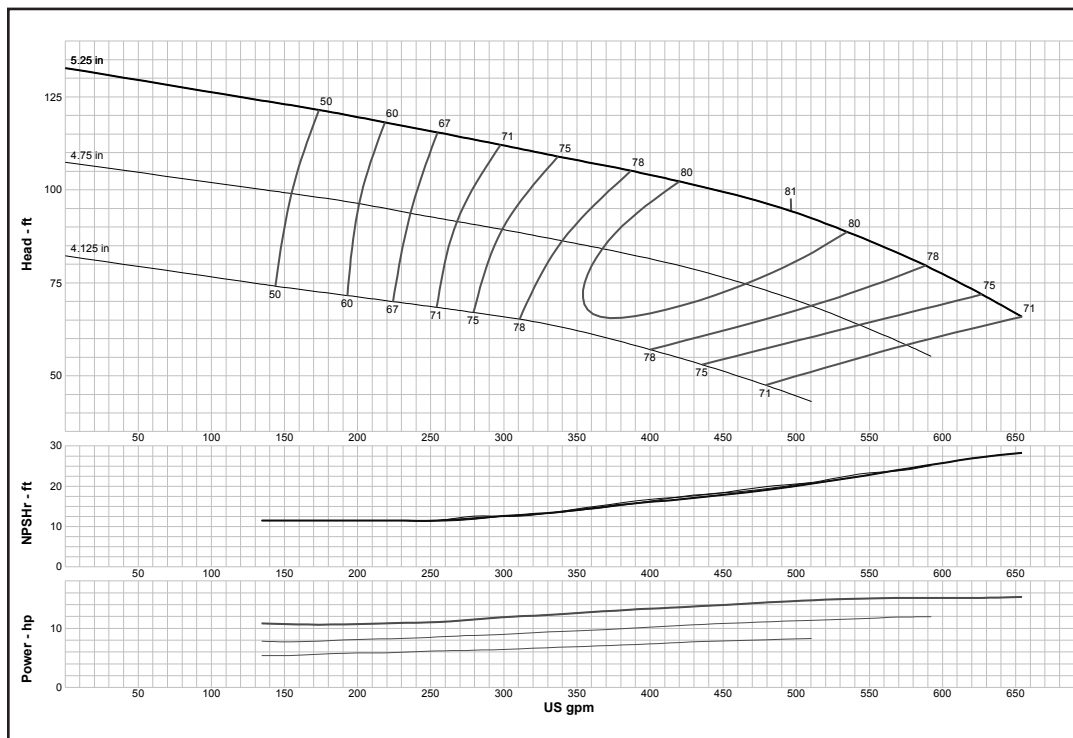
MODEL 8RJLC (Effective September 1, 2017)



Curve No. E6208REPC1	
Model	8RJLC
RPM	3550
EFFICIENCY CORRECTION	
1-STAGE	0
2-STAGE	0
3-STAGE	0
4-STAGE	0
Impeller	ENCLOSED
Ns =	2815
K =	4
Bowl O. D.	7.50 in
Bowl Lateral	0.62
Max. PSI	425
Disch size	4", 5", 6"
TURBINE OPERATIONS	
Lubbock, Texas	
BOWL PERFORMANCE CURVE BASED ON PUMPING CLEAR, NON-AERATED WATER. RATED POINT ONLY IS GUARANTEED. CURVES REPRESENT SINGLE STAGE PERFORMANCE BASED ON TEST OF MULTI-STAGE BOWL ASSEMBLY. EFFICIENCY CORRECTION APPLIES TO HEAD, FLOW AND HORSEPOWER FOR LESSER STAGES.	

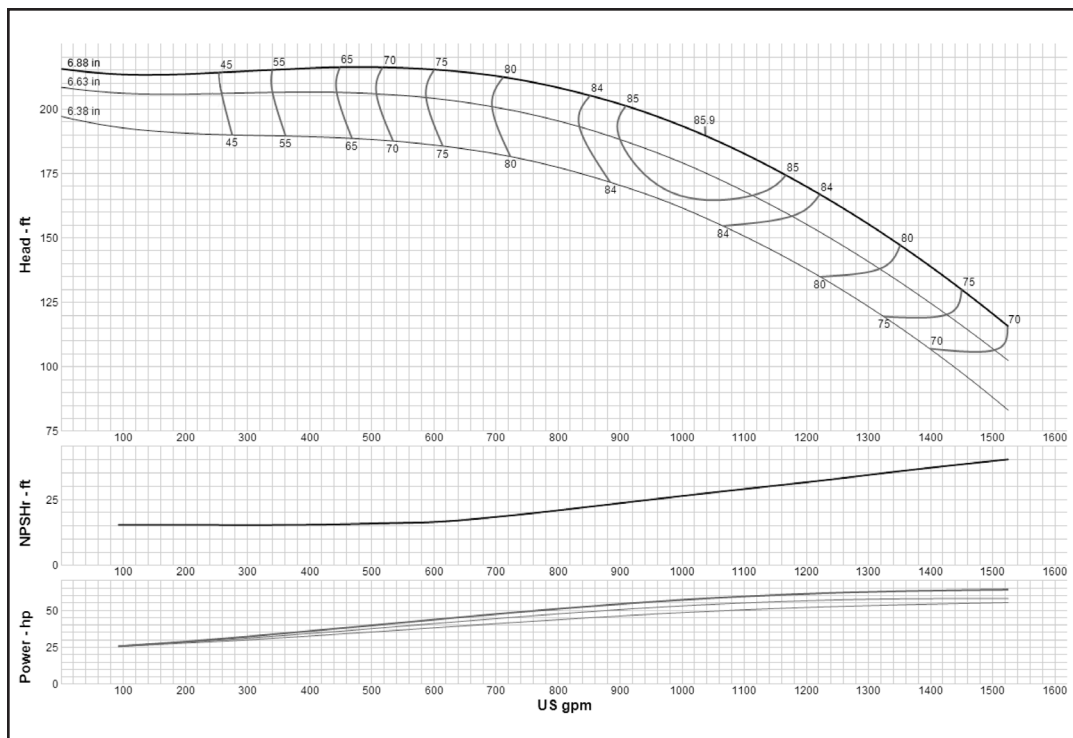
Turbine

MODEL 8RJLO (Effective July 1, 2014)



Curve No. E6208RFPC1	
Model	8RJLO
RPM	3550
EFFICIENCY CORRECTION	
1-STAGE	0
2-STAGE	0
3-STAGE	0
4-STAGE	0
Impeller	OPEN
Ns =	2625
K =	5.3
Bowl O. D.	7.50 in
Bowl Lateral	0.63
Max. PSI	425
Disch size	4", 5", 6"
TURBINE OPERATIONS	
Lubbock, Texas	
BOWL PERFORMANCE CURVE BASED ON PUMPING CLEAR, NON-AERATED WATER. RATED POINT ONLY IS GUARANTEED. CURVES REPRESENT SINGLE STAGE PERFORMANCE BASED ON TEST OF MULTI-STAGE BOWL ASSEMBLY. EFFICIENCY CORRECTION APPLIES TO HEAD, FLOW AND HORSEPOWER FOR LESSER STAGES.	

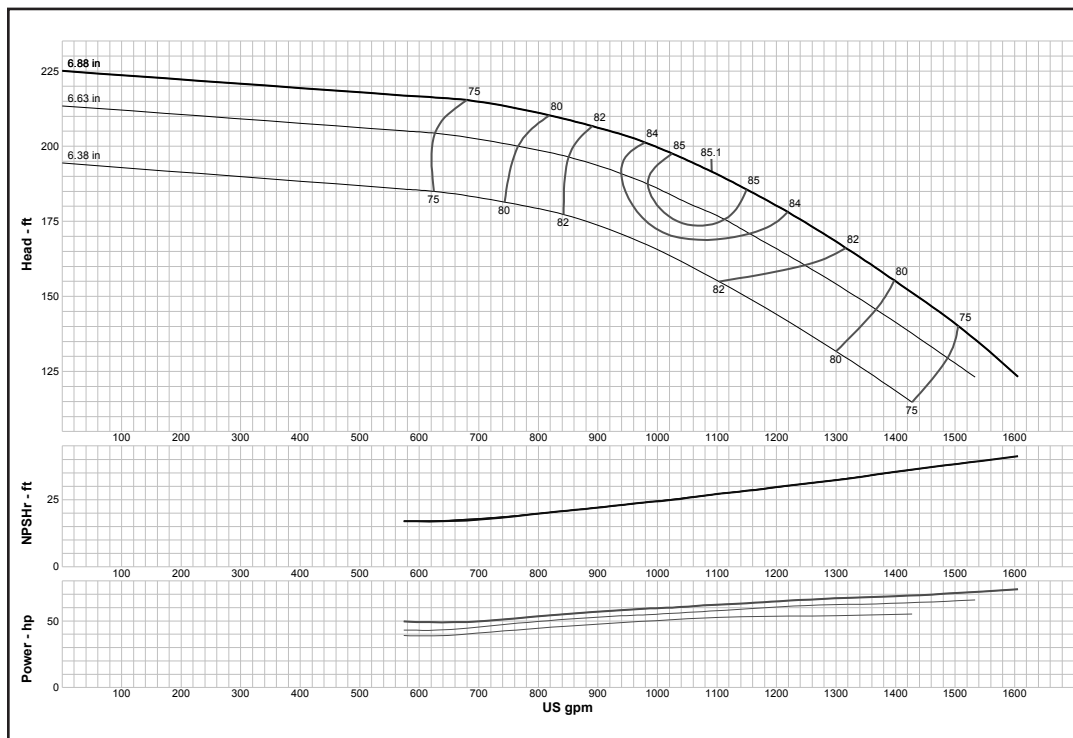
MODEL 9RCHC (Effective September 1, 2017)



Curve No. E6209CCPC2	
Model	9RCHC
RPM	3550
EFFICIENCY CORRECTION	
1-STAGE	-2
2-STAGE	-1
3-STAGE	-0.5
4-STAGE	0
Impeller	ENCLOSED
Ns =	2283
K =	4.9
Bowl O. D.	9.25 in
Bowl Lateral	0.88
Max. PSI	400
Disch size	5", 6", 8"
TURBINE OPERATIONS	
Lubbock, Texas	
BOWL PERFORMANCE CURVE BASED ON PUMPING CLEAR, NON-AERATED WATER. RATED POINT ONLY IS GUARANTEED. CURVES REPRESENT SINGLE STAGE PERFORMANCE BASED ON TEST OF MULTI-STAGE BOWL ASSEMBLY. EFFICIENCY CORRECTION APPLIES TO HEAD, FLOW AND HORSEPOWER FOR LESSER STAGES.	

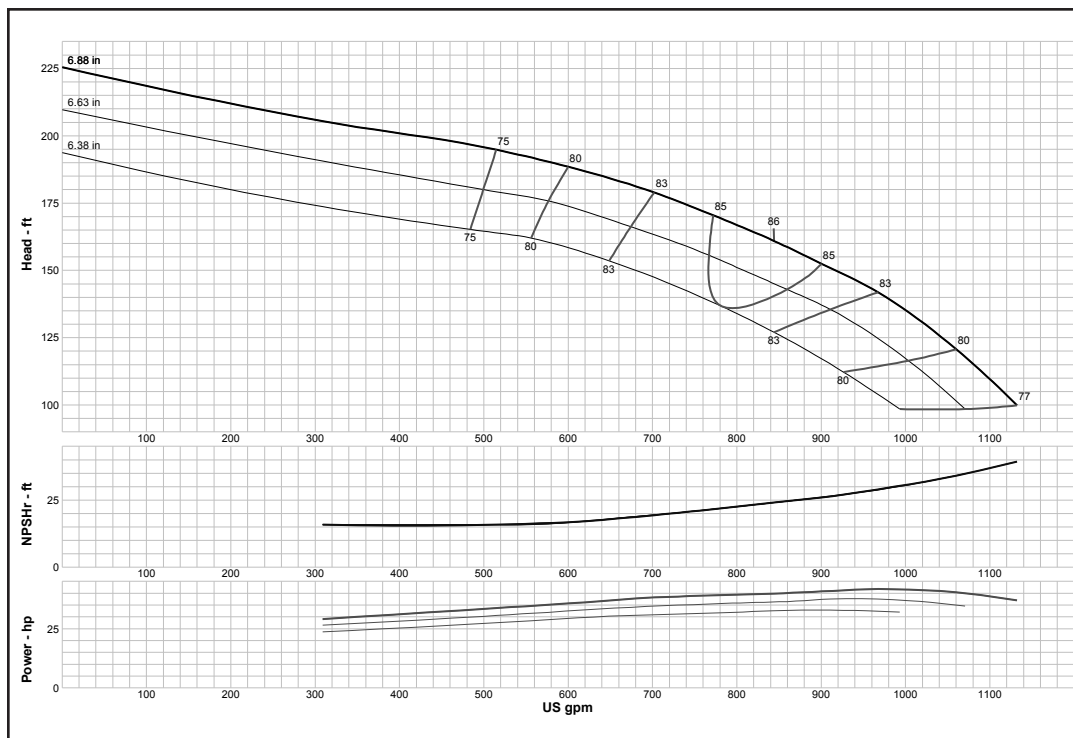
Turbine

MODEL 9RCHO (Effective July 1, 2014)



Curve No. E6409CHPC1	
Model	9RCHO
RPM	3550
EFFICIENCY CORRECTION	
1-STAGE	-2
2-STAGE	-1
3-STAGE	-0.5
4-STAGE	0
Impeller	OPEN
Ns =	2300
K =	7
Bowl O. D.	9.25 in
Bowl Lateral	0.88
Max. PSI	400
Disch size	5", 6", 8"
TURBINE OPERATIONS	
Lubbock, Texas	
BOWL PERFORMANCE CURVE BASED ON PUMPING CLEAR, NON-AERATED WATER. RATED POINT ONLY IS GUARANTEED. CURVES REPRESENT SINGLE STAGE PERFORMANCE BASED ON TEST OF MULTI-STAGE BOWL ASSEMBLY. EFFICIENCY CORRECTION APPLIES TO HEAD, FLOW AND HORSEPOWER FOR LESSER STAGES.	

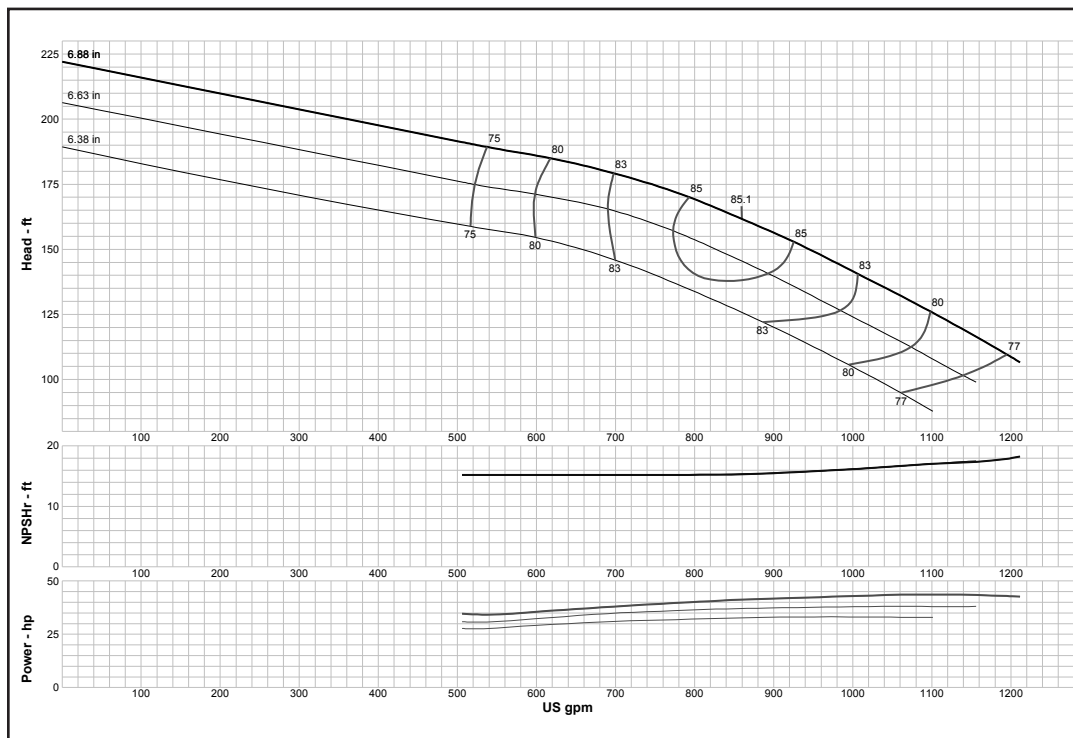
MODEL 9RCLC (Effective July 1, 2014)



Curve No. E6209CFPC2	
Model	9RCLC
RPM	3550
EFFICIENCY CORRECTION	
1-STAGE	-2
2-STAGE	-1
3-STAGE	-0.5
4-STAGE	0
Impeller	ENCLOSED
Ns =	2282
K =	4.9
Bowl O. D.	9.25 in
Bowl Lateral	0.88
Max. PSI	400
Disch size	5", 6", 8"
TURBINE OPERATIONS	
Lubbock, Texas	
BOWL PERFORMANCE CURVE BASED ON PUMPING CLEAR, NON-AERATED WATER. RATED POINT ONLY IS GUARANTEED. CURVES REPRESENT SINGLE STAGE PERFORMANCE BASED ON TEST OF MULTI-STAGE BOWL ASSEMBLY. EFFICIENCY CORRECTION APPLIES TO HEAD, FLOW AND HORSEPOWER FOR LESSER STAGES.	

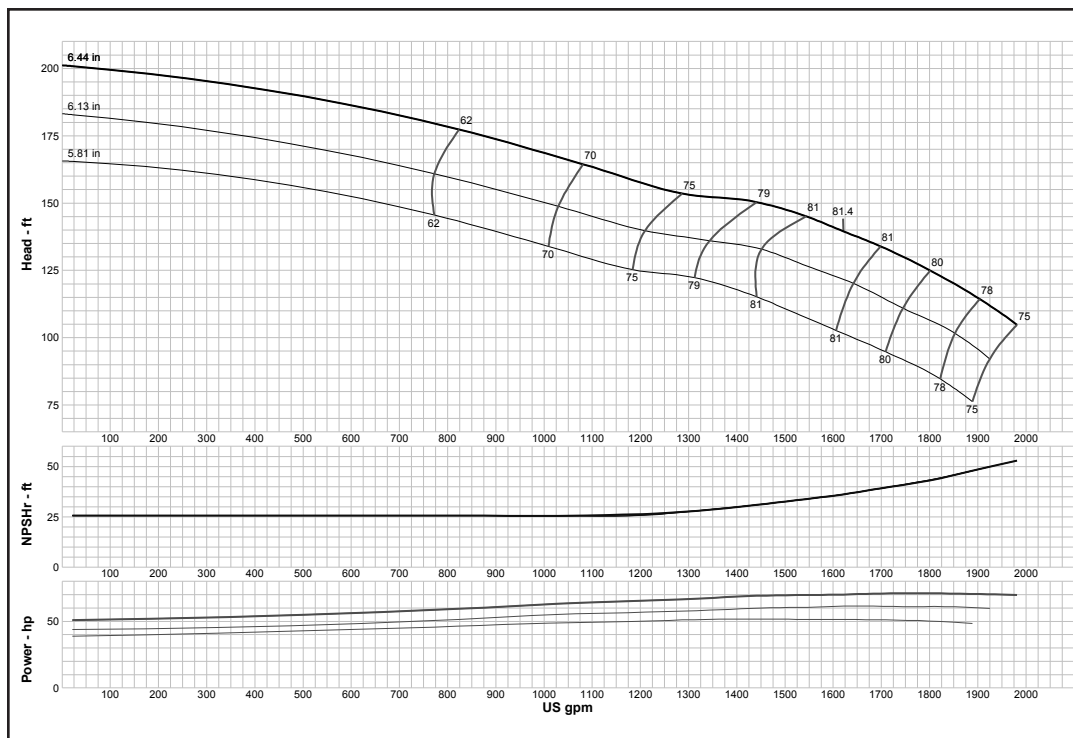
Turbine

MODEL 9RCLO (Effective July 1, 2014)



Curve No. E6409CJPC1	
Model	9RCLO
RPM	3550
EFFICIENCY CORRECTION	
1-STAGE	-2
2-STAGE	-1
3-STAGE	-0.5
4-STAGE	0
Impeller	OPEN
Ns =	2290
K =	7
Bowl O. D.	9.25 in
Bowl Lateral	0.88
Max. PSI	400
Disch size	5", 6", 8"
TURBINE OPERATIONS	
Lubbock, Texas	
BOWL PERFORMANCE CURVE BASED ON PUMPING CLEAR, NON-AERATED WATER. RATED POINT ONLY IS GUARANTEED. CURVES REPRESENT SINGLE STAGE PERFORMANCE BASED ON TEST OF MULTI-STAGE BOWL ASSEMBLY. EFFICIENCY CORRECTION APPLIES TO HEAD, FLOW AND HORSEPOWER FOR LESSER STAGES.	

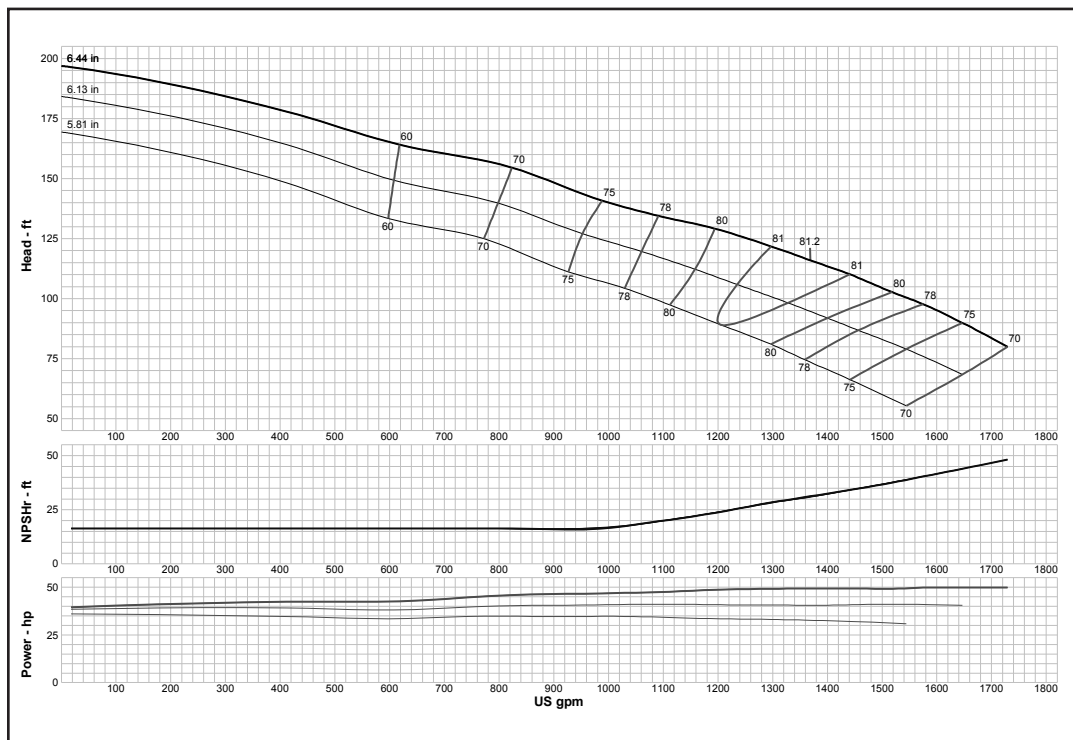
MODEL 9THC (Effective July 1, 2014)



Curve No. E6209TEPC2	
Model	9THC
RPM	3550
EFFICIENCY CORRECTION	
1-STAGE	-2
2-STAGE	-1
3-STAGE	0
4-STAGE	0
Impeller	ENCLOSED
Ns =	3520
K =	9
Bowl O. D.	9.25 in
Bowl Lateral	0.75
Max. PSI	530
Disch size	5", 6", 8"
TURBINE OPERATIONS	
Lubbock, Texas	
BOWL PERFORMANCE CURVE BASED ON PUMPING CLEAR, NON-AERATED WATER. RATED POINT ONLY IS GUARANTEED. CURVES REPRESENT SINGLE STAGE PERFORMANCE BASED ON TEST OF MULTI-STAGE BOWL ASSEMBLY. EFFICIENCY CORRECTION APPLIES TO HEAD, FLOW AND HORSEPOWER FOR LESSER STAGES.	

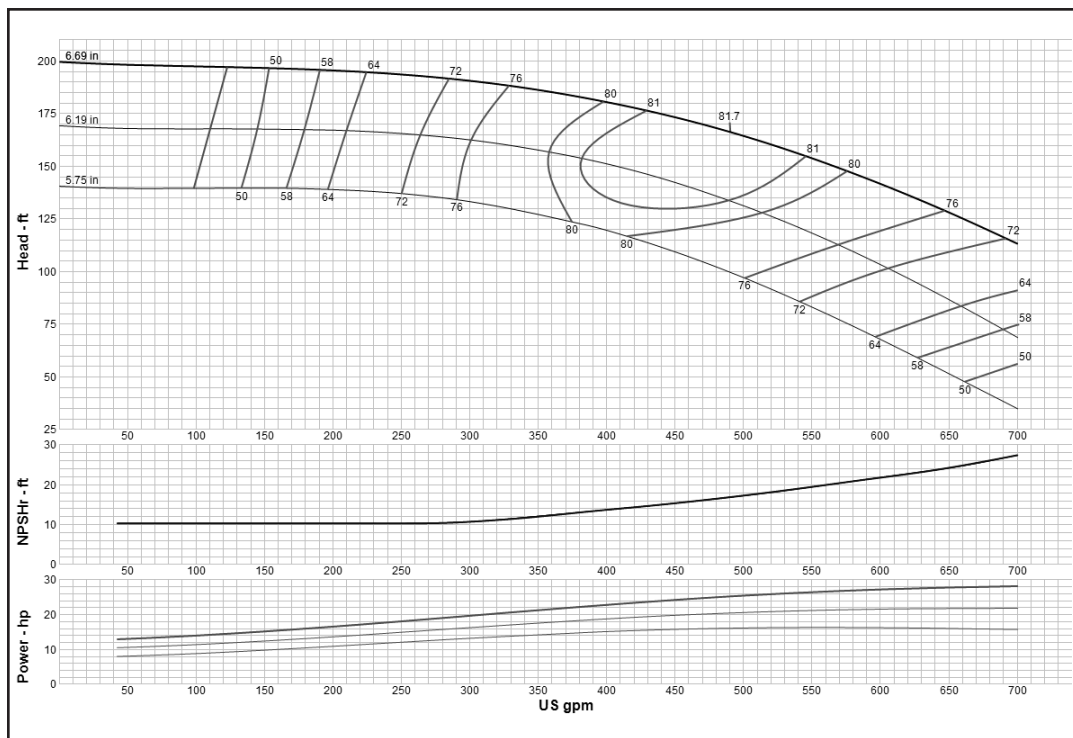
Turbine

MODEL 9TLC (Effective July 1, 2014)



Curve No. E6209TAPC2	
Model	9TLC
RPM	3550
EFFICIENCY CORRECTION	
1-STAGE	-2
2-STAGE	-1
3-STAGE	0
4-STAGE	0
Impeller	ENCLOSED
Ns =	3725
K =	9
Bowl O. D.	9.25 in
Bowl Lateral	0.75
Max. PSI	530
Disch size	5", 6", 8"
TURBINE OPERATIONS	
Lubbock, Texas	
BOWL PERFORMANCE CURVE BASED ON PUMPING CLEAR, NON-AERATED WATER. RATED POINT ONLY IS GUARANTEED. CURVES REPRESENT SINGLE STAGE PERFORMANCE BASED ON TEST OF MULTI-STAGE BOWL ASSEMBLY. EFFICIENCY CORRECTION APPLIES TO HEAD, FLOW AND HORSEPOWER FOR LESSER STAGES.	

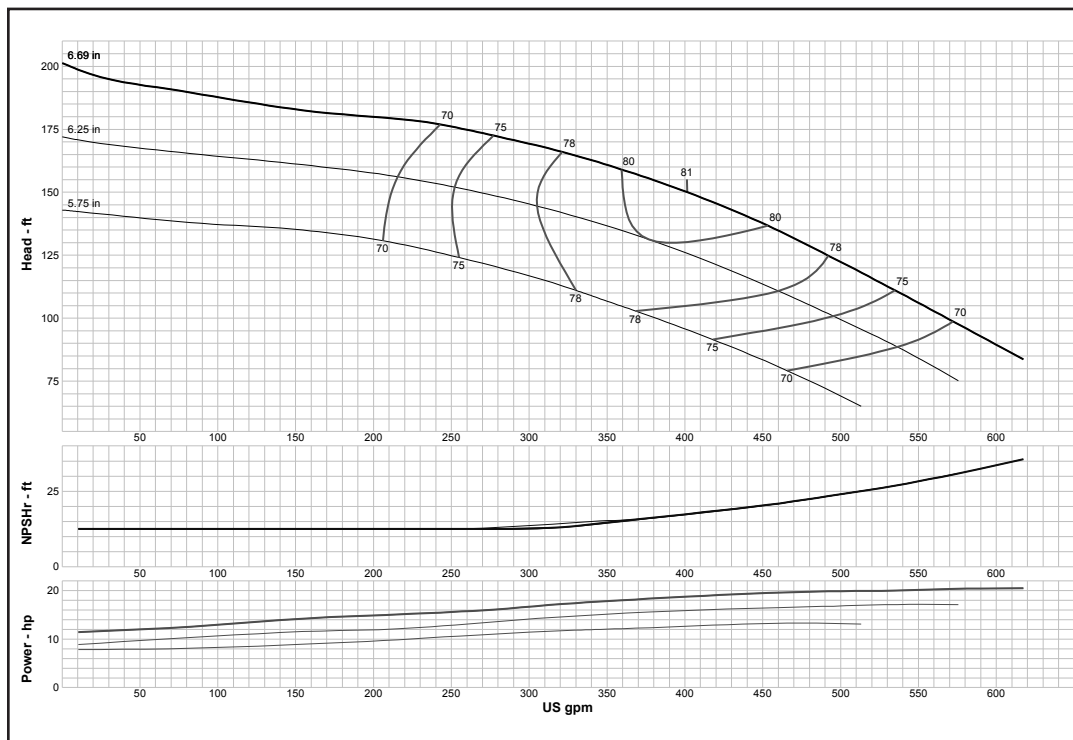
MODEL 9WAHC (Effective September 1, 2017)



Curve No. E6209WAPCO	
Model	9WAHC
RPM	3550
EFFICIENCY CORRECTION	
1-STAGE	-2
2-STAGE	-1
3-STAGE	0
4-STAGE	0
Impeller	ENCLOSED
Ns =	1600
K =	3.75
Bowl O. D.	9.25 in
Bowl Lateral	0.56
Max. PSI	530
Disch size	5", 6", 8"
TURBINE OPERATIONS	
Lubbock, Texas	
BOWL PERFORMANCE CURVE BASED ON PUMPING CLEAR, NON-AERATED WATER. RATED POINT ONLY IS GUARANTEED. CURVES REPRESENT SINGLE STAGE PERFORMANCE BASED ON TEST OF MULTI-STAGE BOWL ASSEMBLY. EFFICIENCY CORRECTION APPLIES TO HEAD, FLOW AND HORSEPOWER FOR LESSER STAGES.	

Turbine

MODEL 9WALC (Effective July 1, 2014)



Curve No. E6209WBPCO

Model 9WALC

RPM 3550

EFFICIENCY CORRECTION

1-STAGE	-2
2-STAGE	-1
3-STAGE	0
4-STAGE	0

Impeller ENCLOSED

Ns = 1660

K = 3.75

Bowl O. D. 9.25 in

Bowl Lateral 0.56

Max. PSI 530

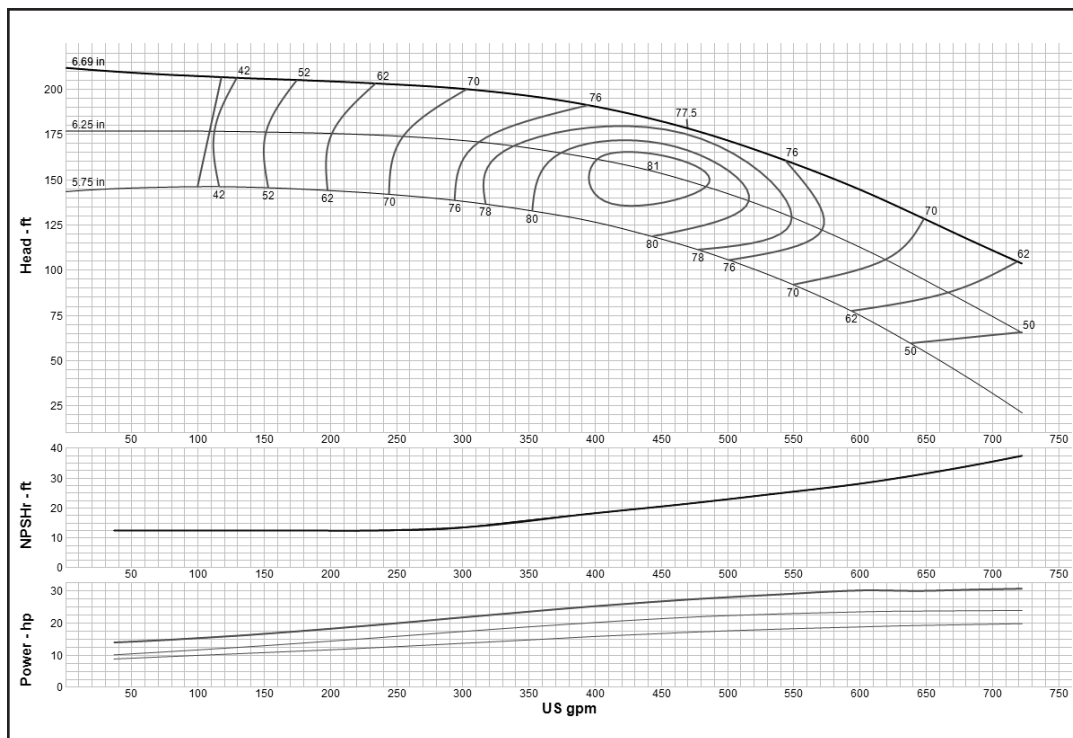
Disch size 5", 6", 8"

TURBINE OPERATIONS

Lubbock, Texas

BOWL PERFORMANCE CURVE BASED ON PUMPING CLEAR, NON-AERATED WATER. RATED POINT ONLY IS GUARANTEED. CURVES REPRESENT SINGLE STAGE PERFORMANCE BASED ON TEST OF MULTI-STAGE BOWL ASSEMBLY. EFFICIENCY CORRECTION APPLIES TO HEAD, FLOW AND HORSEPOWER FOR LESSER STAGES.

MODEL 10RAHC (Effective September 1, 2017)



Curve No. E6210RAPC1

Model 10RAHC

RPM 3550

EFFICIENCY CORRECTION

1-STAGE	-4
2-STAGE	-2
3-STAGE	-1
4-STAGE	0

Impeller ENCLOSED

Ns = 1550

K = 3.75

Bowl O. D. 9.50 in

Bowl Lateral 0.38

Max. PSI 450

Disch size 4", 6", 8"

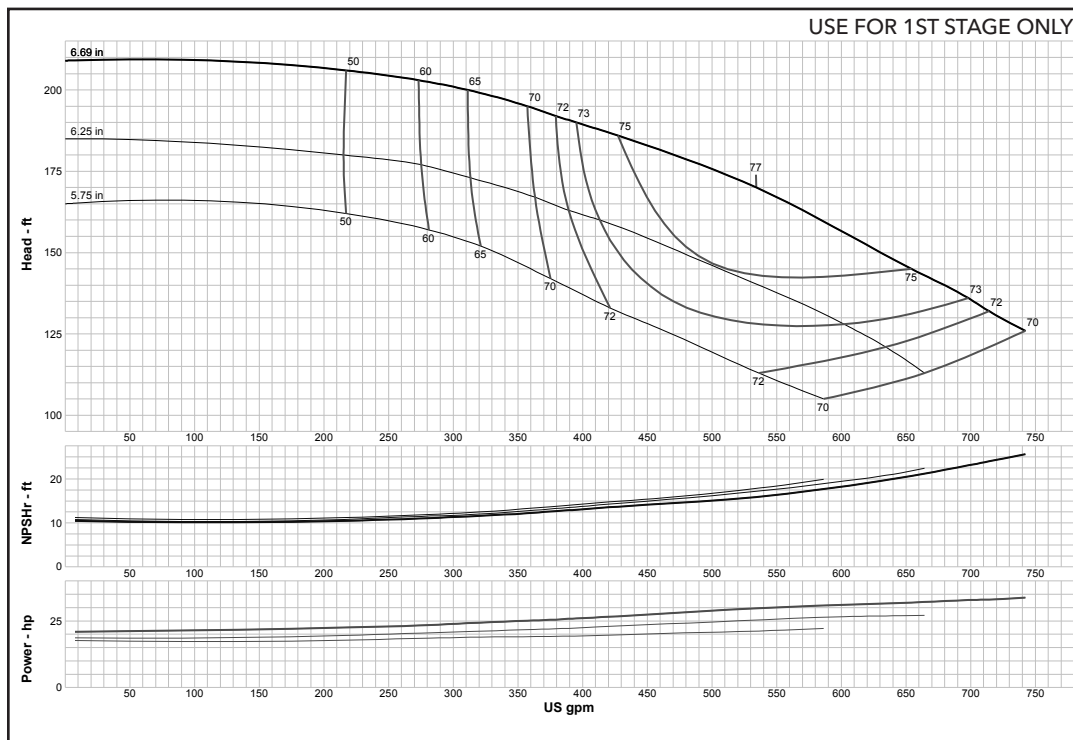
TURBINE OPERATIONS

Lubbock, Texas

BOWL PERFORMANCE CURVE BASED ON PUMPING CLEAR, NON-AERATED WATER. RATED POINT ONLY IS GUARANTEED. CURVES REPRESENT SINGLE STAGE PERFORMANCE BASED ON TEST OF MULTI-STAGE BOWL ASSEMBLY. EFFICIENCY CORRECTION APPLIES TO HEAD, FLOW AND HORSEPOWER FOR LESSER STAGES.

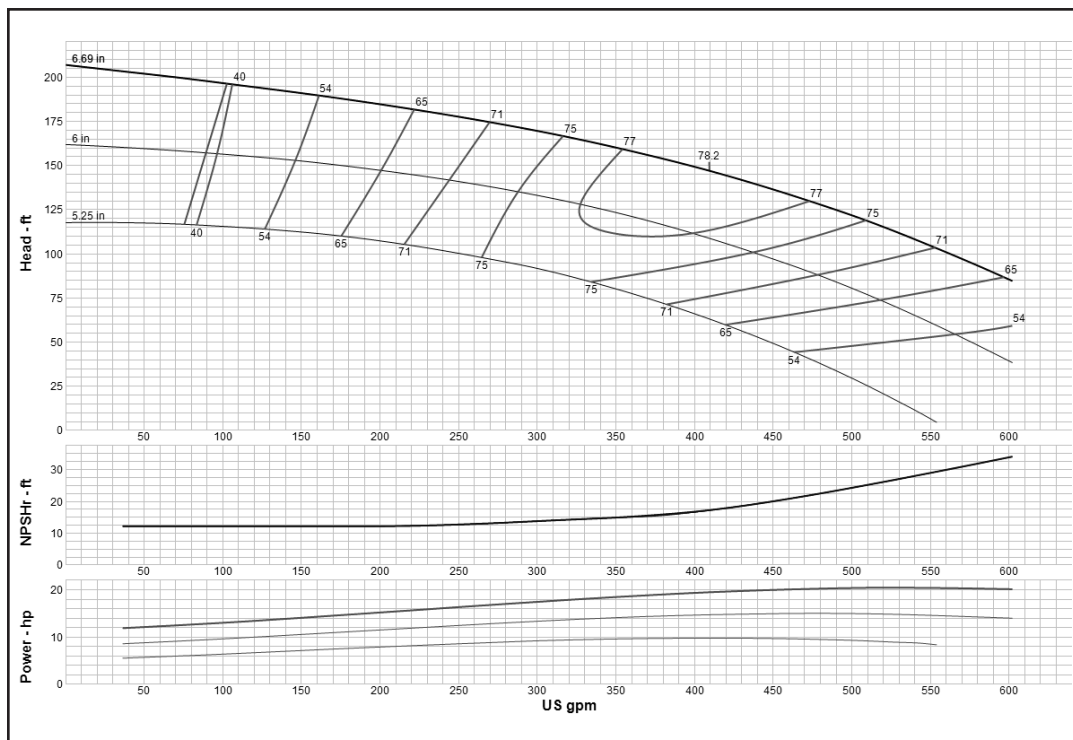
Turbine

MODEL 10RAHXC (Effective July 1, 2014)



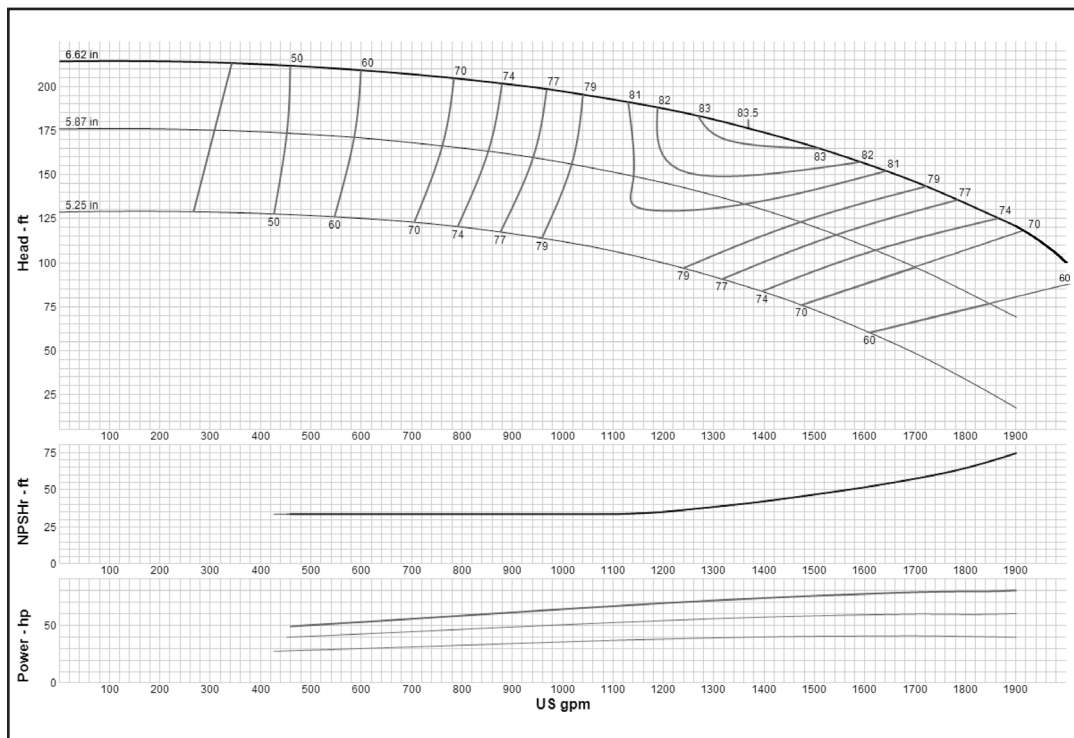
Curve No. E6210ABPC2	
Model	10RAHXC
RPM	3550
EFFICIENCY CORRECTION	
1-STAGE	0
2-STAGE	0
3-STAGE	0
4-STAGE	0
Impeller	ENCLOSED
Ns =	1747
K =	5.5
Bowl O. D.	9.50 in
Bowl Lateral	0.37
Max. PSI	450
Disch size	4", 6", 8"
TURBINE OPERATIONS	
Lubbock, Texas	
BOWL PERFORMANCE CURVE BASED ON PUMPING CLEAR, NON-AERATED WATER. RATED POINT ONLY IS GUARANTEED. CURVES REPRESENT SINGLE STAGE PERFORMANCE BASED ON TEST OF MULTI-STAGE BOWL ASSEMBLY. EFFICIENCY CORRECTION APPLIES TO HEAD, FLOW AND HORSEPOWER FOR LESSER STAGES.	

MODEL 10RALC (Effective September 1, 2017)



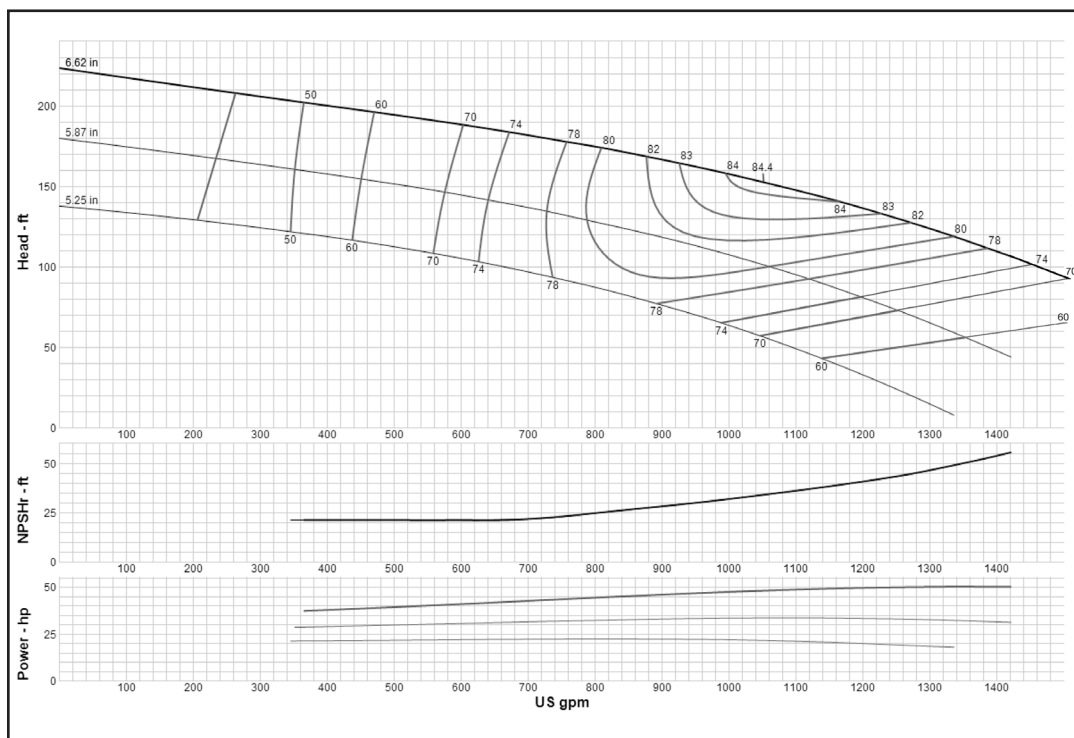
Curve No. E6210RBPC1	
Model	10RALC
RPM	3550
EFFICIENCY CORRECTION	
1-STAGE	-4
2-STAGE	-2
3-STAGE	-1
4-STAGE	0
Impeller	ENCLOSED
Ns =	1625
K =	3.75
Bowl O. D.	9.50 in
Bowl Lateral	0.38
Max. PSI	450
Disch size	4", 6", 8"
TURBINE OPERATIONS	
Lubbock, Texas	
BOWL PERFORMANCE CURVE BASED ON PUMPING CLEAR, NON-AERATED WATER. RATED POINT ONLY IS GUARANTEED. CURVES REPRESENT SINGLE STAGE PERFORMANCE BASED ON TEST OF MULTI-STAGE BOWL ASSEMBLY. EFFICIENCY CORRECTION APPLIES TO HEAD, FLOW AND HORSEPOWER FOR LESSER STAGES.	

MODEL 10RJHC (Effective September 1, 2017)



Curve No. E6410RCPC1	
Model	10RJHC
RPM	3550
EFFICIENCY CORRECTION	
1-STAGE	0
2-STAGE	0
3-STAGE	0
4-STAGE	0
Impeller	ENCLOSED
Ns =	2760
K =	7
Bowl O. D.	9.50 in
Bowl Lateral	0.75
Max. PSI	430
Disch size	6", 8"
TURBINE OPERATIONS	
Lubbock, Texas	
BOWL PERFORMANCE CURVE BASED ON PUMPING CLEAR, NON-AERATED WATER. RATED POINT ONLY IS GUARANTEED. CURVES REPRESENT SINGLE STAGE PERFORMANCE BASED ON TEST OF MULTI-STAGE BOWL ASSEMBLY. EFFICIENCY CORRECTION APPLIES TO HEAD, FLOW AND HORSEPOWER FOR LESSER STAGES.	

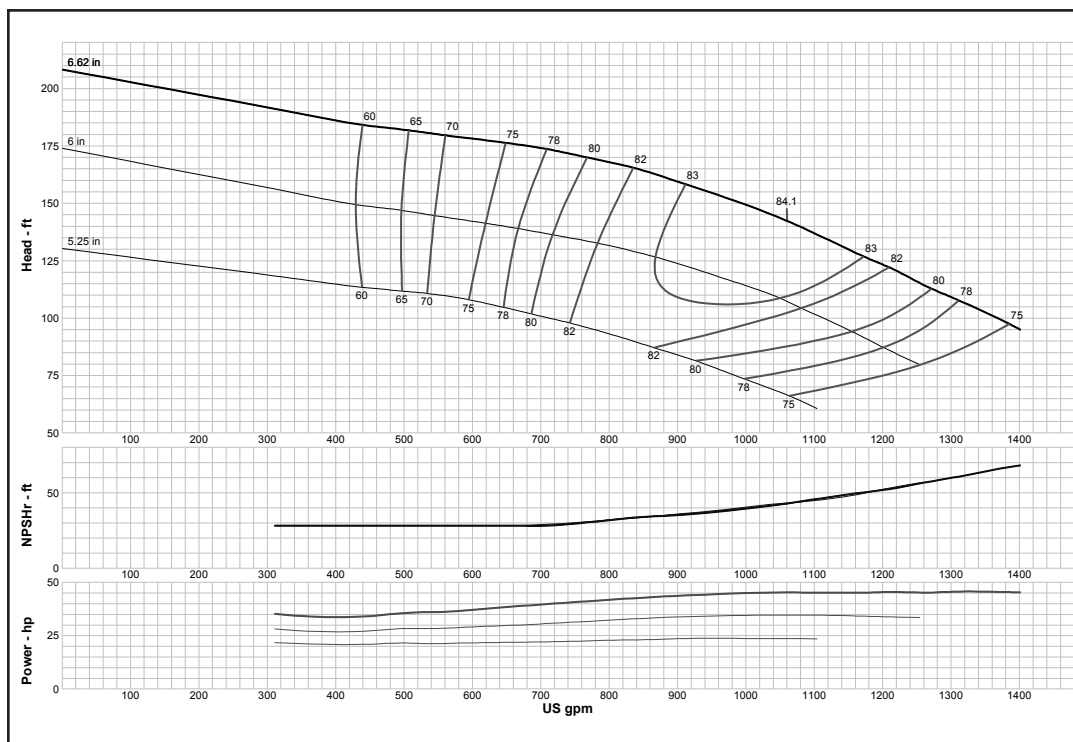
MODEL 10RJLC (Effective September 1, 2017)



Curve No. E6210REPC1	
Model	10RJLC
RPM	3550
EFFICIENCY CORRECTION	
1-STAGE	0
2-STAGE	0
3-STAGE	0
4-STAGE	0
Impeller	ENCLOSED
Ns =	2760
K =	7
Bowl O. D.	9.50 in
Bowl Lateral	0.75
Max. PSI	430
Disch size	6", 8"
TURBINE OPERATIONS	
Lubbock, Texas	
BOWL PERFORMANCE CURVE BASED ON PUMPING CLEAR, NON-AERATED WATER. RATED POINT ONLY IS GUARANTEED. CURVES REPRESENT SINGLE STAGE PERFORMANCE BASED ON TEST OF MULTI-STAGE BOWL ASSEMBLY. EFFICIENCY CORRECTION APPLIES TO HEAD, FLOW AND HORSEPOWER FOR LESSER STAGES.	

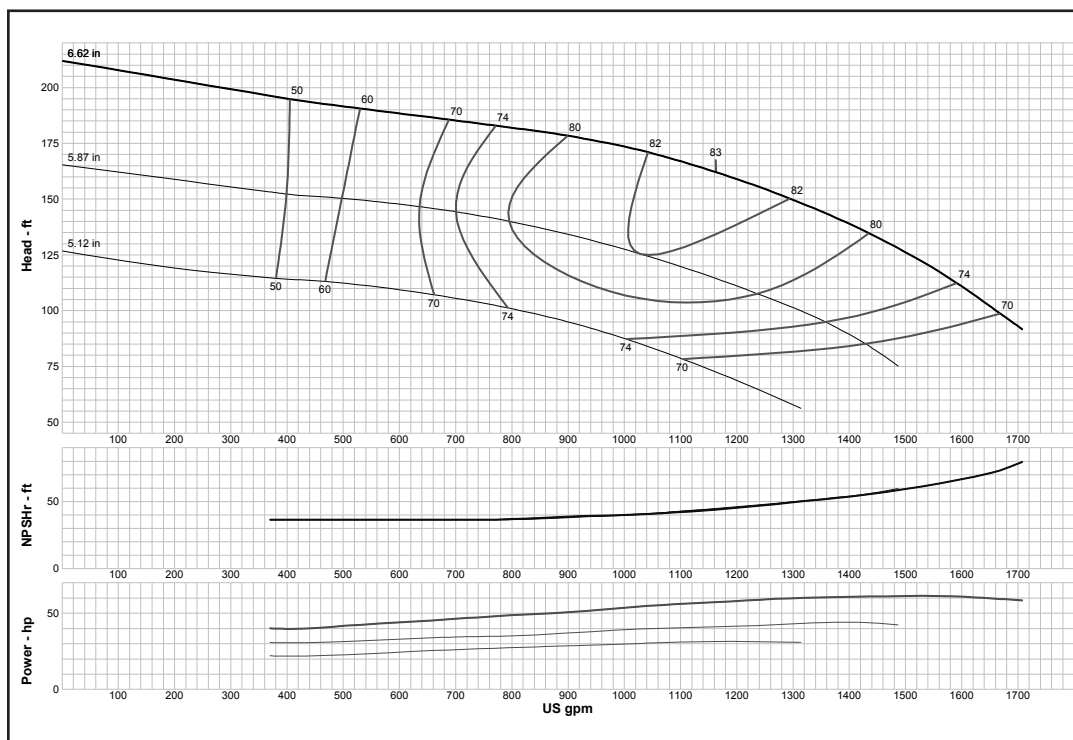
Turbine

MODEL 10RJLO (Effective July 1, 2014)



Curve No. E6210RFPC1	
Model	10RJLO
RPM	3550
EFFICIENCY CORRECTION	
1-STAGE	0
2-STAGE	0
3-STAGE	0
4-STAGE	0
Impeller	OPEN
Ns =	2760
K =	9.5
Bowl O. D.	9.50 in
Bowl Lateral	0.75
Max. PSI	430
Disch size	6", 8"
TURBINE OPERATIONS	
Lubbock, Texas	
BOWL PERFORMANCE CURVE BASED ON PUMPING CLEAR, NON-AERATED WATER. RATED POINT ONLY IS GUARANTEED. CURVES REPRESENT SINGLE STAGE PERFORMANCE BASED ON TEST OF MULTI-STAGE BOWL ASSEMBLY. EFFICIENCY CORRECTION APPLIES TO HEAD, FLOW AND HORSEPOWER FOR LESSER STAGES.	

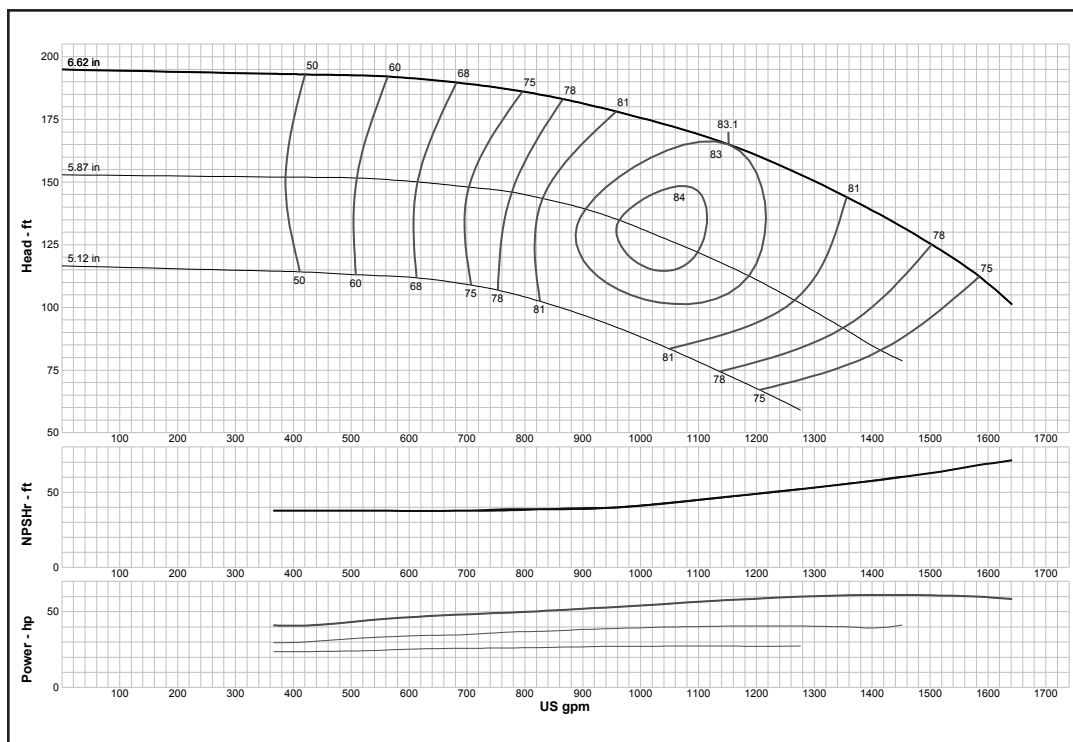
MODEL 10RJMC (Effective July 1, 2014)



Curve No. E6210RGPC1	
Model	10RJMC
RPM	3550
EFFICIENCY CORRECTION	
1-STAGE	0
2-STAGE	0
3-STAGE	0
4-STAGE	0
Impeller	ENCLOSED
Ns =	2610
K =	7
Bowl O. D.	9.50 in
Bowl Lateral	0.75
Max. PSI	430
Disch size	6", 8"
TURBINE OPERATIONS	
Lubbock, Texas	
BOWL PERFORMANCE CURVE BASED ON PUMPING CLEAR, NON-AERATED WATER. RATED POINT ONLY IS GUARANTEED. CURVES REPRESENT SINGLE STAGE PERFORMANCE BASED ON TEST OF MULTI-STAGE BOWL ASSEMBLY. EFFICIENCY CORRECTION APPLIES TO HEAD, FLOW AND HORSEPOWER FOR LESSER STAGES.	

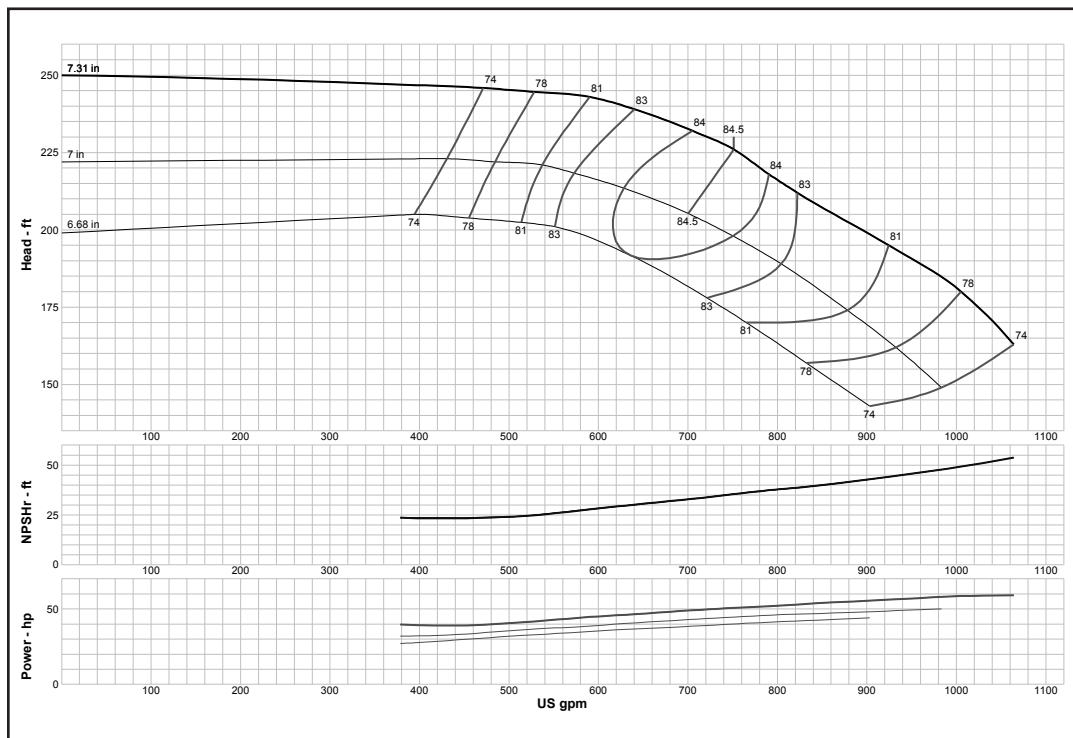
Turbine

MODEL 10RJMO (Effective July 1, 2014)



Curve No. E6210RHPC1	
Model	10RJMO
RPM	3550
EFFICIENCY CORRECTION	
1-STAGE	0
2-STAGE	0
3-STAGE	0
4-STAGE	0
Impeller	OPEN
Ns =	2565
K =	9.5
Bowl O. D.	9.50 in
Bowl Lateral	0.75
Max. PSI	430
Disch size	6", 8"
TURBINE OPERATIONS	
Lubbock, Texas	
BOWL PERFORMANCE CURVE BASED ON PUMPING CLEAR, NON-AERATED WATER. RATED POINT ONLY IS GUARANTEED. CURVES REPRESENT SINGLE STAGE PERFORMANCE BASED ON TEST OF MULTI-STAGE BOWL ASSEMBLY. EFFICIENCY CORRECTION APPLIES TO HEAD, FLOW AND HORSEPOWER FOR LESSER STAGES.	

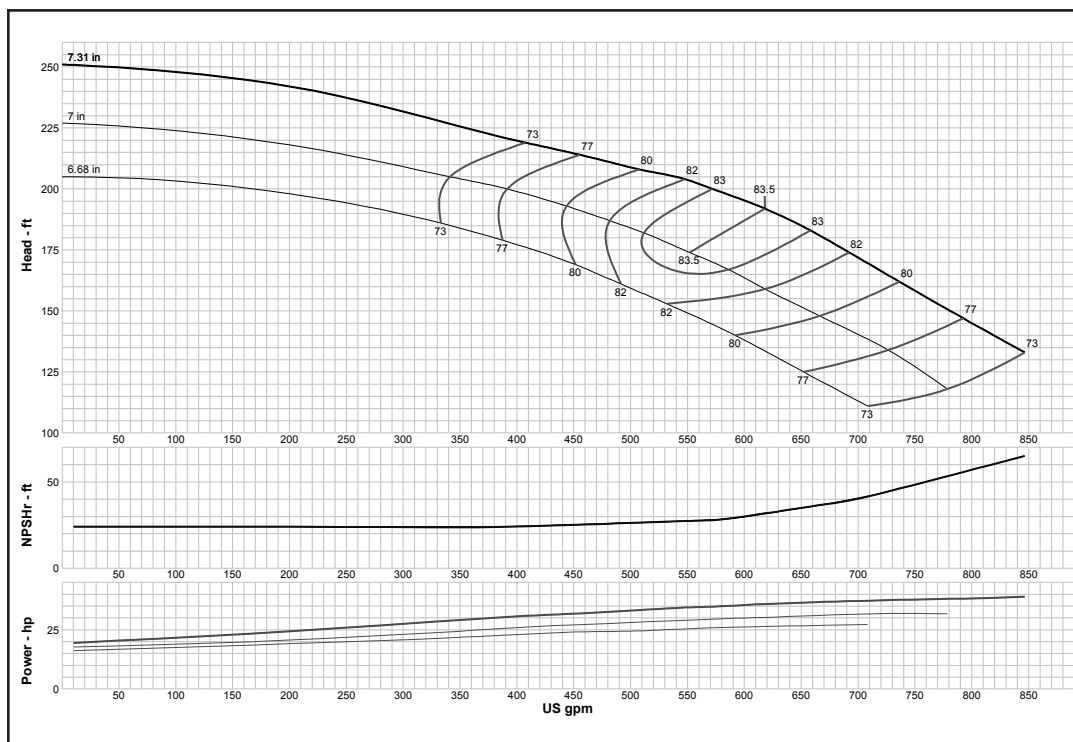
MODEL 10WAHC (Effective July 1, 2014)



Curve No. E6210WAPC1	
Model	10WAHC
RPM	3550
EFFICIENCY CORRECTION	
1-STAGE	-3
2-STAGE	-2
3-STAGE	-1
4-STAGE	0
Impeller	ENCLOSED
Ns =	1695
K =	4.65
Bowl O. D.	9.50 in
Bowl Lateral	0.63
Max. PSI	375
Disch size	4", 6", 8"
TURBINE OPERATIONS	
Lubbock, Texas	
BOWL PERFORMANCE CURVE BASED ON PUMPING CLEAR, NON-AERATED WATER. RATED POINT ONLY IS GUARANTEED. CURVES REPRESENT SINGLE STAGE PERFORMANCE BASED ON TEST OF MULTI-STAGE BOWL ASSEMBLY. EFFICIENCY CORRECTION APPLIES TO HEAD, FLOW AND HORSEPOWER FOR LESSER STAGES.	

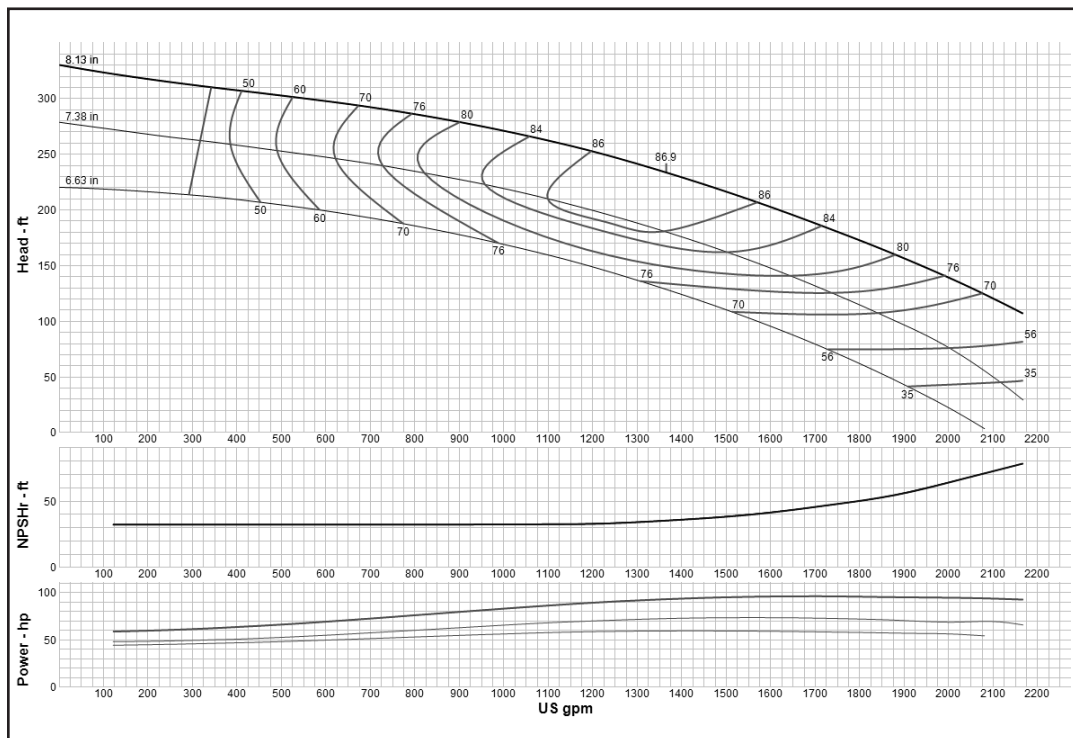
Turbine

MODEL 10WALC (Effective July 1, 2014)



Curve No. E6210WBPC2	
Model	10WALC
RPM	3550
EFFICIENCY CORRECTION	
1-STAGE	-3
2-STAGE	-2
3-STAGE	-1
4-STAGE	0
Impeller	ENCLOSED
Ns =	1700
K =	4.6
Bowl O. D.	9.50 in
Bowl Lateral	0.63
Max. PSI	375
Disch size	4", 6", 8"
TURBINE OPERATIONS	
Lubbock, Texas	
BOWL PERFORMANCE CURVE BASED ON PUMPING CLEAR, NON-AERATED WATER. RATED POINT ONLY IS GUARANTEED. CURVES REPRESENT SINGLE STAGE PERFORMANCE BASED ON TEST OF MULTI-STAGE BOWL ASSEMBLY. EFFICIENCY CORRECTION APPLIES TO HEAD, FLOW AND HORSEPOWER FOR LESSER STAGES.	

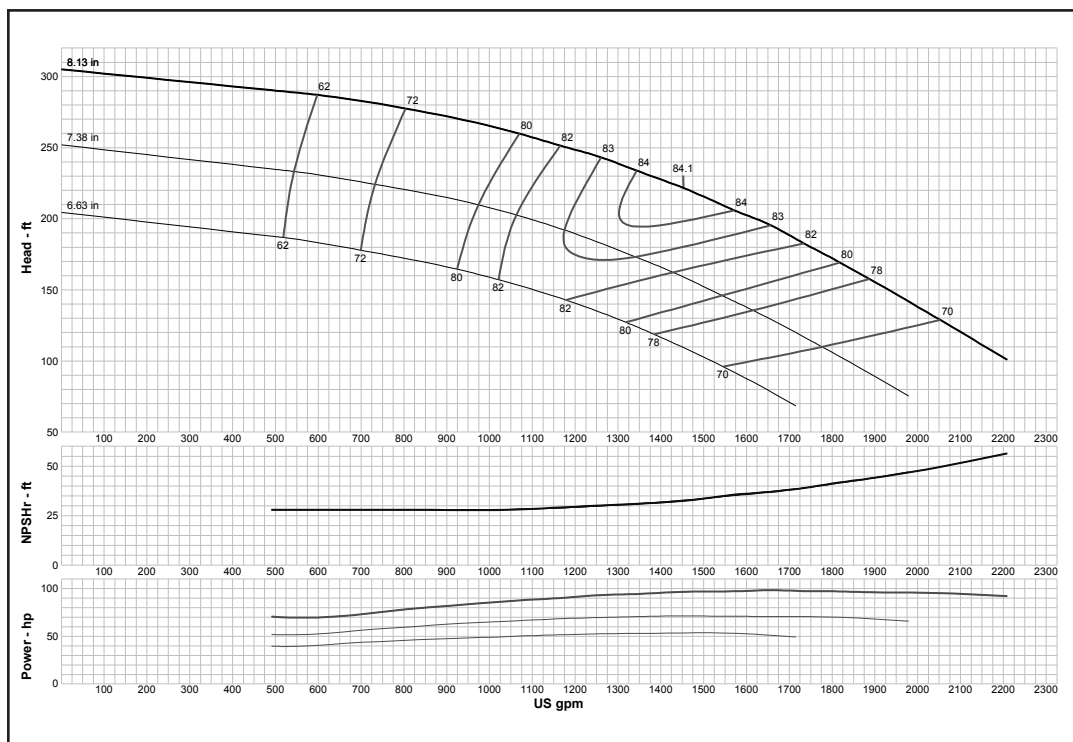
MODEL 11CLC (Effective September 1, 2017)



Curve No. E6211CFPC1	
Model	11CLC
RPM	3550
EFFICIENCY CORRECTION	
1-STAGE	-1.5
2-STAGE	-1
3-STAGE	-0.5
4-STAGE	0
Impeller	ENCLOSED
Ns =	2230
K =	7
Bowl O. D.	11.00 in
Bowl Lateral	0.75
Max. PSI	380
Disch size	6", 8", 10"
TURBINE OPERATIONS	
Lubbock, Texas	
BOWL PERFORMANCE CURVE BASED ON PUMPING CLEAR, NON-AERATED WATER. RATED POINT ONLY IS GUARANTEED. CURVES REPRESENT SINGLE STAGE PERFORMANCE BASED ON TEST OF MULTI-STAGE BOWL ASSEMBLY. EFFICIENCY CORRECTION APPLIES TO HEAD, FLOW AND HORSEPOWER FOR LESSER STAGES.	

Turbine

MODEL 11CLO (Effective July 1, 2014)



Curve No. E6411CJPCO

Model 11CLO

RPM 3550

EFFICIENCY CORRECTION

1-STAGE	-1.5
2-STAGE	-1
3-STAGE	-0.5
4-STAGE	0

Impeller OPEN

Ns = 2230

K = 9.1

Bowl O. D. 11.00 in

Bowl Lateral 0.88

Max. PSI 380

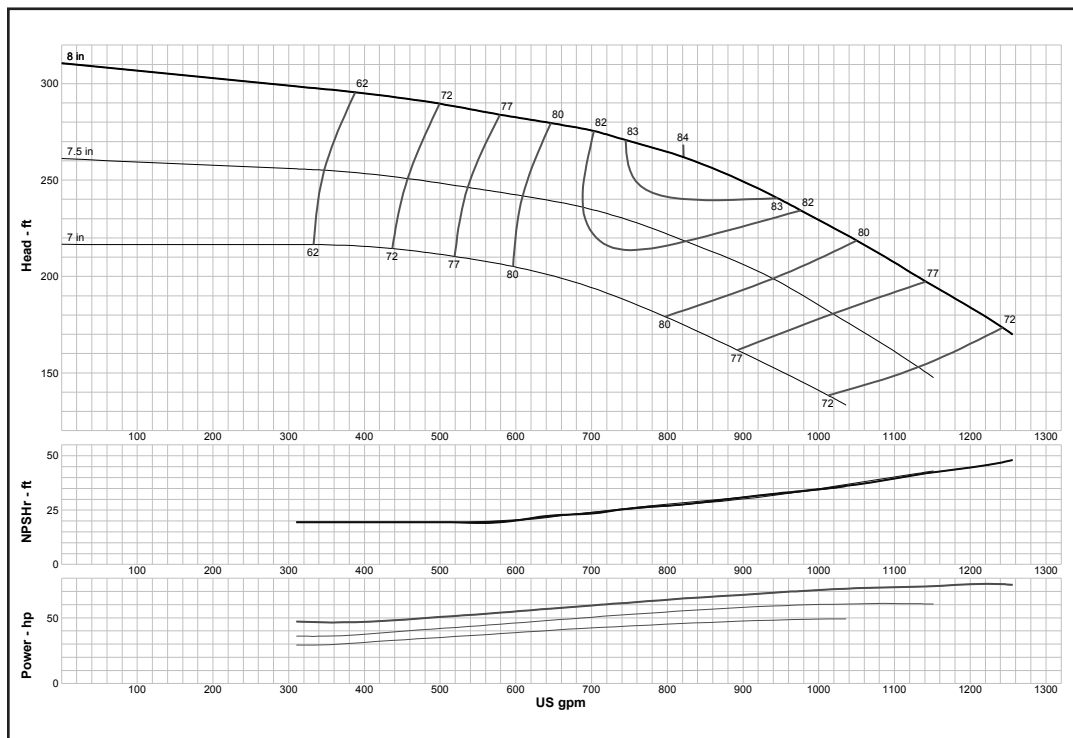
Disch size 6", 8", 10"

TURBINE OPERATIONS

Lubbock, Texas

BOWL PERFORMANCE CURVE BASED ON PUMPING CLEAR, NON-AERATED WATER. RATED POINT ONLY IS GUARANTEED. CURVES REPRESENT SINGLE STAGE PERFORMANCE BASED ON TEST OF MULTI-STAGE BOWL ASSEMBLY. EFFICIENCY CORRECTION APPLIES TO HEAD, FLOW AND HORSEPOWER FOR LESSER STAGES.

MODEL 11RAHC (Effective July 1, 2014)



Curve No. E6211RAPC1

Model 11RAHC

RPM 3550

EFFICIENCY CORRECTION

1-STAGE	-5
2-STAGE	-3
3-STAGE	-1
4-STAGE	0

Impeller ENCLOSED

Ns = 1560

K = 5.3

Bowl O. D. 11.60 in

Bowl Lateral 0.38

Max. PSI 400

Disch size 6", 8", 10"

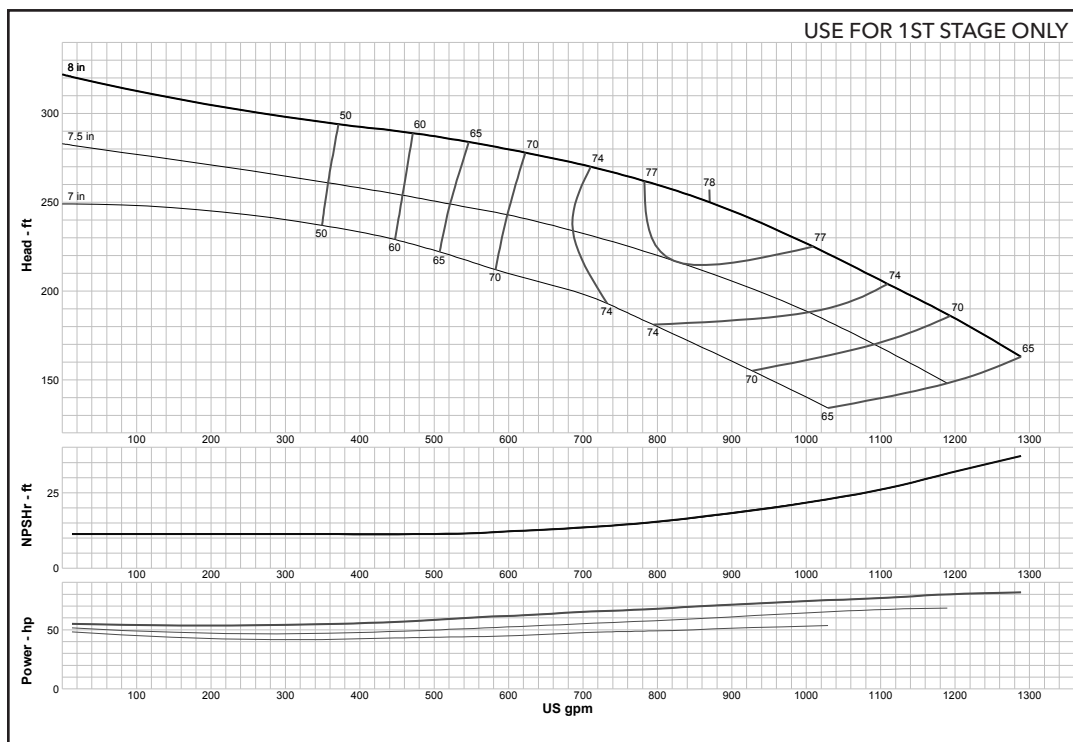
TURBINE OPERATIONS

Lubbock, Texas

BOWL PERFORMANCE CURVE BASED ON PUMPING CLEAR, NON-AERATED WATER. RATED POINT ONLY IS GUARANTEED. CURVES REPRESENT SINGLE STAGE PERFORMANCE BASED ON TEST OF MULTI-STAGE BOWL ASSEMBLY. EFFICIENCY CORRECTION APPLIES TO HEAD, FLOW AND HORSEPOWER FOR LESSER STAGES.

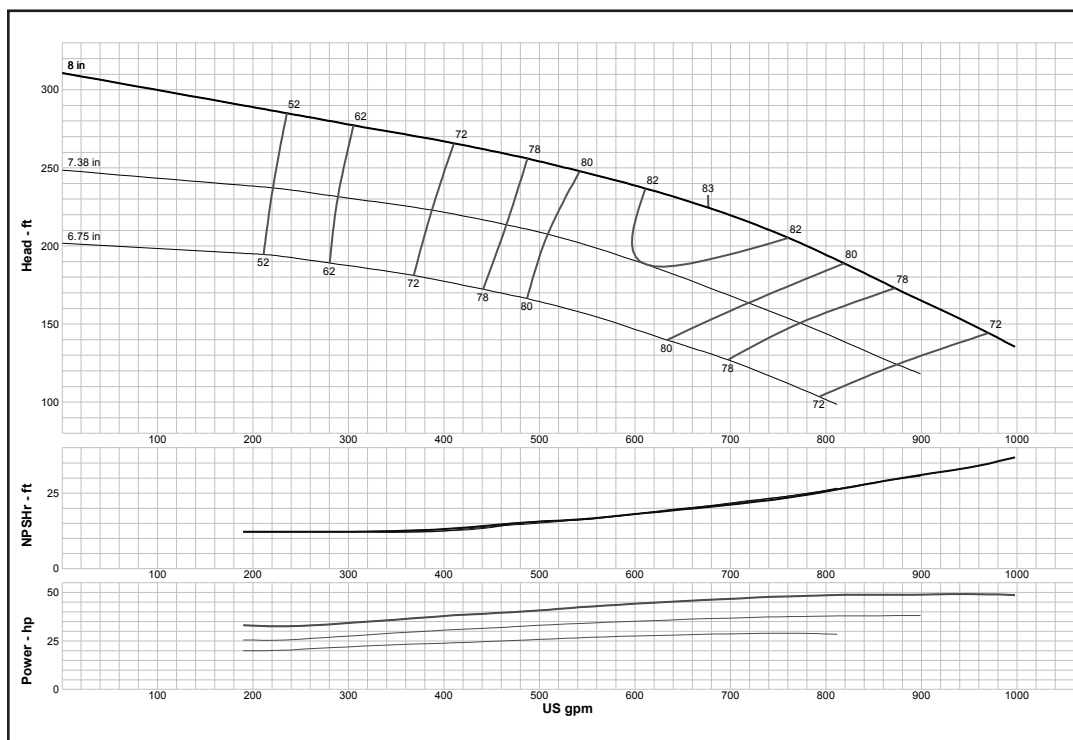
Turbine

MODEL 11RAHXC (Effective July 1, 2014)



Curve No. E6211ABPC2	
Model	11RAHXC
RPM	3550
EFFICIENCY CORRECTION	
1-STAGE	0
2-STAGE	0
3-STAGE	0
4-STAGE	0
Impeller	ENCLOSED
Ns =	1663
K =	7.9
Bowl O. D.	11.60 in
Bowl Lateral	0.37
Max. PSI	400
Disch size	6", 8", 10"
TURBINE OPERATIONS	
Lubbock, Texas	
BOWL PERFORMANCE CURVE BASED ON PUMPING CLEAR, NON-AERATED WATER. RATED POINT ONLY IS GUARANTEED. CURVES REPRESENT SINGLE STAGE PERFORMANCE BASED ON TEST OF MULTI-STAGE BOWL ASSEMBLY. EFFICIENCY CORRECTION APPLIES TO HEAD, FLOW AND HORSEPOWER FOR LESSER STAGES.	

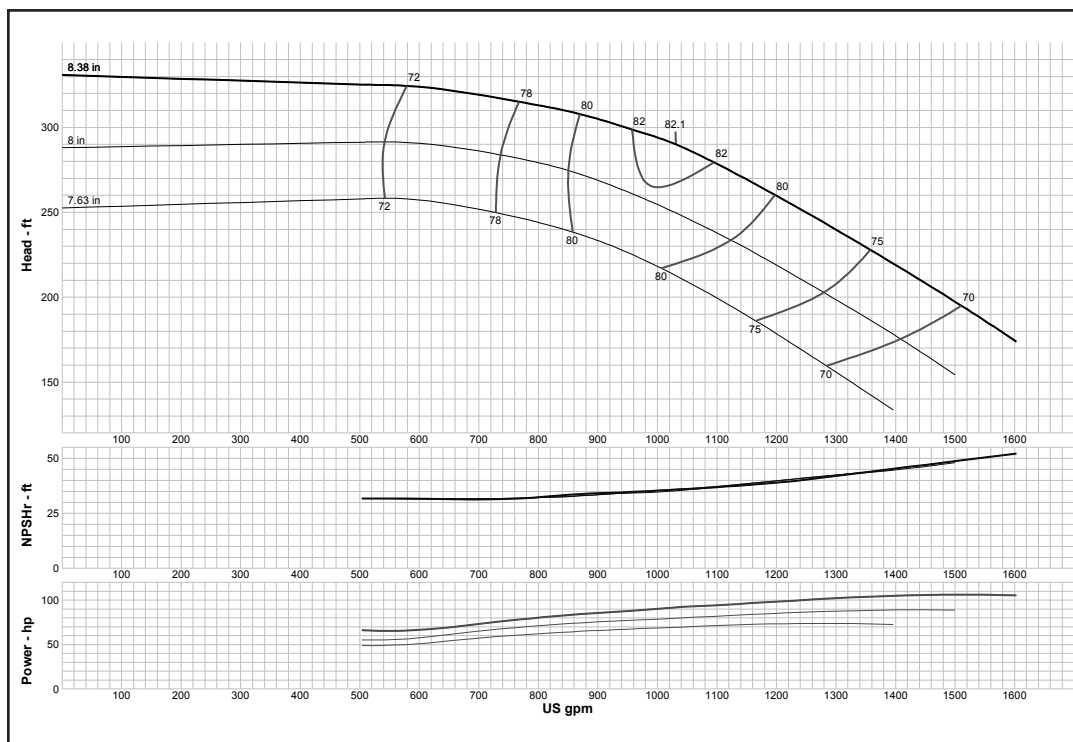
MODEL 11RALC (Effective July 1, 2014)



Curve No. E6211RBPC1	
Model	11RALC
RPM	3550
EFFICIENCY CORRECTION	
1-STAGE	-5
2-STAGE	-3
3-STAGE	-1
4-STAGE	0
Impeller	ENCLOSED
Ns =	1585
K =	5.3
Bowl O. D.	11.60 in
Bowl Lateral	0.38
Max. PSI	400
Disch size	6", 8", 10"
TURBINE OPERATIONS	
Lubbock, Texas	
BOWL PERFORMANCE CURVE BASED ON PUMPING CLEAR, NON-AERATED WATER. RATED POINT ONLY IS GUARANTEED. CURVES REPRESENT SINGLE STAGE PERFORMANCE BASED ON TEST OF MULTI-STAGE BOWL ASSEMBLY. EFFICIENCY CORRECTION APPLIES TO HEAD, FLOW AND HORSEPOWER FOR LESSER STAGES.	

Turbine

MODEL 11WAHC (Effective July 1, 2014)



Curve No. E6211WAPCO

Model 11WAHC

RPM 3550

EFFICIENCY CORRECTION

1-STAGE	-3
2-STAGE	-2
3-STAGE	-1
4-STAGE	0

Impeller ENCLOSED

Ns = 1750

K = 6

Bowl O. D. 11.00 in

Bowl Lateral 0.75

Max. PSI 380

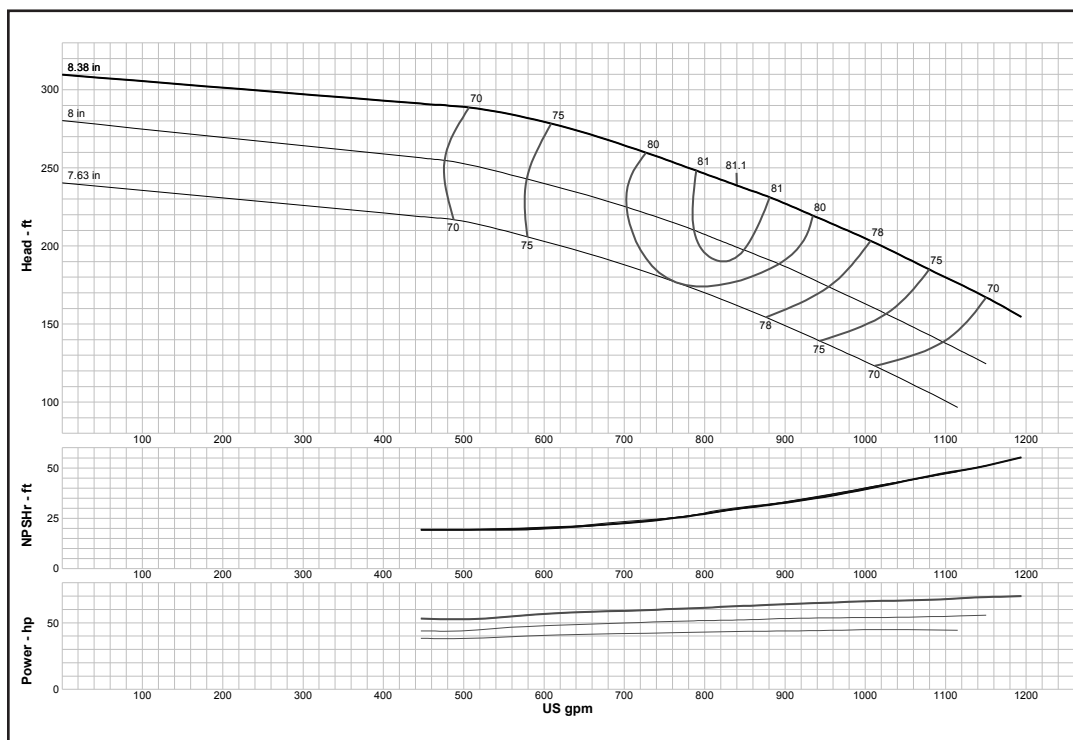
Disch size 5", 6", 8"

TURBINE OPERATIONS

Lubbock, Texas

BOWL PERFORMANCE CURVE BASED ON PUMPING CLEAR, NON-AERATED WATER. RATED POINT ONLY IS GUARANTEED. CURVES REPRESENT SINGLE STAGE PERFORMANCE BASED ON TEST OF MULTI-STAGE BOWL ASSEMBLY. EFFICIENCY CORRECTION APPLIES TO HEAD, FLOW AND HORSEPOWER FOR LESSER STAGES.

MODEL 11WALC (Effective July 1, 2014)



Curve No. E6211WBPCO

Model 11WALC

RPM 3550

EFFICIENCY CORRECTION

1-STAGE	-3
2-STAGE	-2
3-STAGE	-1
4-STAGE	0

Impeller ENCLOSED

Ns = 1650

K = 6

Bowl O. D. 11.00 in

Bowl Lateral 0.75

Max. PSI 380

Disch size 5", 6", 8"

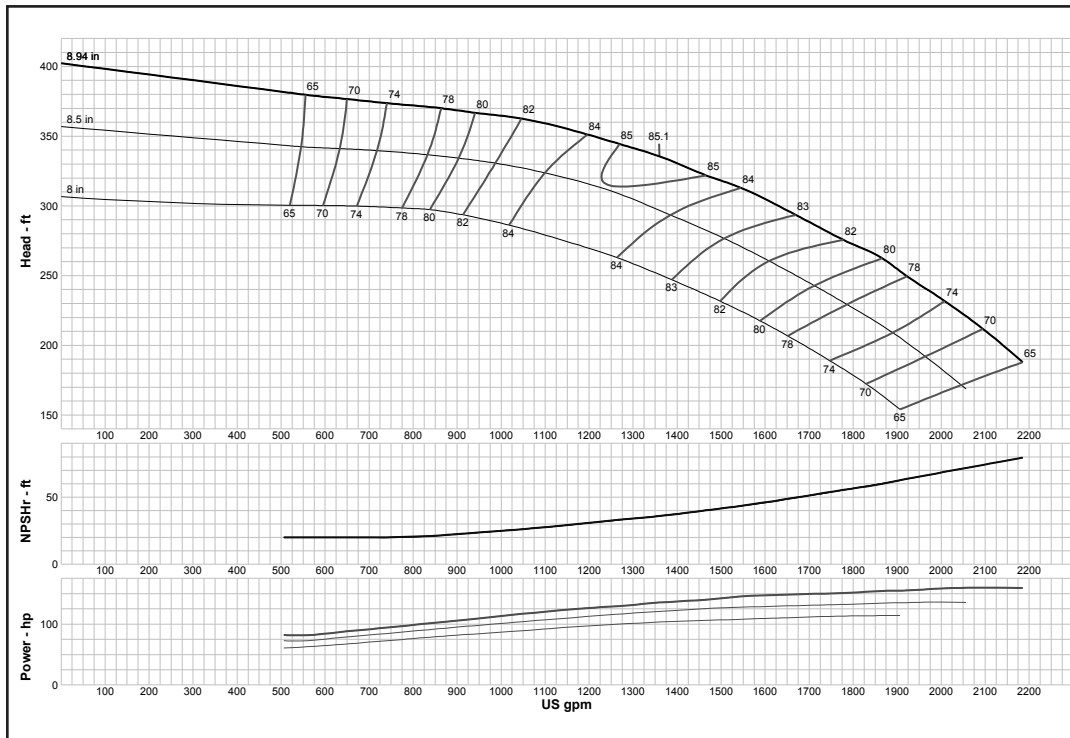
TURBINE OPERATIONS

Lubbock, Texas

BOWL PERFORMANCE CURVE BASED ON PUMPING CLEAR, NON-AERATED WATER. RATED POINT ONLY IS GUARANTEED. CURVES REPRESENT SINGLE STAGE PERFORMANCE BASED ON TEST OF MULTI-STAGE BOWL ASSEMBLY. EFFICIENCY CORRECTION APPLIES TO HEAD, FLOW AND HORSEPOWER FOR LESSER STAGES.

Turbine

MODEL 12WAHC (Effective July 1, 2014)



Curve No. E60412WAPCO

Model 12WAHC

RPM 3550

EFFICIENCY CORRECTION

1-STAGE	-3
2-STAGE	-2
3-STAGE	-1
4-STAGE	-0.5

Impeller ENCLOSED

Ns = 1660

K = 7

Bowl O. D. 11.60 in

Bowl Lateral 0.75

Max. PSI 390

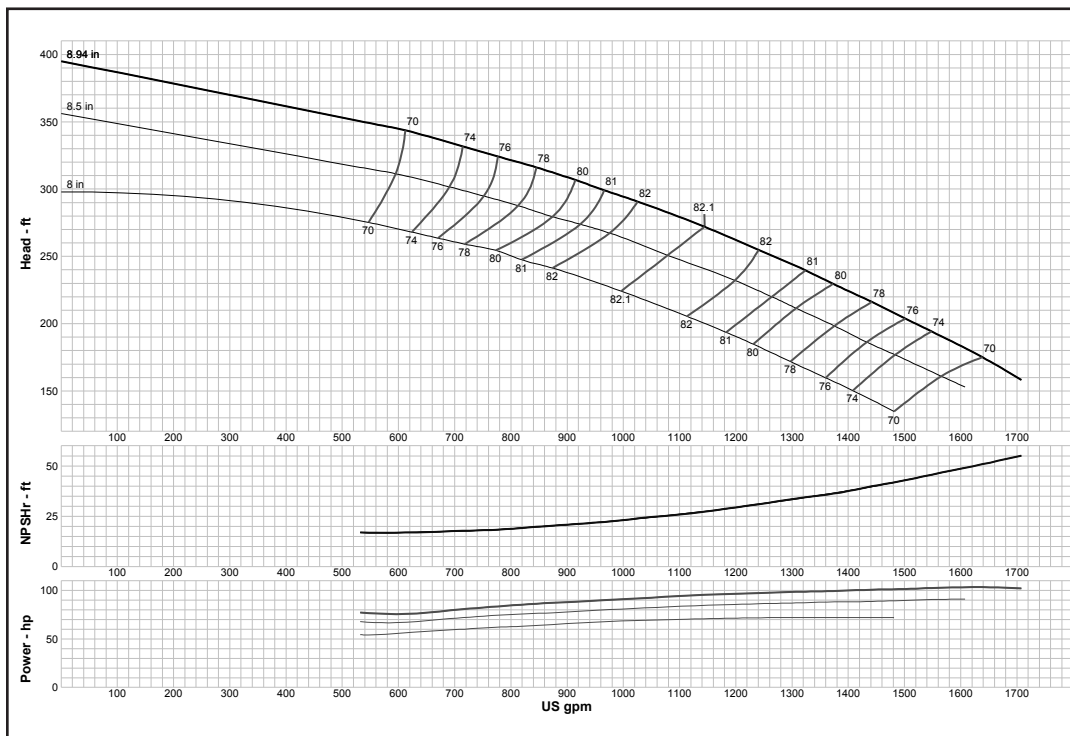
Disch size 6", 8", 10"

TURBINE OPERATIONS

Lubbock, Texas

BOWL PERFORMANCE CURVE BASED ON PUMPING CLEAR, NON-AERATED WATER. RATED POINT ONLY IS GUARANTEED. CURVES REPRESENT SINGLE STAGE PERFORMANCE BASED ON TEST OF MULTI-STAGE BOWL ASSEMBLY. EFFICIENCY CORRECTION APPLIES TO HEAD, FLOW AND HORSEPOWER FOR LESSER STAGES.

MODEL 12WALC (Effective July 1, 2014)



Curve No. E60412WBPCO

Model 12WALC

RPM 3550

EFFICIENCY CORRECTION

1-STAGE	-3
2-STAGE	-2
3-STAGE	-1
4-STAGE	-0.5

Impeller ENCLOSED

Ns = 1725

K = 7

Bowl O. D. 11.60 in

Bowl Lateral 0.75

Max. PSI 390

Disch size 6", 8", 10"

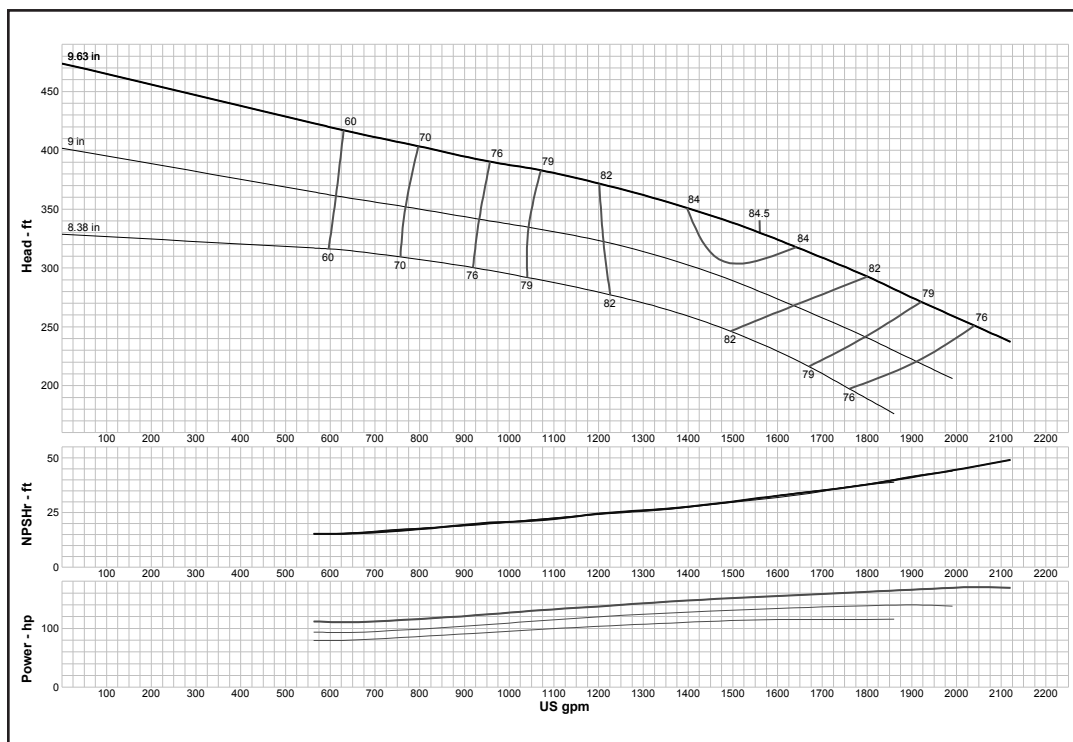
TURBINE OPERATIONS

Lubbock, Texas

BOWL PERFORMANCE CURVE BASED ON PUMPING CLEAR, NON-AERATED WATER. RATED POINT ONLY IS GUARANTEED. CURVES REPRESENT SINGLE STAGE PERFORMANCE BASED ON TEST OF MULTI-STAGE BOWL ASSEMBLY. EFFICIENCY CORRECTION APPLIES TO HEAD, FLOW AND HORSEPOWER FOR LESSER STAGES.

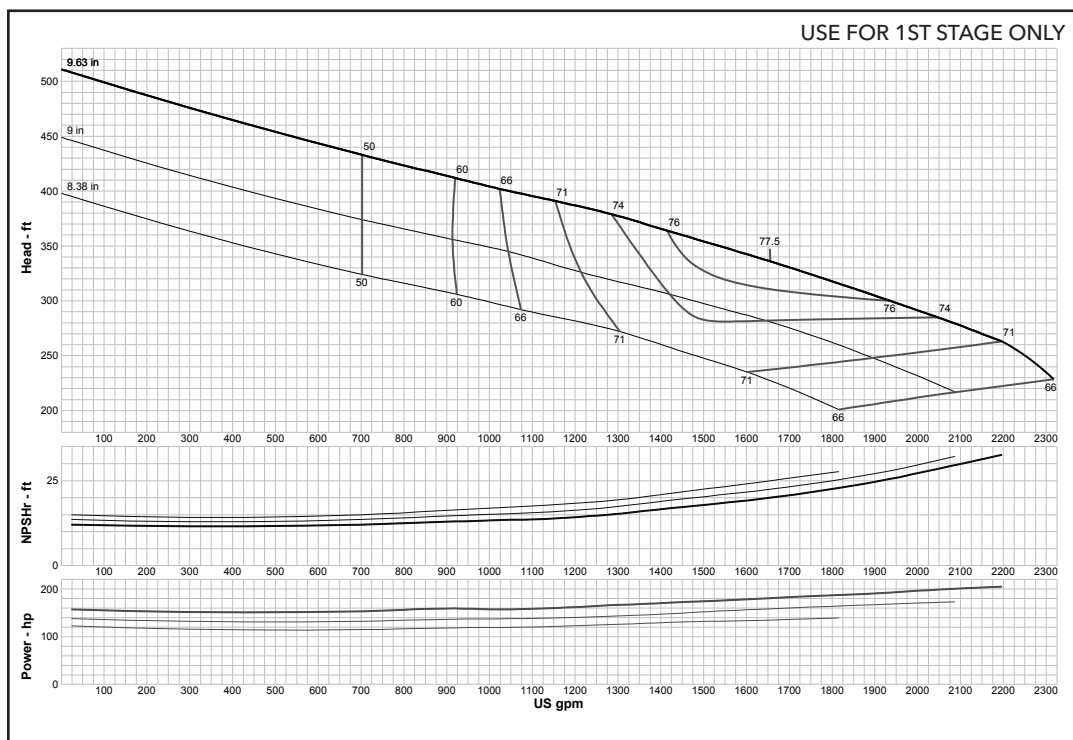
Turbine

MODEL 13RAHC (Effective July 1, 2014)



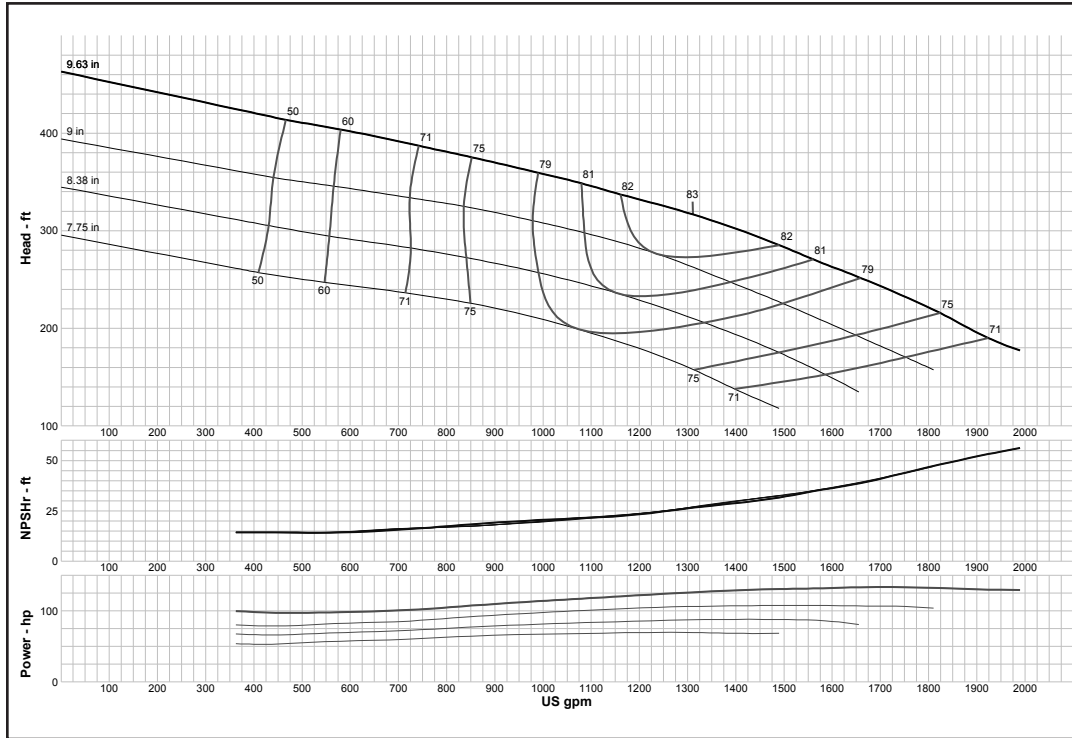
Curve No. E6213RAPC1	
Model	13RAHC
RPM	3550
EFFICIENCY CORRECTION	
1-STAGE	-5
2-STAGE	-2
3-STAGE	-1
4-STAGE	0
Impeller	ENCLOSED
Ns =	1760
K =	7.9
Bowl O. D.	13.38 in
Bowl Lateral	0.5
Max. PSI	430
Disch size	8", 10", 12"
TURBINE OPERATIONS	
Lubbock, Texas	
BOWL PERFORMANCE CURVE BASED ON PUMPING CLEAR, NON-AERATED WATER. RATED POINT ONLY IS GUARANTEED. CURVES REPRESENT SINGLE STAGE PERFORMANCE BASED ON TEST OF MULTI-STAGE BOWL ASSEMBLY. EFFICIENCY CORRECTION APPLIES TO HEAD, FLOW AND HORSEPOWER FOR LESSER STAGES.	

MODEL 13RAHXC (Effective July 1, 2014)



Curve No. E6213ABPC2	
Model	13RAHXC
RPM	3550
EFFICIENCY CORRECTION	
1-STAGE	0
2-STAGE	0
3-STAGE	0
4-STAGE	0
Impeller	ENCLOSED
Ns =	1843
K =	10
Bowl O. D.	13.38 in
Bowl Lateral	0.5
Max. PSI	430
Disch size	8", 10", 12"
TURBINE OPERATIONS	
Lubbock, Texas	
BOWL PERFORMANCE CURVE BASED ON PUMPING CLEAR, NON-AERATED WATER. RATED POINT ONLY IS GUARANTEED. CURVES REPRESENT SINGLE STAGE PERFORMANCE BASED ON TEST OF MULTI-STAGE BOWL ASSEMBLY. EFFICIENCY CORRECTION APPLIES TO HEAD, FLOW AND HORSEPOWER FOR LESSER STAGES.	

MODEL 13RALC *(Effective July 1, 2014)*



Curve No. E6213RBPC1	
Model	13RALC
RPM	3550
EFFICIENCY CORRECTION	
1-STAGE	-5
2-STAGE	-2
3-STAGE	-1
4-STAGE	0
Impeller	ENCLOSED
Ns =	1690
K =	7.9
Bowl O. D.	13.38 in
Bowl Lateral	0.5
Max. PSI	430
Disch size	8", 10", 12"
TURBINE OPERATIONS	
Lubbock, Texas	
BOWL PERFORMANCE CURVE BASED ON PUMPING CLEAR, NON-AERATED WATER. RATED POINT ONLY IS GUARANTEED. CURVES REPRESENT SINGLE STAGE PERFORMANCE BASED ON TEST OF MULTI-STAGE BOWL ASSEMBLY. EFFICIENCY CORRECTION APPLIES TO HEAD, FLOW AND HORSEPOWER FOR LESSER STAGES.	



Xylem Inc.
 P.O. Box 5487
 Lubbock, TX 79408
 Tel +1.806.763.7867
 Fax +1.800.453.4749
www.xyleminc.com

Goulds is a registered trademark of Goulds Pumps, Inc. and is used under license.
 © 2018 Xylem Inc. C3600 R3 January 2018